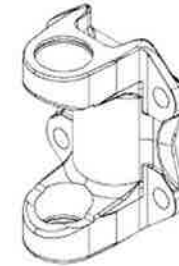


MACHOIRE A BRIDE

Les machoires à bride sont classées par ordre croissant en fonction de la taille du bloc.
(diamètre du roulement x longueur du croisillon)
Puis dans l'ordre suivant DIN - SAE - XS (dentures).

Rubrique 3 - Page 2 à 59

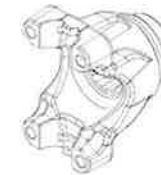


MACHOIRE A PINCE

Rubrique 3 - Page 61 à 67

MACHOIRE END - YOKE

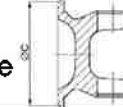
Rubrique 3 - Page 61 à 67



MACHOIRE A BRIDE



SAE
centrage mâle



DIN
centrage femelle

FIG A : FIXATION A CIRCLIPS

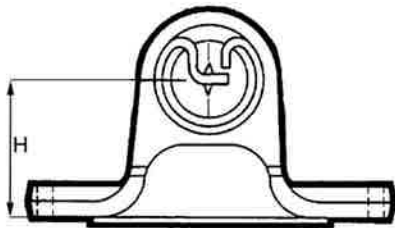


FIG B : FIXATION 2 VIS SPICER

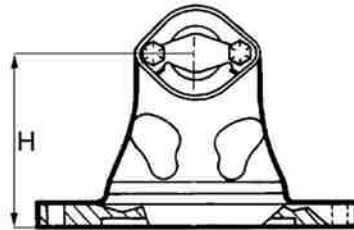


FIG C : FIXATION 2 VIS SPL

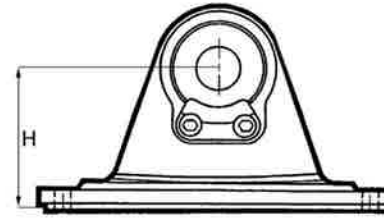


FIG D : FIXATION 3 VIS VOLVO

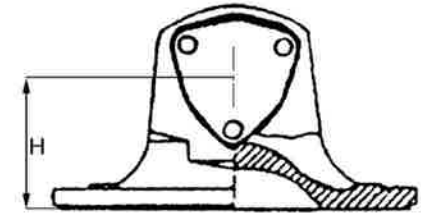


FIG 1 : SAE 4 TROUS

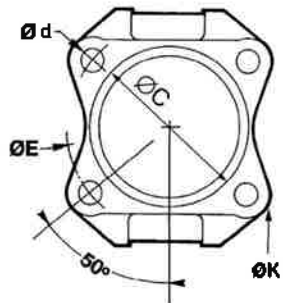


FIG 2 : SAE 6 TROUS
MERCEDES

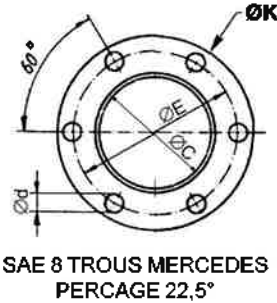


FIG 3 : SAE 8 TROUS

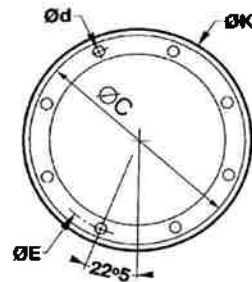


FIG 4 : SAE 12 TROUS

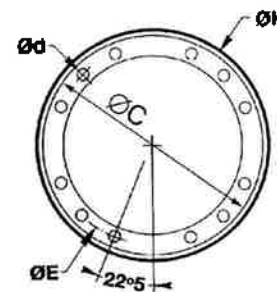


FIG 5 : DIN 4 TROUS

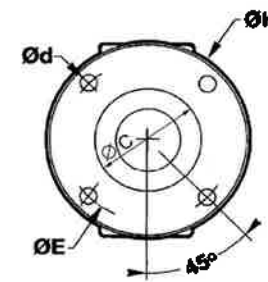


FIG 6 : DIN 6 TROUS

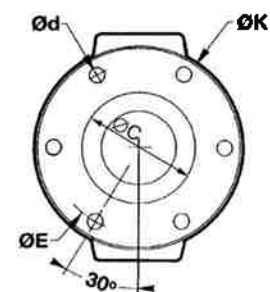


FIG 7 : DIN 8 TROUS

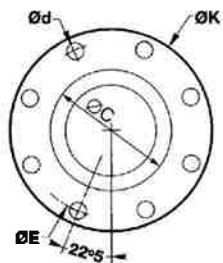


FIG 8 : DIN 10 TROUS

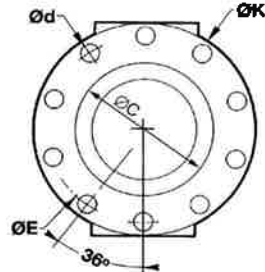


FIG 9 : DIN 10 TROUS
DESAXE

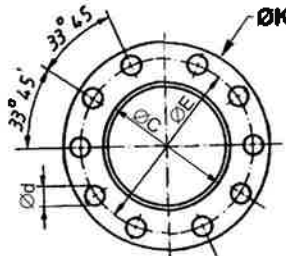


FIG 10 : DENTURE 4
TROUS

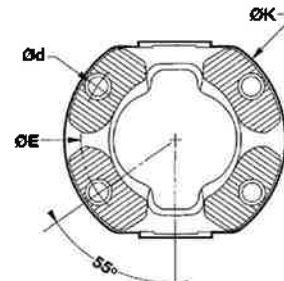


FIG 11 : UNIMOG 4 TROUS

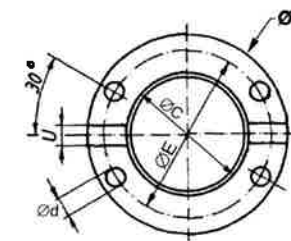
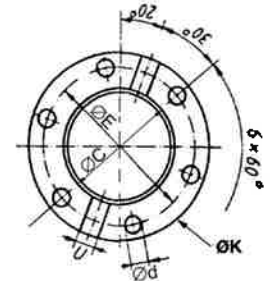


FIG 12 : UNIMOG 6 TROUS

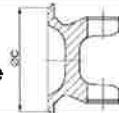


REFERENCE	TYPE	SERIE	BLOC	Ø C	Ø K	Ø E	Nbr trous	Ø d	H	Angle	FIG.	REMARQUE	ORIGINE
2473102000114	DIN	473-10	15 x 40,1	20	50	38	4	6	29		A5		EDS
2473102000000	DIN	473-10	15 x 40,1	30	58	47	4	5	29	30°	A5		EDS
2473102300000	DIN	473-10	15 x 40,1	35	65	52	4	6	29		A5		ELBE
1105300001	DIN	105	17 x 41	30	58	47	4	5	30	30°	A5		ELBE
1105301001	DIN	105	17 x 41	35	65	52	4	6	30	25°	A5		ELBE
1106300001	DIN	106	19 x 48	35	65	52	4	6	32	30°	A5		ELBE
1106300002	DIN	106	19 x 48	35	65	52			32	30°	A5	SANS TROUS	ELBE
1106301001	DIN	106	19 x 48	42	75	62	6	6	32	20°	A6		ELBE
05025845	DIN	500	19 x 52	30	58	47	4	5	40		A5		
SAE12102254	SAE		22 x 54	57,1	100	69,9	4	10,1	55		A1		
1107300001	DIN	107	22 x 58	42	75	62	6	6	36	30°	A6		ELBE
1107300013	DIN	107	22 x 58	42	75	62	4	8,1	36	30°	A5		ELBE
11073000021	DIN	107	22 x 58	42	75	62	4	8,1	36	30°	A	Perçage des trous asymétrique 100°/80°	ELBE
1107301001	DIN	107	22 x 58	47	90	74,5	4	8,1	36	18°	A5		ELBE
1107308001	SAE	107	22 x 58	57,1		69,9	4	7,9	38		A		
2473302000000	DIN	473-30	22 x 59	42	75	62	6	6	39		A6		ELBE
2473302016231	DIN	473-30	22 x 59	42	75	62	4	8,1	39		A5		ELBE
2473302300000	DIN	473-30	22 x 59	47	90	74,5	4	8,1	39		A5		
14021359	DIN	1120	23,8 x 61,2	42	75	62	6	6,1	39		A6		
14021369	DIN	1120	23,8 x 61,2	47	90	74,5	4	8,1	40	20°	A5		
2501142300100	DIN	1110	23,8 x 61,2	47	90	74,5	4	8,1	48	25°	A5		

MACHOIRE A BRIDE



SAE
centrage mâle



DIN
centrage femelle

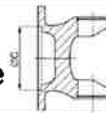


FIG A : FIXATION A CIRCLIPS

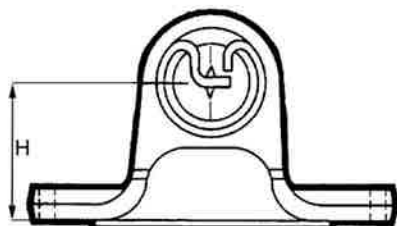


FIG B : FIXATION 2 VIS SPICER

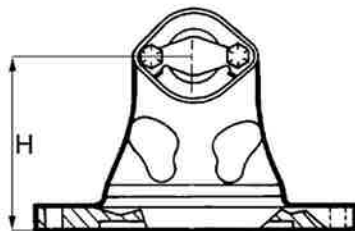


FIG C : FIXATION 2 VIS SPL

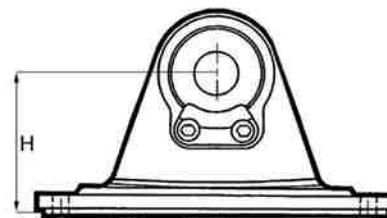


FIG D : FIXATION 3 VIS VOLVO

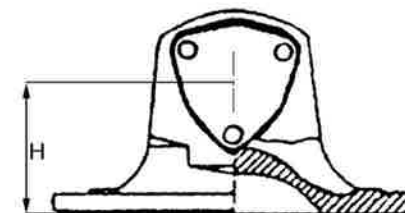


FIG 1 : SAE 4 TROUS

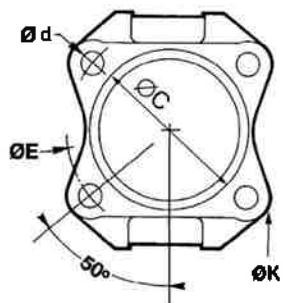


FIG 2 : SAE 6 TROUS
MERCEDES

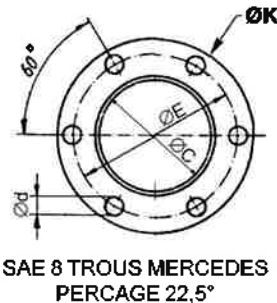


FIG 3 : SAE 8 TROUS

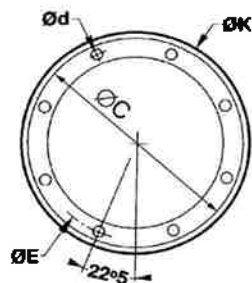


FIG 4 : SAE 12 TROUS

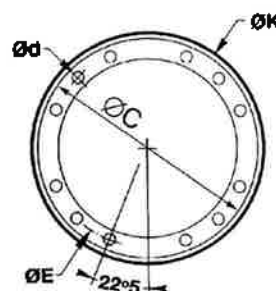


FIG 5 : DIN 4 TROUS

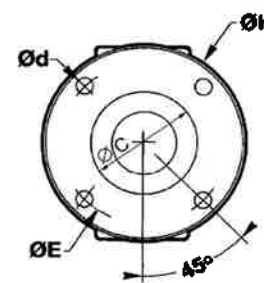


FIG 6 : DIN 6 TROUS

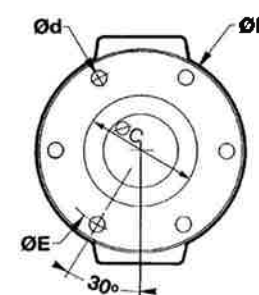


FIG 7 : DIN 8 TROUS

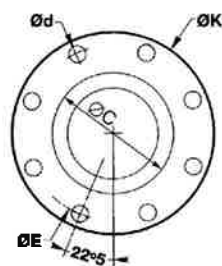


FIG 8 : DIN 10 TROUS

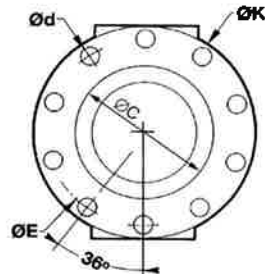


FIG 9 : DIN 10 TROUS
DESAXE

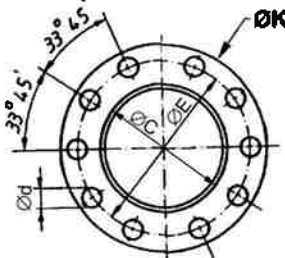


FIG 10 : DENTURE 4
TROUS

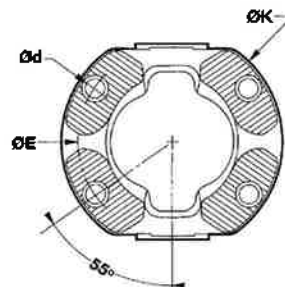


FIG 11 : UNIMOG 4 TROUS

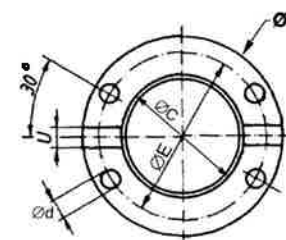
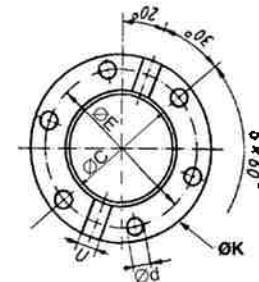


FIG 12 : UNIMOG 6 TROUS

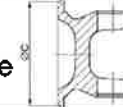


REFERENCE	TYPE	SERIE	BLOC	Ø C	Ø K	Ø E	Nbr trous	Ø d	H	Angle	FIG.	REMARQUE	ORIGINE
11243290	DIN	1110	23,8 x 61,2	47	90	74,5	4	8,1	52	45°	A5	Bride ronde grand angle	
11243106	DIN	1110	23,8 x 61,2	57	100	84	6	8,1	52	45°	A6	Bride ronde grand angle	
11243120	DIN	1110	23,8 x 61,2	75	120	101,5	8	8,1	65	45°	A7	Bride ronde grand angle	
MAB1120DIN120	DIN	1120	23,8 x 61,2	75	120	101,5	8	8,1	40	30°	A7		
14020150001	SAE	1120	23,8 x 61,2	34	68	55,9	4	8,1	40			55 x 25	
1402713	SAE	1120	23,8 x 61,2	45	95	80	4	8,1	40	30°	A	Trous distants 56x56 / trou central de 32 / SUZUKI	
2501142400060	SAE	1120	23,8 x 61,2	46,9		84	4	10,1	31		A	60 x 60 - BMW	
1402NISSAN	SAE	1120	23,8 x 61,2	50		75	4	10,1	30		A	48 x 58 -NISSAN	
MAB1140NISSAN	SAE	1120	23,8 x 61,2	50			4	10,1	40		A	57,5x57,5	
2501142400030	SAE	1120	23,8 x 61,2	56	109		4	10,1	41		A	60 x 67 - Ford	
2501142400020	SAE	1120	23,8 x 61,2	57	92		4	9,8	40	25°	A	49 x 58,8 - Marina	
1402088/8	SAE	1120	23,8 x 61,2	57	92	78	4	8,1	30		A	60 x 50 -NISSAN	
1402088	SAE	1120	23,8 x 61,2	57	92	78	4	10,1	30		A	60 x 50 -NISSAN	
11243390	SAE	1110	23,8 x 61,2	57,1	90	69,9	4	8,1	53	45°	A1	Bride ronde grand angle	
21210	SAE	1120	23,8 x 61,2	57,1	88	69,9	4	8,1	30	20°	A1		
MAB1120SAE1310	SAE	1120	23,8 x 61,2	60,3	100	79,4	4	10,1	35	20°	A		
1402002	SAE	1120	23,8 x 61,2	57,15		74,9	4	10,1	30		A	FREELANDER	
11243100	SAE	1110	23,8 x 61,2	60,3	100	79,4	4	10,1	51,5	45°	A1	Bride ronde grand angle	
170231	SAE		25 x 63,9	45	96	79,2	4	8,1	40		A	56 x 56 / Suzuki Nissan	
170234	SAE		25 x 63,9	45	105	85	4	10,1	40		A	60 x 60 - Nissan	
0015596	DIN	287-00	26 X 69,8	47	90	74,5	6	10,1	40	20°	A6	MERCEDES-BENZ	DANA SPICER GWB

MACHOIRE A BRIDE



SAE
centrage mâle



DIN
centrage femelle

FIG A : FIXATION A CIRCLIPS

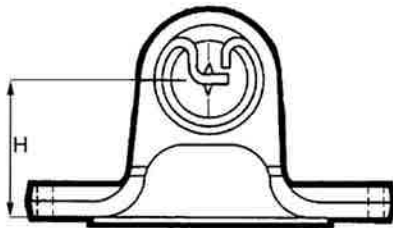


FIG B : FIXATION 2 VIS SPICER

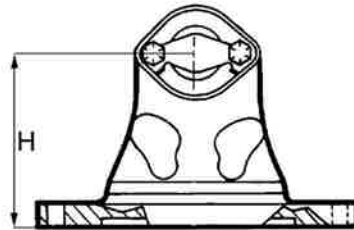


FIG C : FIXATION 2 VIS SPL

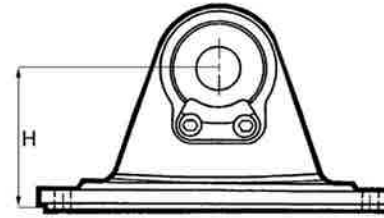


FIG D : FIXATION 3 VIS VOLVO

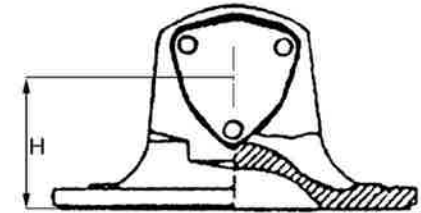


FIG 1 : SAE 4 TROUS

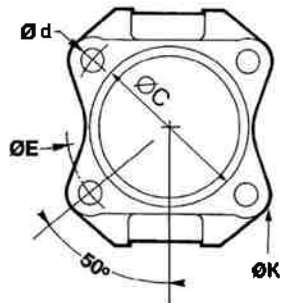


FIG 2 : SAE 6 TROUS
MERCEDES

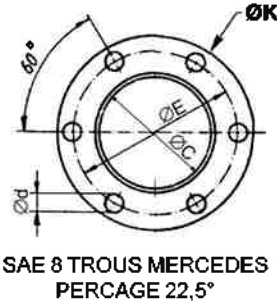


FIG 3 : SAE 8 TROUS



FIG 4 : SAE 12 TROUS

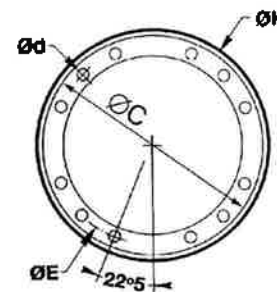


FIG 5 : DIN 4 TROUS

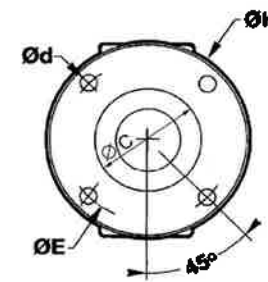


FIG 6 : DIN 6 TROUS

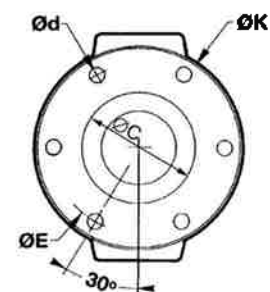


FIG 7 : DIN 8 TROUS

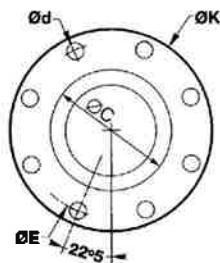


FIG 8 : DIN 10 TROUS

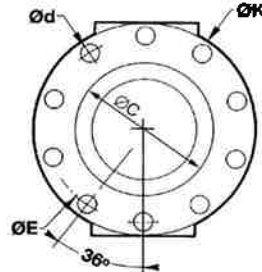


FIG 9 : DIN 10 TROUS
DESAXE

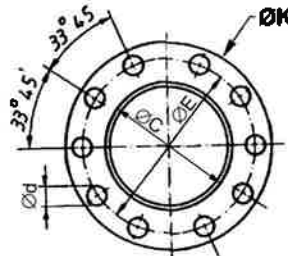


FIG 10 : DENTURE 4
TROUS

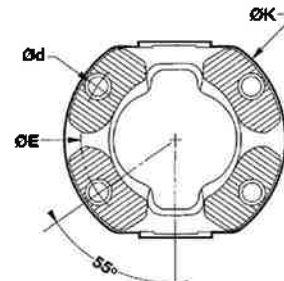


FIG 11 : UNIMOG 4 TROUS

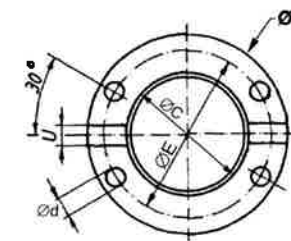
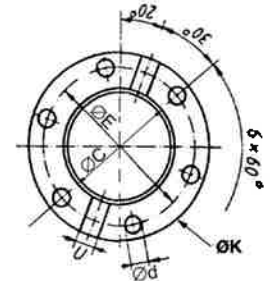


FIG 12 : UNIMOG 6 TROUS

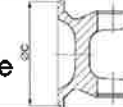


REFERENCE	TYPE	SERIE	BLOC	Ø C	Ø K	Ø E	Nbr trous	Ø d	H	Angle	FIG.	REMARQUE	ORIGINE
0012069	DIN	287-00	26 X 69,8	47	90	74,5	6	8,1	40	20°	A6	MERCEDES-BENZ	DANA SPICER GWB
0015597	DIN	287-00	26 X 69,8	47	90	74,5	6	8,1	48	25°	A6	MERCEDES-BENZ	DANA SPICER GWB
2287002000010	DIN	287-00	26 X 69,8	47	90	74,5	4	8,1	40		A5		
2287002700010	DIN	287-00	26 X 69,8	47	90	74,5	4	8,1	52		A5		
2287002800100	DIN	287-00	26 X 69,8	57	100	84	6	8,1	52		A6		
2287002400060	SAE	287-00	26 X 69,8	57,1		69,9	4	8,2	40		A	SAE1120	
2287002400110	SAE	287-00	26 X 69,8	60,3		79,4	4	10,1	40		A	SAE1310	
21442400610	SAE	287-00	26 X 69,8	74	110	91,9	4	8,2	52	35°	A		
T30202	SAE		26 x 42 IC	45,92		55	4	10,1		20°	A	Clip's intérieur / TOYOTA / Trous distants 64x56	
22879	SAE	1210	27 x 61,9	57,1	88	69,9	4	8,2	30,2	15°	A1		DANA SPICER
22SF08	SAE	1210	27 x 61,9	69,9		95,3	4	12,1			A1	Bride ronde -MANITOU	DANA SPICER
13273290	DIN	1300	27 x 74,5	47	90	74,5	4	8,1	90	45°	A5	Bride ronde grand angle	
13273290B	DIN	1300	27 x 74,5	47	90				90	45°	A5	Bride ronde grand angle - sans trous	
30029048	DIN	1300	27 x 74,5	47	90	74,5	4	8,1	45	30°	A5		
13273106	DIN	1300	27 x 74,5	57	100	84	6	8,1	82	45°	A6	Bride ronde grand angle	
MAB1300NISS	DIN	1300	27 x 74,5	65		108	4	12,1	50		A	NISSAN - 76 x 76	
3002022	SAE	1300	27 x 74,5	40	120	96	4	12,1	45	22°	A	trous distants 83,2x48 / trou central de 17 / FORD	
MAB1300SUZ	SAE	1300	27 x 74,5	45		85	4	10,1	40	22°	A	trous distants 60x60 / Suzuki	
3002135	SAE	1300	27 x 74,5	46		85	4	10,1	40	22°	A	trous distants 60x60 / Toyota	
3002120410	SAE	1300	27 x 74,5	50	120	92	4	10,1	41	20°	A	trous distants 65 x 65 / DAIHATSU	
300212041044	SAE	1300	27 x 74,5	50	120	88	4	10,1	41		A	trous distants 58 x 67 / NISSAN	

MACHOIRE A BRIDE



SAE
centrage mâle



DIN
centrage femelle

FIG A : FIXATION A CIRCLIPS

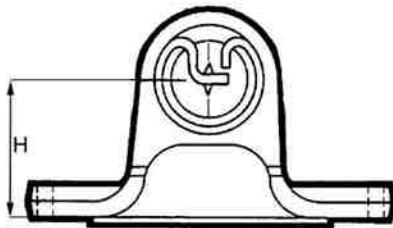


FIG B : FIXATION 2 VIS SPICER

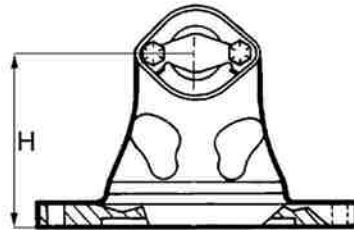


FIG C : FIXATION 2 VIS SPL

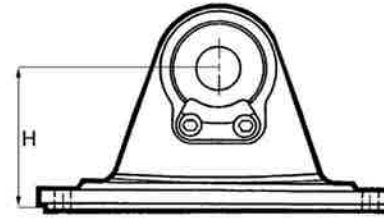


FIG D : FIXATION 3 VIS VOLVO

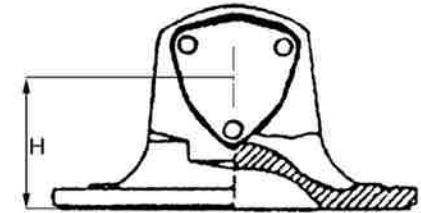


FIG 1 : SAE 4 TROUS

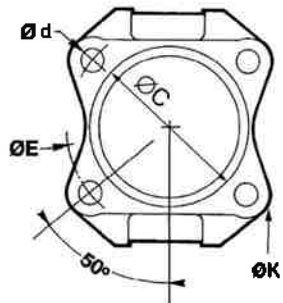


FIG 2 : SAE 6 TROUS
MERCEDES

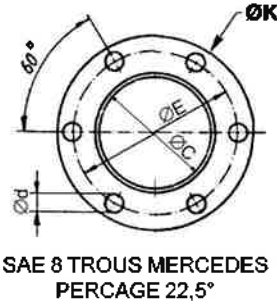


FIG 3 : SAE 8 TROUS



FIG 4 : SAE 12 TROUS

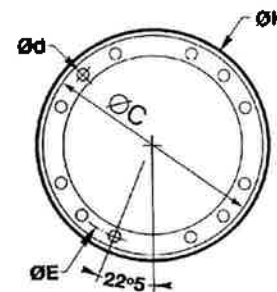


FIG 5 : DIN 4 TROUS

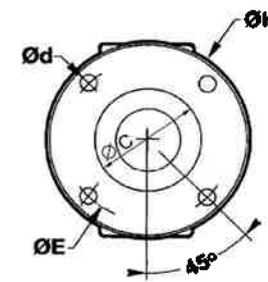


FIG 6 : DIN 6 TROUS

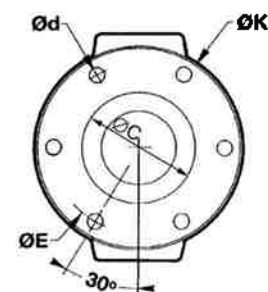


FIG 7 : DIN 8 TROUS

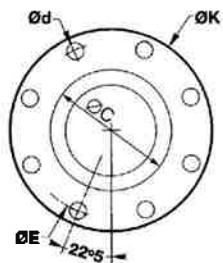


FIG 8 : DIN 10 TROUS

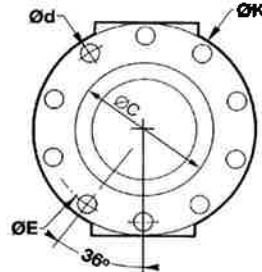


FIG 9 : DIN 10 TROUS
DESAXE

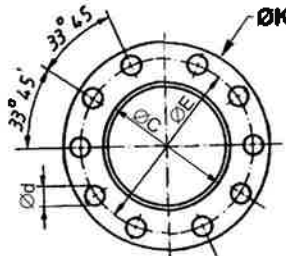


FIG 10 : DENTURE 4
TROUS

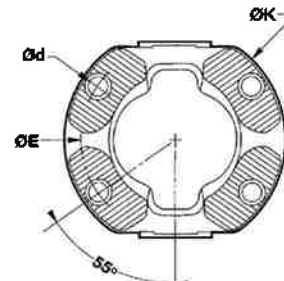


FIG 11 : UNIMOG 4 TROUS

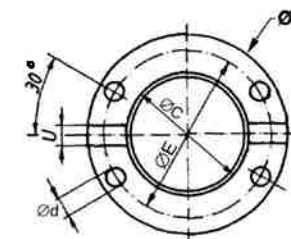
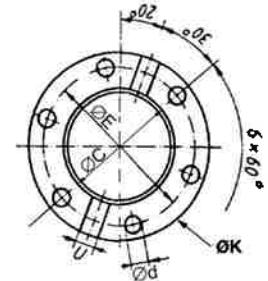


FIG 12 : UNIMOG 6 TROUS

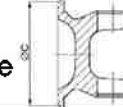


REFERENCE	TYPE	SERIE	BLOC	Ø C	Ø K	Ø E	Nbr trous	Ø d	H	Angle	FIG.	REMARQUE	ORIGINE
3002001	SAE	1300	27 x 74,5	50	101,5	81,25	4	10,1	37	20°	A	trous distants 57 x 57 / NISSAN	
110990456	SAE	1300	27 x 74,5	50	95	75	4	10,1	35		A	trous distants 58 x 48	
3002024	SAE	1300	27 x 74,5	56	120	96	4	12,1	40	22°	A	trous distants 83,2x48 / trou central de 41,5 / FORD	
30021449	SAE	1300	27 x 74,5	56	120	96	4	12,1	65	22°	A	trous distants 83,2x48 / trou central de 41,5 / FORD	
30021409	SAE	1300	27 x 74,5	56	109,5	90	4	10,1	40	22°	A	trous distants 67 x 60 / FORD	
110990457	SAE	1300	27 x 74,5	57	95	78	4	10,1	35		A	trous distants 60 x 50	
110990452	SAE	1300	27 x 74,5	57	95	78	4	8,1	35		A	trous distants 55 x 55	
110990453	SAE	1300	27 x 74,5	57	95	78	4	10,1	35		A	trous distants 55 x 55	
13273390	SAE	1300	27 x 74,5	57,1	90	69,9	4	8,1	61	45°	A1	Bride ronde grand angle SAE1120	
30021439	SAE	1300	27 x 74,5	57,1	88	69,9	4	8,1	47		A1	Bride ronde SAE1120	
3002239	SAE	1300	27 x 74,5	60,3	100	79,4	4	10,1	35	20°	A1	Bride ronde SAE1310	
13273100	SAE	1300	27 x 74,5	60,3	100	79,4	4	10,1	62,5	45°	A1	Bride ronde grand angle SAE1310	
3002099	SAE	1300	27 x 74,5	65	120	95	4	12,1	36		A	67 x 67 - NISSAN	
BOPEL	SAE	1300	27 x 74,5	65		85	4	8,1	40		A1	OPEL - 50 x 68	
11090458	SAE	1300	27 x 74,5	46	92	70	4	10,1	35		A	trous distants 55 x 55	
3002075	SAE	1300	27 x 74,5	57,7	91,8	77,8						TOYOTA	
3002028		1300	27 x 74,5		120					22°	A	Machoire Brut, sans perçage ni centrage	
0018369	DIN	2015	27 x 74,5	47	90	74,5	4	8,1	50	35°	A5		DANA SPICER ICUG
0018371	DIN	2015	27 x 74,5	57	100	84	6	8,1	48	25°	A6		DANA SPICER ICUG
0018370	DIN	2015	27 x 74,5	57	100	84	6	8,1	54	35°	A6		DANA SPICER ICUG
0018373	DIN	2015	27 x 74,5	57	100	84			54	35°	A	SANS TROUS	DANA SPICER ICUG

MACHOIRE A BRIDE



SAE
centrage mâle



DIN
centrage femelle

FIG A : FIXATION A CIRCLIPS

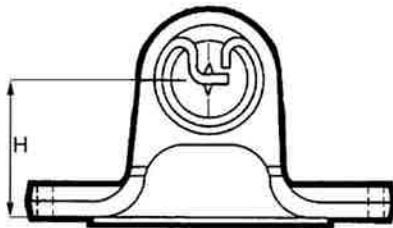


FIG B : FIXATION 2 VIS SPICER

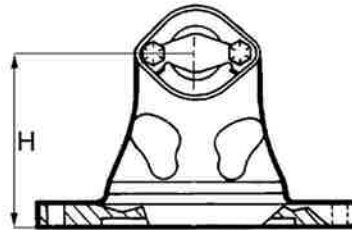


FIG C : FIXATION 2 VIS SPL

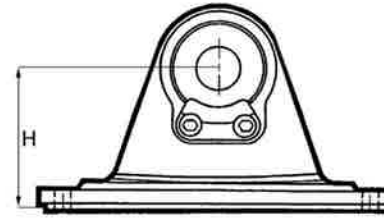


FIG D : FIXATION 3 VIS VOLVO

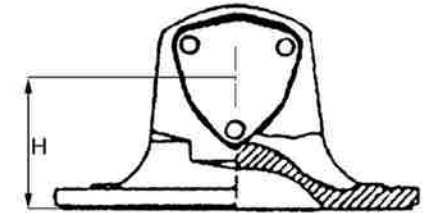


FIG 1 : SAE 4 TROUS

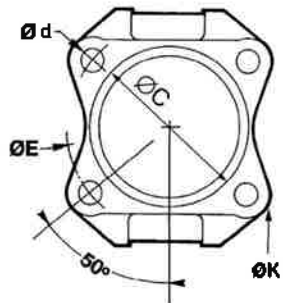


FIG 2 : SAE 6 TROUS
MERCEDES

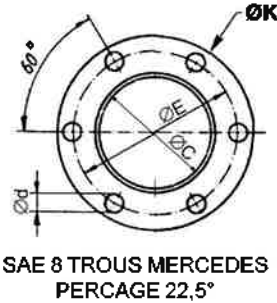


FIG 3 : SAE 8 TROUS

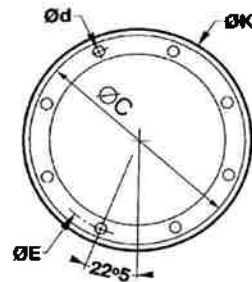


FIG 4 : SAE 12 TROUS

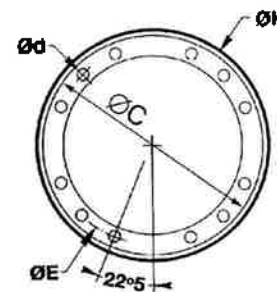


FIG 5 : DIN 4 TROUS

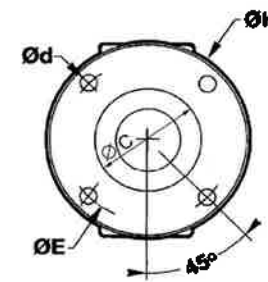


FIG 6 : DIN 6 TROUS

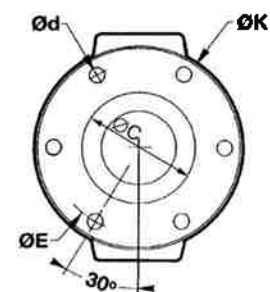


FIG 7 : DIN 8 TROUS

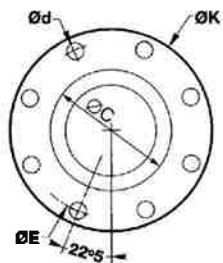


FIG 8 : DIN 10 TROUS

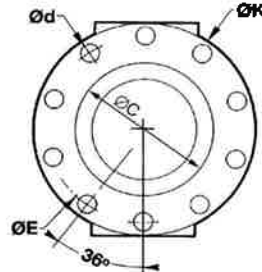


FIG 9 : DIN 10 TROUS
DESAXE

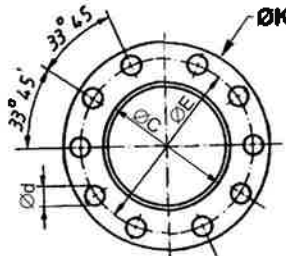


FIG 10 : DENTURE 4
TROUS

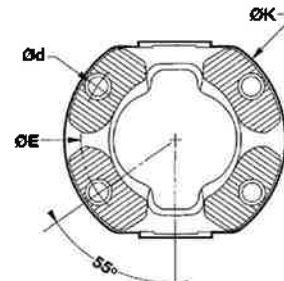


FIG 11 : UNIMOG 4 TROUS

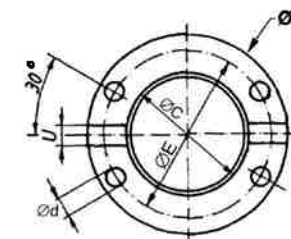
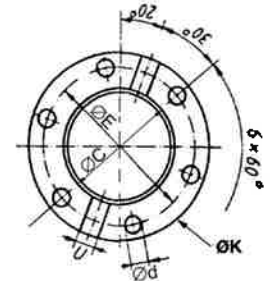


FIG 12 : UNIMOG 6 TROUS

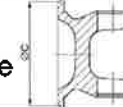


REFERENCE	TYPE	SERIE	BLOC	Ø C	Ø K	Ø E	Nbr trous	Ø d	H	Angle	FIG.	REMARQUE	ORIGINE
0018757	DIN	2015	27 x 74,5	75	120	101,5	8	10,1	43	25°	A7		DANA SPICER ICUG
0018768	DIN	2015	27 x 74,5	75	120	101,5	8	8,1	43	25°	A7		DANA SPICER ICUG
0018767	SAE	2015	27 x 74,5	57,1	88	69,9	4	8,1	43	25°	A1	Bride ronde	DANA SPICER ICUG
0018372	SAE	2015	27 x 74,5	60,3	97	79,4	4	10	43	25°	A1	Bride ronde	DANA SPICER ICUG
0018698	SAE	2015	27 x 74,5	69,9	116	95,3	4	12,1	43	25°	A1	Bride ronde	DANA SPICER ICUG
3687152300000		1410	30,1 x 106,3	75	120	SANS TROUS			43	25°	A	SANS TROUS	
2501312000060	DIN	1310	27 x 81,7	47	90	74,6	4	8,1	40				
221329	DIN	1310	27 x 81,7	47	90	74,6	4	8,1	50	30°	A5		DANA SPICER
31029068	DIN	1310	27 x 81,7	47	90	74,6	6	8,1	50	30°	A6	DB	
3502300	DIN	1310	27 x 81,7	50,8		107,9	4	12,75			A5	FORD - 76 x 76	
3102004	DIN	1310	27 x 81,7	50,8	125	108	8	12,1	56	22°	A7	Pont FORD	
2501312000200	DIN	1310	27 x 81,7	50,8	115	88	4	12,1	48		A1	SSANGYONG / Trous distants 63 x 63	EDS
221339	DIN	1310	27 x 81,7	57	100	84	6	8,1	54	30°	A6	Bride évidée	DANA SPICER
22SF03	DIN	1310	27 x 81,7	57	100	84	6	8,1	50	30°	A6	Bride évidée	DANA SPICER
22SF88	DIN	1310	27 x 81,7	57	100	84	8	8,1	52	20°	A7		DANA SPICER
31025009	DIN	1310	27 x 81,7	57	120	101,7	4	10,1	58	20°	A	VITO - 77,9 x 65,4	DANA SPICER
3102026	DIN	1310	27 x 81,7	65	125	108	4	12,1	55		A	NISSAN - 76 x 76 - existe JC JF 2020 4520037 4520067	
221829	DIN	1310	27 x 81,7	75	120	101,5	8	10,1	52	22°	A7		DANA SPICER
2501312300010	DIN	1310	27 x 81,7	75	120	101,5	8	8,1	52	22°	A7		EDS
2501312800400	DIN	1310	27 x 81,7	79,4	125	108	4	11,5	55		A		
PTOTOY	SAE	1310	27 x 81,7	42		74,6	4	8,1	50	22°	A	TOYOTA / Trous distants 52 x 52	

MACHOIRE A BRIDE



SAE
centrage mâle



DIN
centrage femelle

FIG A : FIXATION A CIRCLIPS

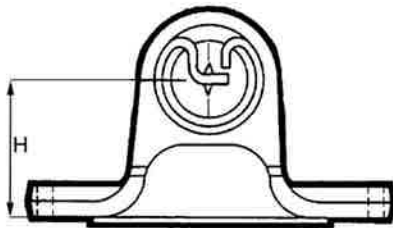


FIG B : FIXATION 2 VIS SPICER

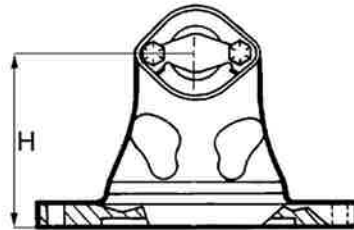


FIG C : FIXATION 2 VIS SPL

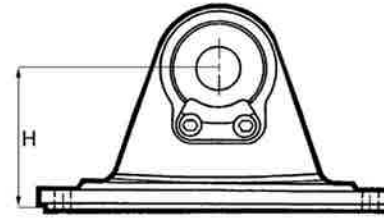


FIG D : FIXATION 3 VIS VOLVO

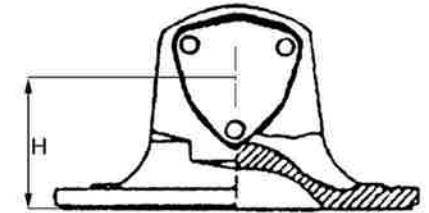


FIG 1 : SAE 4 TROUS

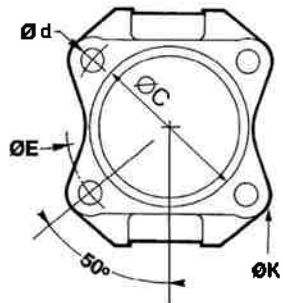


FIG 2 : SAE 6 TROUS
MERCEDES

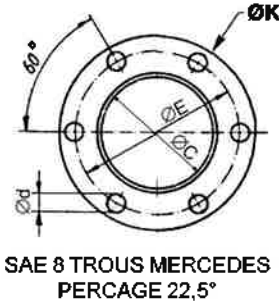


FIG 3 : SAE 8 TROUS



FIG 4 : SAE 12 TROUS

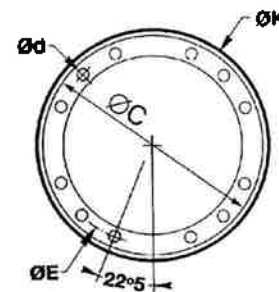


FIG 5 : DIN 4 TROUS

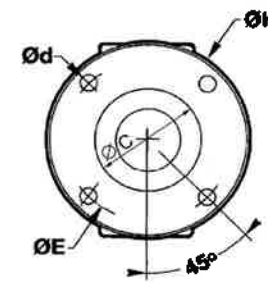


FIG 6 : DIN 6 TROUS

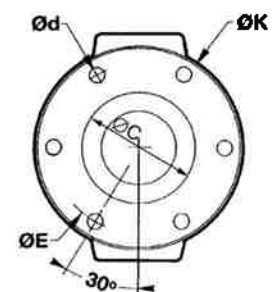


FIG 7 : DIN 8 TROUS

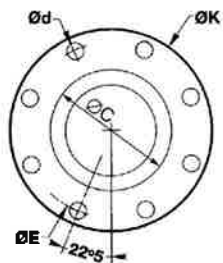


FIG 8 : DIN 10 TROUS

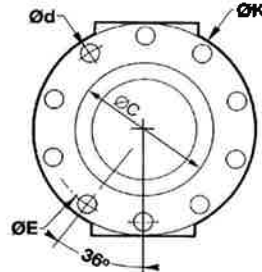


FIG 9 : DIN 10 TROUS
DESAXE

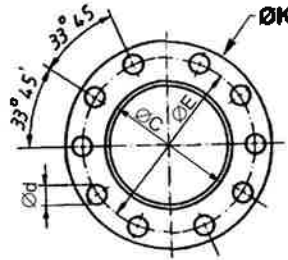


FIG 10 : DENTURE 4
TROUS

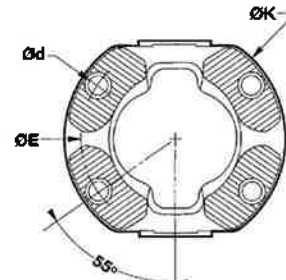


FIG 11 : UNIMOG 4 TROUS

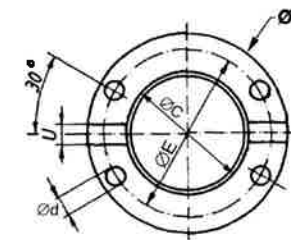
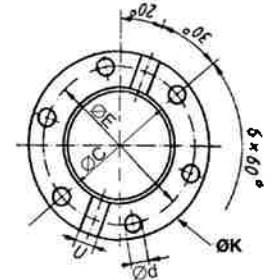


FIG 12 : UNIMOG 6 TROUS

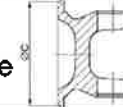


REFERENCE	TYPE	SERIE	BLOC	Ø C	Ø K	Ø E	Nbr trous	Ø d	H	Angle	FIG.	REMARQUE	ORIGINE
3102022	SAE	1310	27 x 81,7	40	120		4					Ford - 48 x 83,2	
2501312445200	SAE	1310	27 x 81,7	45			4	10,1	43		A	MITSUBISHI - 60 x 60	
MAB1310SAE46R	SAE	1310	27 x 81,7	46		84,8	4	8,1	43		A	56 x 64	
2501312446105	SAE	1310	27 x 81,7	46	106	85	4	10,1	42		A	TOYOTA - 60 x 60	
3102002	SAE	1310	27 x 81,7	50	100	81	4	10,1	54	22°	A	PATROL / Trous distants 57 x 57	
3102120410	SAE	1310	27 x 81,7	50	120		4	10,1	41		A	Trous distants 65 x 65	
GBSKU00002H	SAE	1310	27 x 81,7	54	94	78	6	6,6	50		A	4 trous+ 2 trous - 50°-50°-80°-50°-50°-80°	
3102024	SAE	1310	27 x 81,7	56	120		4					Ford - 48 x 83,2	
2501312400010	SAE	1310	27 x 81,7	57	95	78	4	8,1	35		A	Trous distants 58 x 49	
2501312400080	SAE	1310	27 x 81,7	57,1		69,9	4	8,2	40		A1	SAE1120 - Bride ronde	
2501312400100	SAE	1310	27 x 81,7	57,1		69,9	4	8,2	50		A1	SAE1120 - Bride ronde	
2501312460100	SAE	1310	27 x 81,7	60		90	4	10,1	45		A	MITSUBISI - 58x69	
3102019	SAE	1310	27 x 81,7	60		90	4	10,1	54		A	KIA - 63,5 x 63,5	
2501312400140	SAE	1310	27 x 81,7	60,3	98,5	79,4	4	10,2	41,3	30°	A1	équiv. 2 - 2 - 459 avec Ø d = 9,76	
3102459	SAE	1310	27 x 81,7	60,3	98,5	79,4	4	9,3	41,3	30°	A1	équiv. 2 - 2 - 459 avec Ø d = 9,76	
22SF01	SAE	1310	27 x 81,7	60,3	98,5	79,4	4	10,2	41,3	30°	A1	Bride évidée	DANA SPICER
221469	SAE	1310	27 x 81,7	60,3	98,5	79,4	4	10,2	35	20°	A1	2 - 2 - 329 avec Ø d = 9,76	DANA SPICER
3102001	SAE	1310	27 x 81,7	65	121	95	4	12,1	43	22°	A	PATROL / Trous distants 67 x 67	
2501312465200	SAE	1310	27 x 81,7	65	118	95	4	10,1	50		A	SSANGYONG / Trous distants 67 x 67	
BOPEL1310	SAE	1310	27 x 81,7	65		85	4	8,1	40		A1	OPEL - 50 x 68	
2301312465300	SAE	1310	27 x 81,7	65		85	4	10,1	45		A1	SSANGYONG - 50 x 69	

MACHOIRE A BRIDE



SAE
centrage mâle



DIN
centrage femelle

FIG A : FIXATION A CIRCLIPS

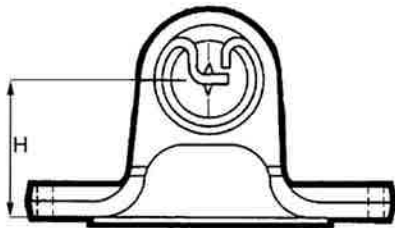


FIG B : FIXATION 2 VIS SPICER

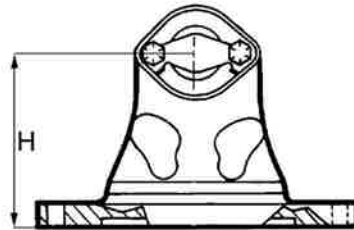


FIG C : FIXATION 2 VIS SPL

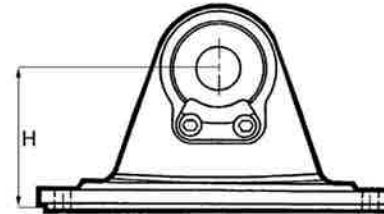


FIG D : FIXATION 3 VIS VOLVO

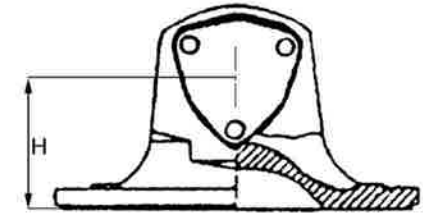


FIG 1 : SAE 4 TROUS

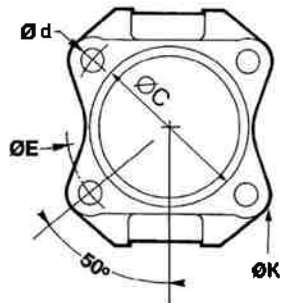


FIG 2 : SAE 6 TROUS
MERCEDES

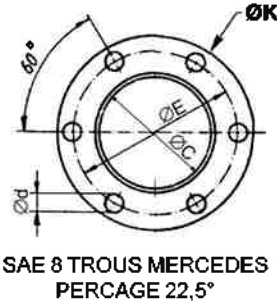


FIG 3 : SAE 8 TROUS



FIG 4 : SAE 12 TROUS

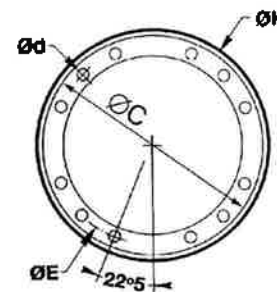


FIG 5 : DIN 4 TROUS

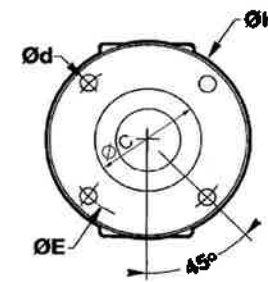


FIG 6 : DIN 6 TROUS

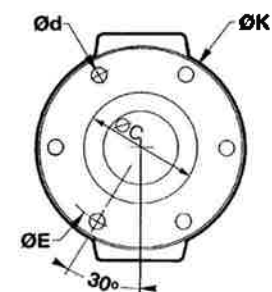


FIG 7 : DIN 8 TROUS

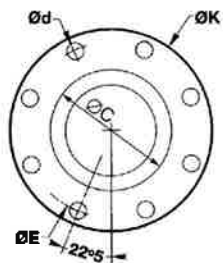


FIG 8 : DIN 10 TROUS

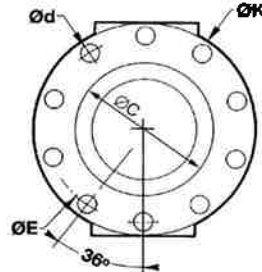


FIG 9 : DIN 10 TROUS
DESAXE

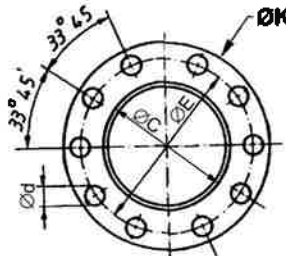


FIG 10 : DENTURE 4
TROUS

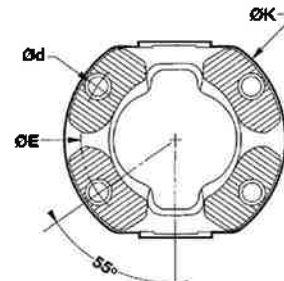


FIG 11 : UNIMOG 4 TROUS

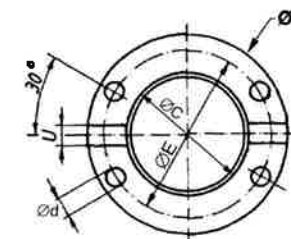
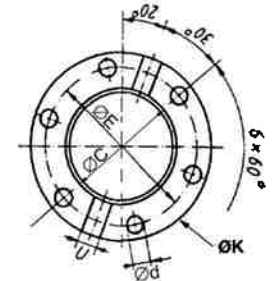


FIG 12 : UNIMOG 6 TROUS

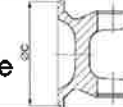


REFERENCE	TYPE	SERIE	BLOC	Ø C	Ø K	Ø E	Nbr trous	Ø d	H	Angle	FIG.	REMARQUE	ORIGINE
2501312465110	SAE	1310	27 x 81,7	65	105	85	4	10,1	41,4		A1	ISUZU - Bride ronde - 69 x 50	EDS
2501312465120	SAE	1310	27 x 81,7	65	105	85	4	8,1	41,4		A1	ISUZU - Bride ronde - 69 x 50	EDS
221459	SAE	1310	27 x 81,7	69,9	118	95,3	4	12,1	35	20°	A1	cent 1410 - 2 - 2 - 479 Ø d = 11,1	DANA SPICER
25013124000050	SAE	1310	27 x 81,7	95,2	146	120,7	4	12,7	36			SAE1500	EDS
3131020540015		1310	27 x 81,7		125,4				56,5	22°	A	Machoire Brut, sans perçage ni centrage	
110990477		1310	27 x 81,7		101,5	82,5	4	9,6	46		A	63 x 53 - sans centrage	
110990472		1310	27 x 81,7		92	73	4	9,6	35		A	47 x 56 - sans centrage	
25013320000949	DIN	1330	27 x 92	50,8		89	4	12,1	42		A	FORD - 63x63 - trou central de 24	
3302003	DIN	1330	27 x 92	65		107,95	4	12,7	41,3		A	FORD - 76,3x76,3	
33021369	DIN	1330	27 x 92	50,8	137	107,5	4	13	43		A	MITSUBISHI - 76 x 76	
5001904	SAE	1330	27 x 92	46			4	11	42		A	TOYOTA - 66 x 66	
33021310	SAE	1330	27 x 92	60,3		79,4	4	10,2	40		A1		EDS
110990609	SAE		27 x 54 IC	45		89	4	8,5	40		A	Trous distants 63 x 63	
1109300201	DIN	109	28,5 x 70,9	47	90	74,5	4	8	42	20°	A5	ou voir chapitre 10 Joint Fixe	ELBE
1109301201	DIN	109	28,5 x 70,9	57	100	84	6	8	42	20°	A6	ou voir chapitre 10 Joint Fixe	ELBE
11093080201	SAE	109	28,5 x 70,9	60,3	96,8	79,4	4	10,1	42	18°	A1	Bride ronde	ELBE
3R0221	DIN	3R	28,6 x 65IC	79,4	108		4	11,4	42,8			CHEVROLET ou 2501312800400 en 1310	
T10201	SAE		29 x 49 IC	45,92	105	84,84	4	10,1	46	20°	A1	Clip's intérieurs / TOYOTA / Trous distants 60 x 60	
T10202	SAE		29 x 49 IC	45,92	105	84,84	4	10,1	46	20°	A1	Clip's intérieurs / TOYOTA / trous distants 64 x 56	
111944100000	DIN	287 - 10	30 x 81,8	47	90	74,5	4	8	48	25°	A5		
111944010000	DIN	287 - 10	30 x 81,8	47	90	74,5	4	8	58	35°	A5	Trou central Ø 40	

MACHOIRE A BRIDE



SAE
centrage mâle



DIN
centrage femelle

FIG A : FIXATION A CIRCLIPS

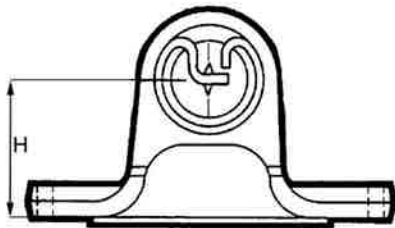


FIG B : FIXATION 2 VIS SPICER

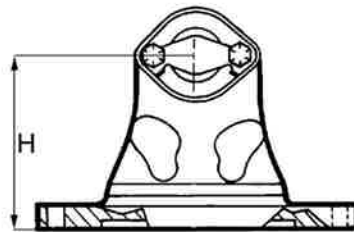


FIG C : FIXATION 2 VIS SPL

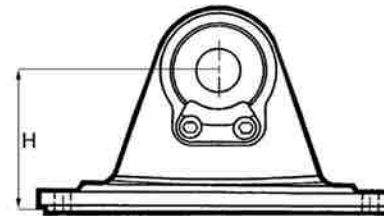


FIG D : FIXATION 3 VIS VOLVO

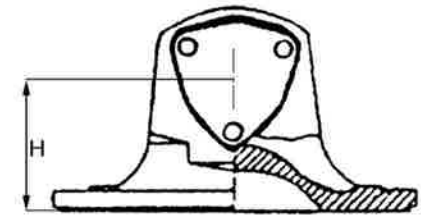


FIG 1 : SAE 4 TROUS

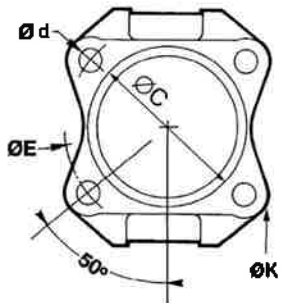


FIG 2 : SAE 6 TROUS
MERCEDES

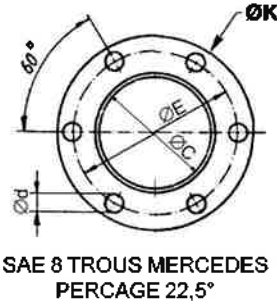


FIG 3 : SAE 8 TROUS



FIG 4 : SAE 12 TROUS

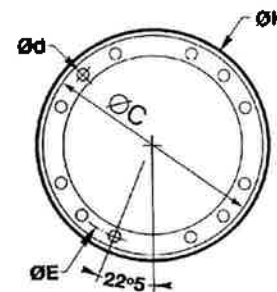


FIG 5 : DIN 4 TROUS

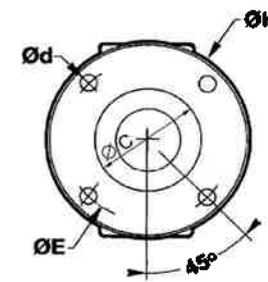


FIG 6 : DIN 6 TROUS

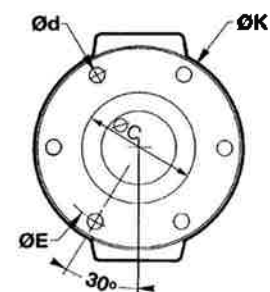


FIG 7 : DIN 8 TROUS

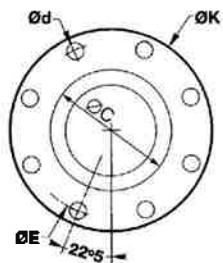


FIG 8 : DIN 10 TROUS

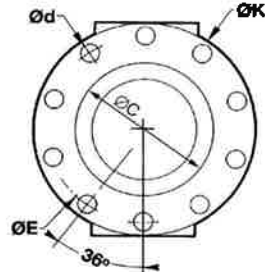


FIG 9 : DIN 10 TROUS
DESAXE

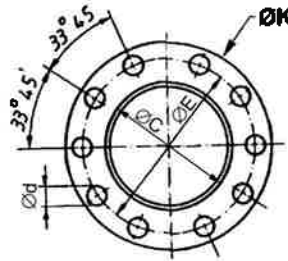


FIG 10 : DENTURE 4
TROUS

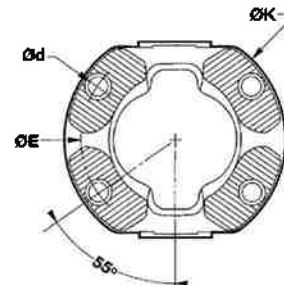


FIG 11 : UNIMOG 4 TROUS

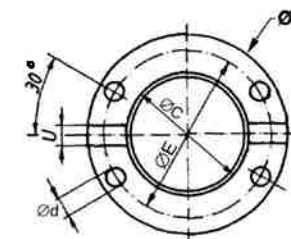
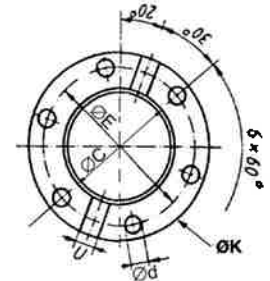


FIG 12 : UNIMOG 6 TROUS

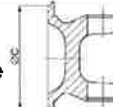


REFERENCE	TYPE	SERIE	BLOC	Ø C	Ø K	Ø E	Nbr trous	Ø d	H	Angle	FIG.	REMARQUE	ORIGINE
111944300000	DIN	287 - 10	30 x 81,8	47	90	74,5	6	8	47	25°	A5	DB - 28710DBDIN90DB en trou de 10	
111044010000	DIN	287 - 10	30 x 81,8	57	100	84	6	8	46	25°	A6	Trou central Ø 40	
111044010000H48	DIN	287 - 10	30 x 81,8	57	100	84	6	8	48	25°	A6	Trou central Ø 40	
111144010000	DIN	287 - 10	30 x 81,8	57	100	84	6	8	58	35°	A6	Trou central Ø 40	
0010676	DIN	287 - 10	30 x 81,8	57	100	84	8	8	48	17°	A7	MERCEDES	
11114461000	DIN	287 - 10	30 x 81,8	57	100	84	8	8	58	35°	A7	MERCEDES	
328710200000	DIN	287 - 10	30 x 81,8	57	100	SANS			48	25°	A	SANS TROUS	
328710270000	DIN	287 - 10	30 x 81,8	57	100	SANS			58	35°	A	SANS TROUS	
111944310000	DIN	287 - 10	30 x 81,8	57	120	101,5	4	8	48		A5	MERCEDES SPRINTER	
21782300400	DIN	287 - 10	30 x 81,8	67	135	112	4	10	46	18°	A	MERCEDES SPRINTER NCV3	
21782300410	DIN	287 - 10	30 x 81,8	67	142	120	4	12,5	46		A5	MERCEDES SPRINTER EURO 5	
111944250000	DIN	287 - 10	30 x 81,8	75	120	101,5	8	8	48	25°	A7		
2287102800200	DIN	287 - 10	30 x 81,8	75	120	101,5	8	8	58	35°	A7		EDS
111944240000	DIN	287 - 10	30 x 81,8	75	120	101,5	8	10,1	48	25°	A7		
111944330000	DIN	287 - 10	30 x 81,8	75	120	101,5	8	10,1	58	35°	A7		
3287102300010	DIN	287 - 10	30 x 81,8	75	120	SANS			48	18°	A	SANS TROUS	
21782800030	DIN	287 - 10	30 x 81,8	75	120	SANS			60		A	SANS TROUS	
2287102400165	SAE	287 - 10	30 x 81,8	57,1	88	69,9	4	8,1	48	25°	A1	Bride ronde - SAE1210	
21782400300	SAE	287 - 10	30 x 81,8	57,1	88	69,9	4	8,1	58	35°	A1	Bride ronde - SAE1210	
111144110000	SAE	287 - 10	30 x 81,8	60,3	96,8	79,4	4	10,1	48	25°	A1	Bride ronde - SAE1310	
11114419000	SAE	287 - 10	30 x 81,8	60,3	96,8	79,4	4	10,1	58	35°	A1	Bride ronde - SAE1310	

MACHOIRE A BRIDE



SAE
centrage mâle



DIN
centrage femelle

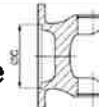


FIG A : FIXATION A CIRCLIPS

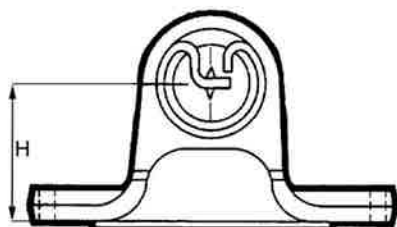


FIG B : FIXATION 2 VIS SPICER

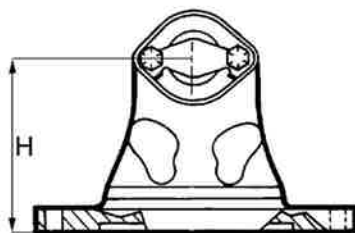


FIG C : FIXATION 2 VIS SPL

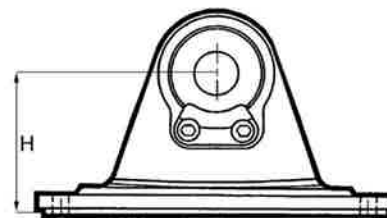


FIG D : FIXATION 3 VIS VOLVO

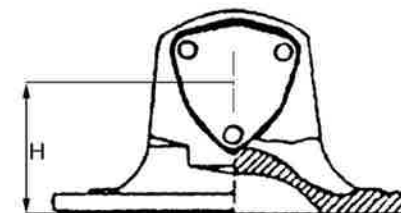


FIG 1 : SAE 4 TROUS

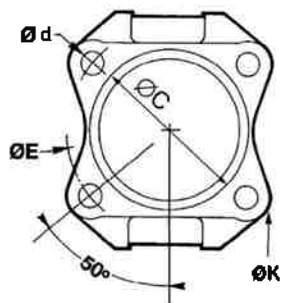


FIG 2 : SAE 6 TROUS
MERCEDES

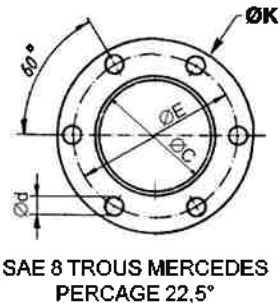


FIG 3 : SAE 8 TROUS

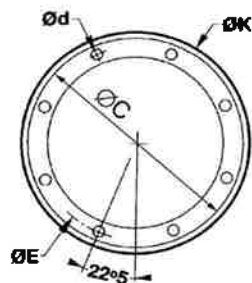


FIG 4 : SAE 12 TROUS

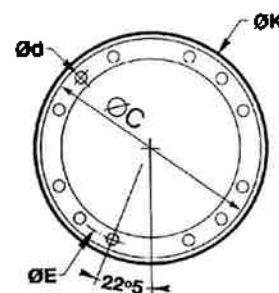


FIG 5 : DIN 4 TROUS

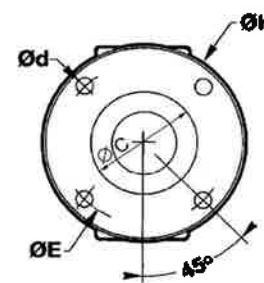


FIG 6 : DIN 6 TROUS

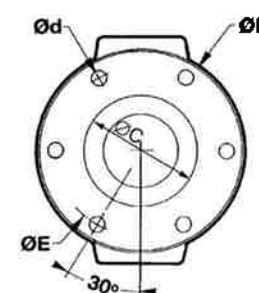


FIG 7 : DIN 8 TROUS

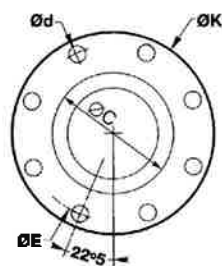


FIG 8 : DIN 10 TROUS

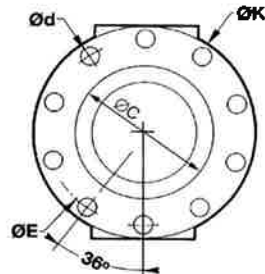


FIG 9 : DIN 10 TROUS
DESAXE

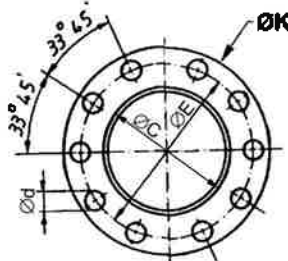


FIG 10 : DENTURE 4
TROUS

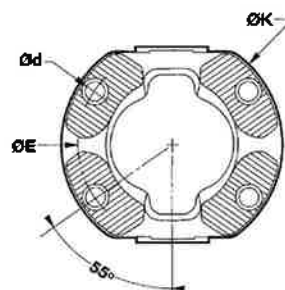


FIG 11 : UNIMOG 4 TROUS

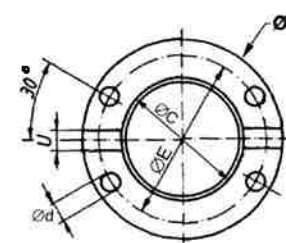
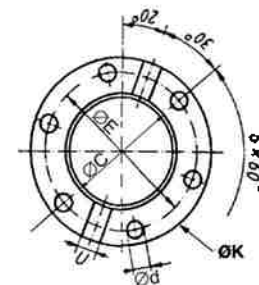


FIG 12 : UNIMOG 6 TROUS

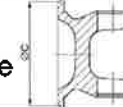


REFERENCE	TYPE	SERIE	BLOC	Ø C	Ø K	Ø E	Nbr trous	Ø d	H	Angle	FIG.	REMARQUE	ORIGINE
11194412000	SAE	287 - 10	30 x 81,8	69,85	115,9	95,25	4	12,1	48	25°	A1	Bride ronde - SAE1410	
11194437000	SAE	287 - 10	30 x 81,8	69,85	115,9	95,25	4	12,1	58	35°	A1	Bride ronde - SAE1410	
2287102470100	SAE	287 - 10	30 x 81,8	70	117	101,2	4	12,1	48		A	MERLOT - 72X72 - + 2 trous	
2287102300050	SAE	287 - 10	30 x 81,8	72	116	98	4	12,1	48	25°	A	JOHN DEERE - 69x69	
287102000500	XS	43	30 x 82,4	-	100	84	4	8,1	58	35°	A10		
1110300001	DIN	110	30 x 83	57	100	84	6	8	46	20°	A6		ELBE
1110305001	DIN	110	30 x 83	57	100	84	6	8	58	35°	A6		ELBE
1110301001	DIN	110	30 x 83	75	120	101,5	8	8,1	46	18°	A7		ELBE
1110301003	DIN	110	30 x 83	75	120	101,5	8	10,1	46	18°	A7		ELBE
1110306011	DIN	110	30 x 83	75	120	101,5	8	10,1	58		A7		ELBE
110990437	DIN	110	30 x 83	75	120	101,5			58		A	SANS TROUS	
1110308002	SAE	110	30 x 83	60,3		79,4	4	10,1	46		A	SAE1310	ELBE
1110308001	SAE	110	30 x 83	69,9		79,4	4	11,1	48		A	SAE1410	ELBE
3502300	DIN	1350	30,1 x 92	50,8		107,95	4	12,7			A5	FORD - 76 x 76	
350210068	DIN	1350	30,1 x 92	57	100	84	6	8,1	65	20°	A6		
21812400100	DIN	1350	30,1 x 92	67	135	112	4	10,1	45	18°	A	72x87-SPRINTER Nouveau model-NCV3	
2004D5SC	DIN	1350	30,1 x 92	75	120	101,5	8	10,1	55	20°	A7		
3502301	SAE	1350	30,1 x 92	50,8		107,95	4	12,7			A5	FORD - Trou central de 17	
20043SC	SAE	1350	30,1 x 92	60,3	98	79,4	4	10,1	56	20°	A1	centrage 1310	
321339	SAE	1350	30,1 x 92	69,9	119	95,3	4	12,1	39,6	20°	A1	centrage 1410 - Ex : 02-447	DANA SPICER
32119	SAE	1350	30,1 x 92	69,9	119	95,3	4	11,1	39,6	20°	A1	centrage 1410	DANA SPICER

MACHOIRE A BRIDE



SAE
centrage mâle



DIN
centrage femelle

FIG A : FIXATION A CIRCLIPS

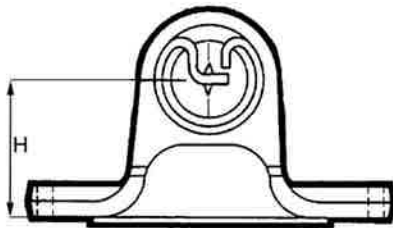


FIG B : FIXATION 2 VIS SPICER

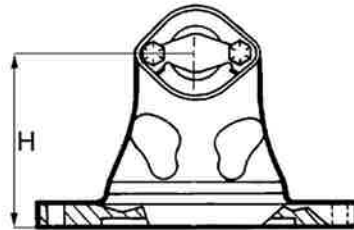


FIG C : FIXATION 2 VIS SPL

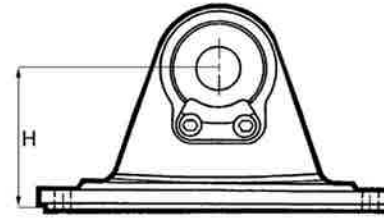


FIG D : FIXATION 3 VIS VOLVO

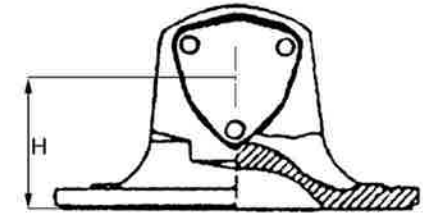


FIG 1 : SAE 4 TROUS

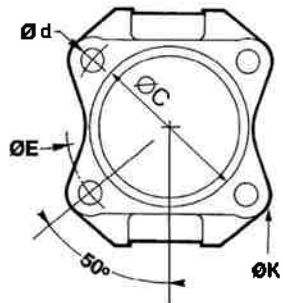


FIG 2 : SAE 6 TROUS
MERCEDES

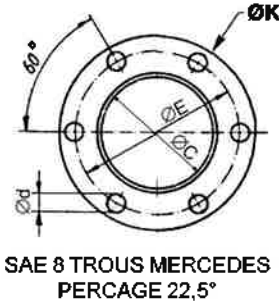


FIG 3 : SAE 8 TROUS



FIG 4 : SAE 12 TROUS

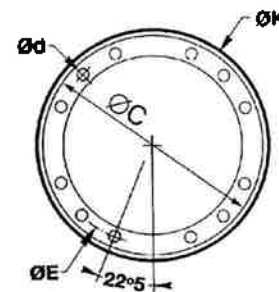


FIG 5 : DIN 4 TROUS

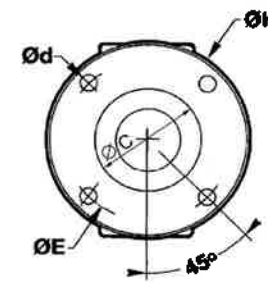


FIG 6 : DIN 6 TROUS

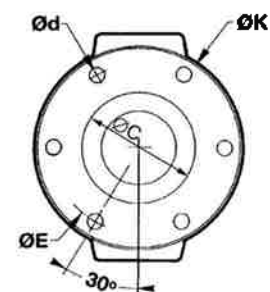


FIG 7 : DIN 8 TROUS

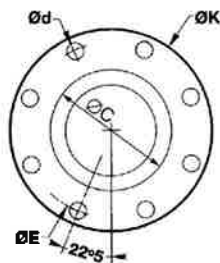


FIG 8 : DIN 10 TROUS

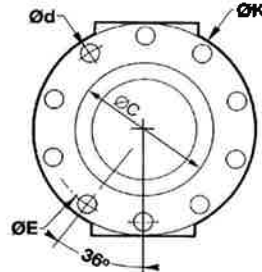


FIG 9 : DIN 10 TROUS
DESAXE

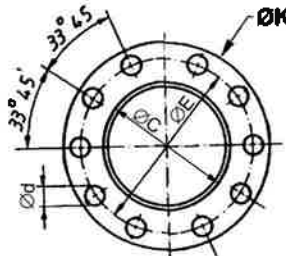


FIG 10 : DENTURE 4
TROUS

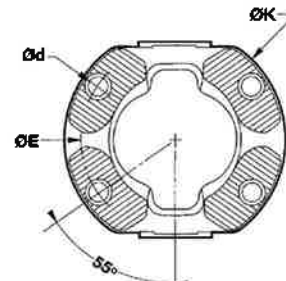


FIG 11 : UNIMOG 4 TROUS

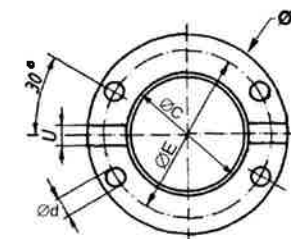
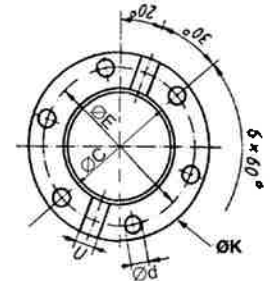


FIG 12 : UNIMOG 6 TROUS

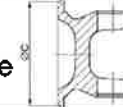


REFERENCE	TYPE	SERIE	BLOC	Ø C	Ø K	Ø E	Nbr trous	Ø d	H	Angle	FIG.	REMARQUE	ORIGINE
2004A2SC	SAE	1350	30,1 x 92	69,9	116	95,3	4	12,1	70	45°	A1	centrage 1410	
32SF03	DIN	1410	30,1 x 106,3	57	100	84	8	8	64	22°	A7		DANA SPICER
321239	DIN	1410	30,1 x 106,3	57	100	84	6	8,1	64	22°	A6		DANA SPICER
2501412065100	DIN	1410	30,1 x 106,3	65	140	108	4	12,1	57		A	NISSAN-76x76	
2426	DIN	1410	30,1 x 106,3	75	120	101,5	8	8,1	64	22°	A7		DANA SPICER
410212088	DIN	1410	30,1 x 106,3	75	120	101,5	8	8,1	55		A7		
321159	DIN	1410	30,1 x 106,3	75	120	101,5	8	10,1	64	22°	A7		DANA SPICER
4102120810	DIN	1410	30,1 x 106,3	75	120	101,5	8	10,1	55		A7		
4102120	DIN	1410	30,1 x 106,3	75	120				55		A	SANS TROUS	
2501412800000	DIN	1410	30,1 x 106,3	90	150	130	8	10,1	74	30°	A7		
MAB1410ZF	SAE	1410	30,1 x 106,3	63,5	100	82,5	4	10,1	55		A	ZF	
321329	SAE	1410	30,1 x 106,3	69,9	119	95,3	4	12,1	42,9	22°	A1	3 - 2 - 159 avec Ø d = 11,1	DANA SPICER
32439A	SAE	1410	30,1 x 106,3	69,9	119	95,3	4	12,1	49,1	30°	A1	3 - 2 - 439 avec Ø d = 11,1	DANA SPICER
41023700	SAE	1410	30,1 x 106,3	70		100	4	12,1	55	22°	A	MITSUBISHI / trous distants 76 x 64	
41023900	SAE	1410	30,1 x 106,3	80		100	4	12,1	55	22°	A	ISUZU / trous distants 81 x 58,7	
321489	SAE	1410	30,1 x 106,3	95,2	150	120,7	4	14,1	38,1	12°	A1	cent 1550 - 3 - 2 - 559 Ø d = 12,7	DANA SPICER
32429	SAE	1410	30,1 x 106,3	95,2		120,7	4	12,7	50,8	30°	A	SAE1550	EDS
03/02/2025	XS	1410	30,1 x 106,3	-	120	100	4	11	57	22°	A10		DANA SPICER
4102150		1410	30,1 x 106,3		150	SANS TROUS			74	25°	A	SANS TROUS	
MAB2020DIN90	DIN	2020	30,2 x 81,8	47	90	74,6	4	8,1	58	35°	A5		
0018699	DIN	2020	30,2 x 81,8	57	100	84	6	8,1	54	25°	A6		DANA SPICER ICUG

MACHOIRE A BRIDE



SAE
centrage mâle



DIN
centrage femelle

FIG A : FIXATION A CIRCLIPS

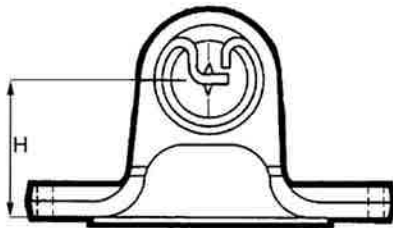


FIG B : FIXATION 2 VIS SPICER

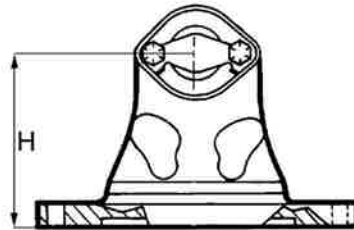


FIG C : FIXATION 2 VIS SPL

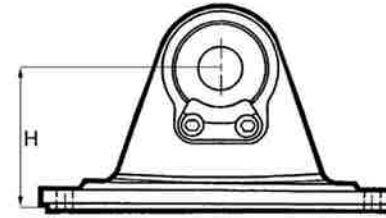


FIG D : FIXATION 3 VIS VOLVO

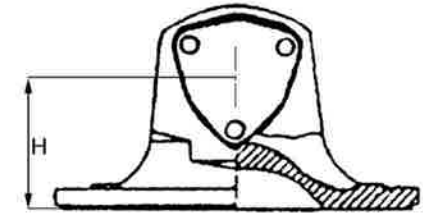


FIG 1 : SAE 4 TROUS

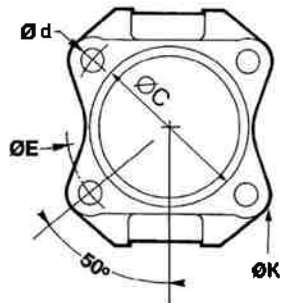


FIG 2 : SAE 6 TROUS
MERCEDES

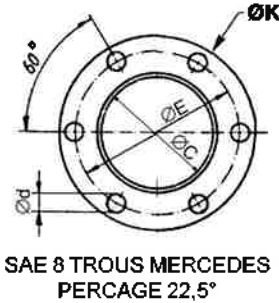


FIG 3 : SAE 8 TROUS



FIG 4 : SAE 12 TROUS

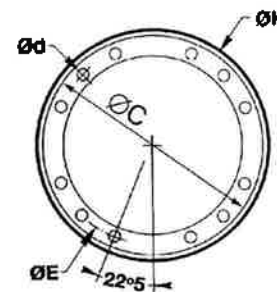


FIG 5 : DIN 4 TROUS

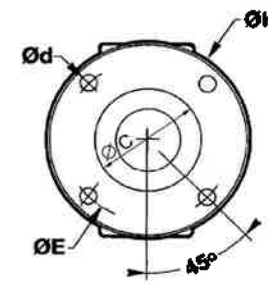


FIG 6 : DIN 6 TROUS

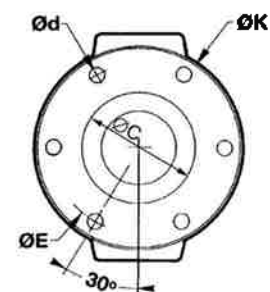


FIG 7 : DIN 8 TROUS

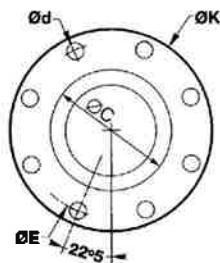


FIG 8 : DIN 10 TROUS

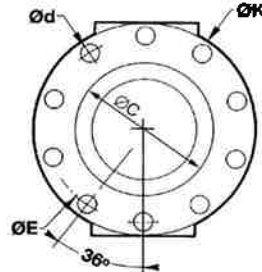


FIG 9 : DIN 10 TROUS
DESAXE

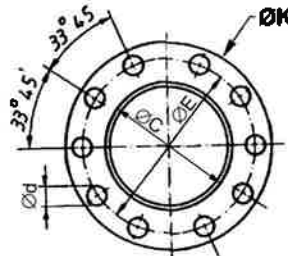


FIG 10 : DENTURE 4
TROUS

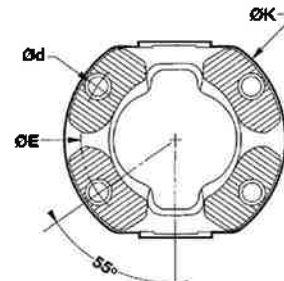


FIG 11 : UNIMOG 4 TROUS

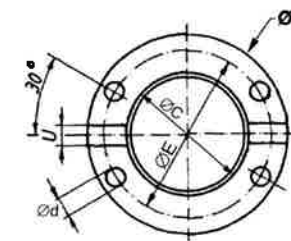
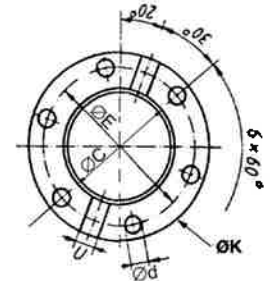


FIG 12 : UNIMOG 6 TROUS

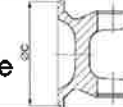


REFERENCE	TYPE	SERIE	BLOC	Ø C	Ø K	Ø E	Nbr trous	Ø d	H	Angle	FIG.	REMARQUE	ORIGINE
20200210068	DIN	2020	30,2 x 81,8	57	100	84	6	8,1	58	25°	A6		
MAB2020DIN120S	DIN	2020	30,2 x 81,8	57	120	101,6	4	10,1	48	25°	A	DB SPRINTER - 70x70	
2687202465300	DIN	2020	30,2 x 81,8	65	135	108	4	12,1	55	25°	A	NISSAN-76x76 - existe JC:4520037 JF:4520067	
21552300400	DIN	2020	30,2 x 81,8	67	132	112	4	10,1	48	25°	A	72x87-SPRINTER Nouveau model-NCV3	
2687202317100	DIN	2020	30,2 x 81,8	67	132	112	4	10,1	58	25°	A	72x87-SPRINTER Nouveau model-NCV3	
0018907	DIN	2020	30,2 x 81,8	75	120	101,5	8	8,1	54	25°	A7		DANA SPICER ICUG
0018236	DIN	2020	30,2 x 81,8	75	120	101,5	8	10,1	54	25°	A7		DANA SPICER ICUG
2687202700000	DIN	2020	30,2 x 81,8	75	120	101,5	8	10,1	62		A7		
0018235	DIN	2020	30,2 x 81,8	75	120	SANS TROUS			54	25°	A7	SANS TROUS	DANA SPICER ICUG
2687202445010	SAE	2020	30,2 x 81,8	45	110	90	4	10,1	58		A	MITSUBISHI - 63,5 x 63,6	
MAB2020SAE69X58	SAE	2020	30,2 x 81,8	45	115	90	4	10,1	58		A	MITSUBISHI - 69 x 58	
MAB2020SAE1310	SAE	2020	30,2 x 81,8	60,3	99	79,4	4	10,1	58	35°	A1	SAE1310 - Bride ronde	DANA SPICER ICUG
2687202465100	SAE	2020	30,2 x 81,8	65	122	95	4	12,1	47	25°	A1	67x67 - NISSAN	DANA SPICER ICUG
MAB2020SAE69X50	SAE	2020	30,2 x 81,8	65	105	85	4	10,1	46		A	69 x 50	
0018302	SAE	2020	30,2 x 81,8	69,9	116	95,3	4	12,1	48	25°	A1	SAE1410 - Bride ronde	DANA SPICER ICUG
202002001	SAE	2020	30,2 x 81,8	69,9	116	95,3	4	11,1	40	25°	A1	SAE1410	
0018857	SAE	2020	30,2 x 81,8	82,6	120	101,5	6	10,1	54	25°	A2	DB - Bride ronde - Centrage mâle	
0018822	XS	2020	30,2 x 81,8	-	120	100	4	11	54	25°	A10		DANA SPICER ICUG
2802312000500	XS	802-31	31 x 110	-	120	100	4	11	60		A10	DB	
20202	SAE		32 x 61	46	116	93,34	4	11	40	22°	A1	Toyota / trous distants 66x66 / clip's interne	
20201	SAE		32 x 61	46	116	93,34	4	11	40	22°	A1	Toyota / trous distants 60x68 / clip's interne	

MACHOIRE A BRIDE



SAE
centrage mâle



DIN
centrage femelle

FIG A : FIXATION A CIRCLIPS

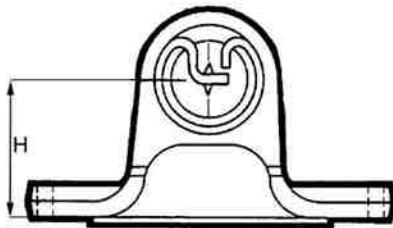


FIG B : FIXATION 2 VIS SPICER

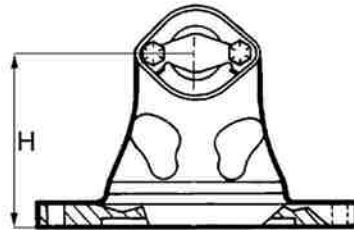


FIG C : FIXATION 2 VIS SPL

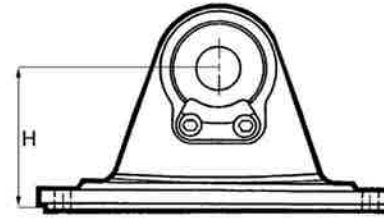


FIG D : FIXATION 3 VIS VOLVO

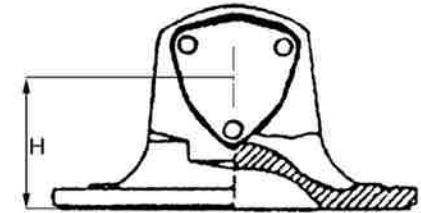


FIG 1 : SAE 4 TROUS

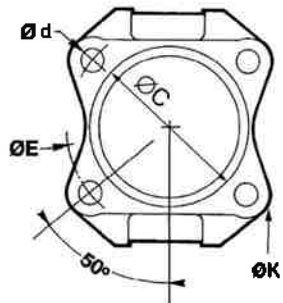


FIG 2 : SAE 6 TROUS
MERCEDES

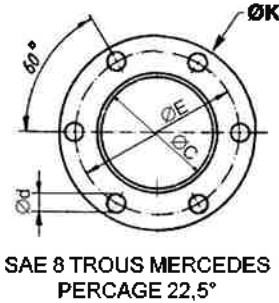


FIG 3 : SAE 8 TROUS



FIG 4 : SAE 12 TROUS

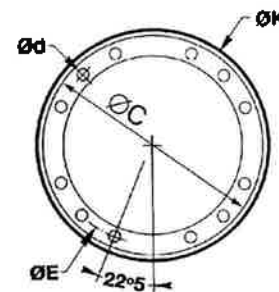


FIG 5 : DIN 4 TROUS

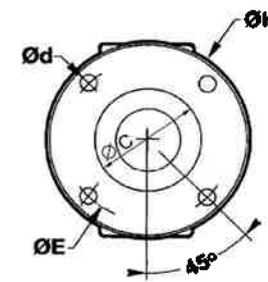


FIG 6 : DIN 6 TROUS

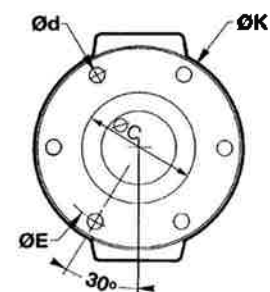


FIG 7 : DIN 8 TROUS

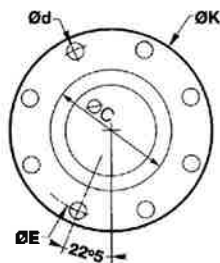


FIG 8 : DIN 10 TROUS

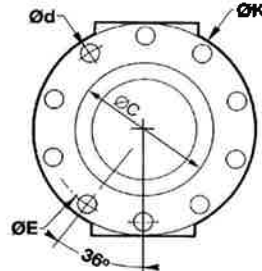


FIG 9 : DIN 10 TROUS
DESAXE

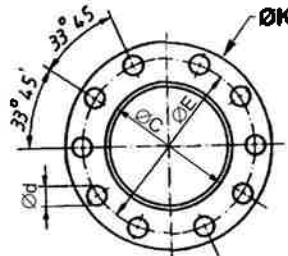


FIG 10 : DENTURE 4
TROUS

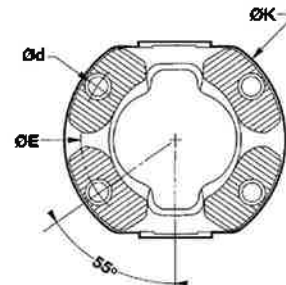


FIG 11 : UNIMOG 4 TROUS

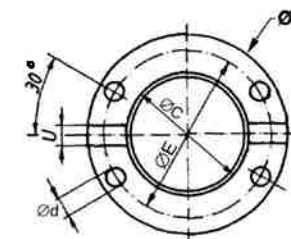
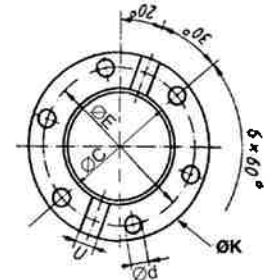


FIG 12 : UNIMOG 6 TROUS

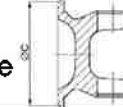


REFERENCE	TYPE	SERIE	BLOC	Ø C	Ø K	Ø E	Nbr trous	Ø d	H	Angle	FIG.	REMARQUE	ORIGINE
20112401038		124	34 x 89	50	100	80	4	10,1	48	25°	A11	KRAMER - UNIMOG	KLEIN
1112300003	DIN	112	34 x 97	75	120	101,5	8	10	60	25°	A7	En extinction	ELBE
1112300001	DIN	112	34 x 97	75	120	101,5	8	8	60	20°	A7	En extinction	ELBE
0018240	DIN	2025	34,9 x 92	75	120	101,5	8	10,1	70	35°	A7		DANA SPICER ICUG
0018326	DIN	2025	34,9 x 92	90	150	130	8	12,1	60	25°	A7		DANA SPICER ICUG
0018327	SAE	2025	34,9 x 92	95,25	150	120,7	4	14,1	60	25°	A1		DANA SPICER ICUG
0017922	XS	2025	34,9 x 92	-	120	100	4	11	60	25°	A10		DANA SPICER ICUG
321299	DIN	1480	34,9 x 106,3	75	120	101,5	8	10,1	60	22°	A7		DANA SPICER
321469	SAE	1480	34,9 x 106,3	95,2	150	120,7	4	14,1	50,8	22°	A1	3 - 2 - 479 avec Ø d = 12,7	DANA SPICER
N104866	SAE	1480	34,9 x 106,3	69,9	119	95,3	4	11,1	55	25°	A1	centrage 1410 SAE	DANA SPICER
32104	SAE	1480	34,9 x 106,3	69,9	119	95,3	4	11,1	60	25°	A1	centrage 1410 SAE	
N104866I	SAE	1480	34,9 x 106,3	69,9	119	95,3	4	12,1	60	25°	A1	centrage 1410 SAE	
2501482400335	SAE	1480	34,9 x 106,3	70	120	101,5	6	12,1	70	30°	A	4 trous distants 72 x 72 + 2 trous - MERLOT	
2501482400100	SAE	1480	34,9 x 106,3	80	120	100	4	12,1	65	22°	A	ISUZU / trous distants 81 x 58,8	
2501482400080	SAE	1480	34,9 x 106,3	80	135	110	4	12,1	62	22°	A	ISUZU / trous distants 95 x 55	
32489A	SAE	1480	34,9 x 106,3	95,2	150	120,7	4	14,1	38,1	8°	A1	3 - 2 - 489 avec Ø d = 12,7	DANA SPICER
03/02/2015	XS	1480	34,9 x 106,3	-	120	100	4	11	60	22°	A10		DANA SPICER
0018425	DIN	2030	34,9 x 106,4	75	120	101,5	8	10	72	35°	A7		DANA SPICER ICUG
0018428	DIN	2030	34,9 x 106,4	75	120	SANS			72	35°	A	SANS TROUS	DANA SPICER ICUG
MAB2030ZF76	DIN	2030	34,9 x 106,4	76,2	150	121	6	16,3	73		A2		
0018426	DIN	2030	34,9 x 106,4	90	150	130	8	12,1	78	35°	A7		DANA SPICER ICUG

MACHOIRE A BRIDE



SAE
centrage mâle



DIN
centrage femelle

FIG A : FIXATION A CIRCLIPS

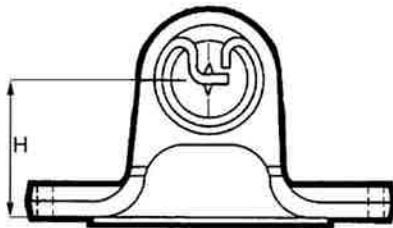


FIG B : FIXATION 2 VIS SPICER

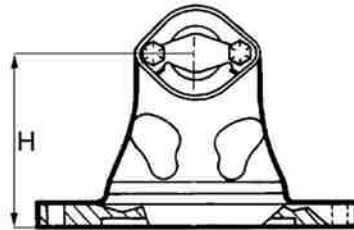


FIG C : FIXATION 2 VIS SPL

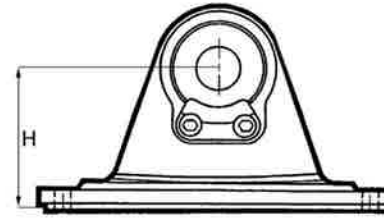


FIG D : FIXATION 3 VIS VOLVO

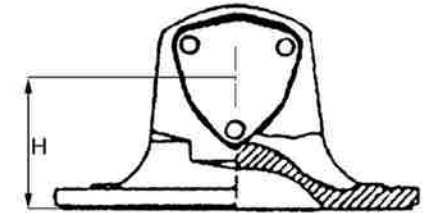


FIG 1 : SAE 4 TROUS

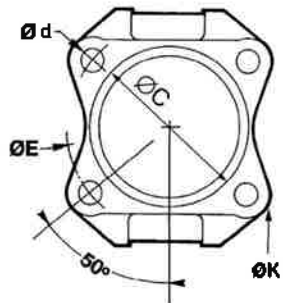


FIG 2 : SAE 6 TROUS
MERCEDES

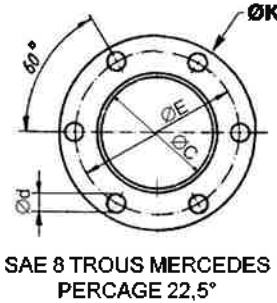


FIG 3 : SAE 8 TROUS

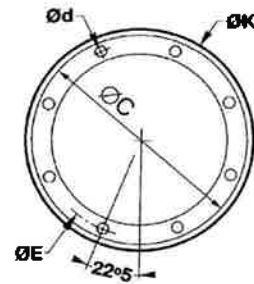


FIG 4 : SAE 12 TROUS

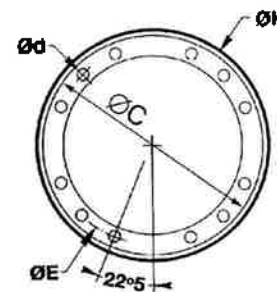


FIG 5 : DIN 4 TROUS

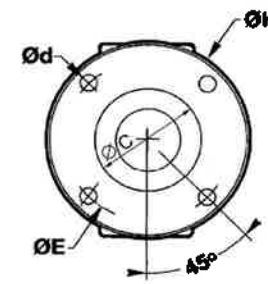


FIG 6 : DIN 6 TROUS

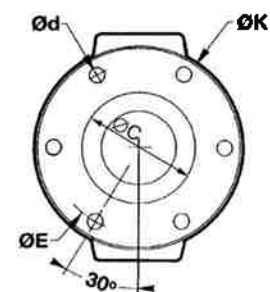


FIG 7 : DIN 8 TROUS

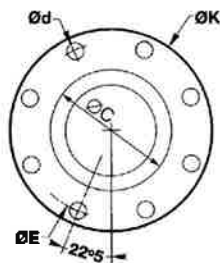


FIG 8 : DIN 10 TROUS

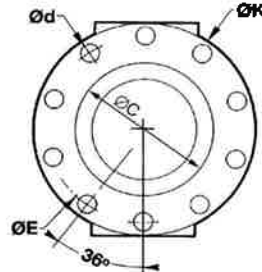


FIG 9 : DIN 10 TROUS
DESAXE

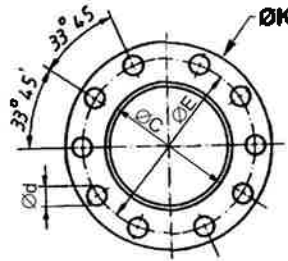


FIG 10 : DENTURE 4
TROUS

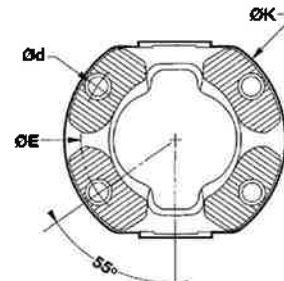


FIG 11 : UNIMOG 4 TROUS

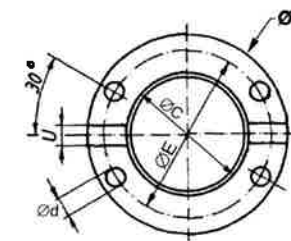
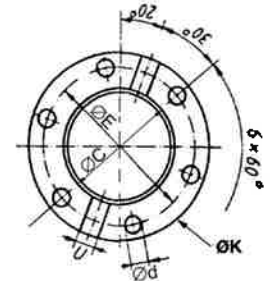


FIG 12 : UNIMOG 6 TROUS

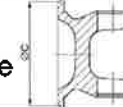


REFERENCE	TYPE	SERIE	BLOC	Ø C	Ø K	Ø E	Nbr trous	Ø d	H	Angle	FIG.	REMARQUE	ORIGINE
0018429	DIN	2030	34,9 x 106,4	90	150	SANS			78	35°	A	SANS TROUS	DANA SPICER ICUG
MAB2030ZF	SAE	2030	34,9 x 106,4	63,5	130	108	4	11,1	73		A		
0018507	SAE	2030	34,9 x 106,4	95,25	151	120,7	4	12,9	78	35°	A1		DANA SPICER ICUG
0018427	SAE	2030	34,9 x 106,4	95,25	146	120,7	4	14,2	78	35°	A1		DANA SPICER ICUG
0018644	SAE	2030	34,9 x 106,4	168,2	174,6	155,5	8	10,1	60	25°	A3		DANA SPICER ICUG
0017923	XS	2030	34,9 x 106,4	-	120	100	4	11	63,5	25°	A10	dentures frontales	DANA SPICER ICUG
0017924	XS	2030	34,9 x 106,4	-	152	130	4	13	65	25°	A10	dentures frontales	DANA SPICER ICUG
421129	DIN	1550	34,9 x 126,1	75	120	101,6	8	10,1	80	30°	A7		DANA SPICER
421069	DIN	1550	34,9 x 126,1	90	150	130	8	12,1	80	30°	A7		DANA SPICER
42679	SAE	1550	34,9 x 126,1	95,2	150	120,7	4	12,7	38,1	8°	A1		DANA SPICER
421059	SAE	1550	34,9 x 126,1	95,2	150	120,7	4	14,1	50,8	22°	A1	équiv. 4 - 2 - 669 avec Ø d = 12,7	DANA SPICER
42689A	SAE	1550	34,9 x 126,1	168	175	155,5	8	10,1	50,8	22°	A3	cent 1610 équiv. 4 - 2 - 689 Ø d = 9,76	DANA SPICER
04/02/1935	XS	1550	34,9 x 126,1	-	120	100	4	11	65	25°	A10	dentures frontales	DANA SPICER
04/02/2025	XS	1550	34,9 x 126,1	-	150	130	4	13	68	25°	A10		DANA SPICER
2287202000100	DIN	287-20	35 x 96,8	57	100	84	6	8	65	25°	A6		EDS
2287202710120	DIN	287-20	35 x 96,8	72	120	101,5	6	10	70	25°	A6	ZETTELMEYER	EDS
110990272	DIN	287-20	35 x 96,8	72	120	101,5	6	10,1	70		A	rainure de clavette frontale de 12	EDS
111054010000	DIN	287-20	35 x 96,8	75	120	101,5	8	10	64	25°	A7		EDS
111054110000	DIN	287-20	35 x 96,8	75	120	101,5	8	8,1	64	25°	A7		EDS
11115411	DIN	287-20	35 x 96,8	75	120	101,5	8	8,1	70	35°	A7		EDS
3287202000050	DIN	287-20	35 x 96,8	75	120	SANS TROUS			60		A	SANS TROUS	

MACHOIRE A BRIDE



SAE
centrage mâle



DIN
centrage femelle

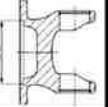


FIG A : FIXATION A CIRCLIPS

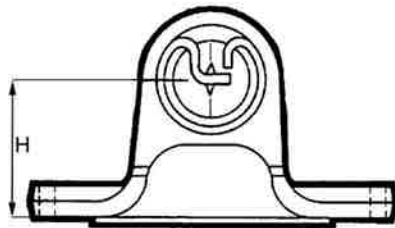


FIG B : FIXATION 2 VIS SPICER

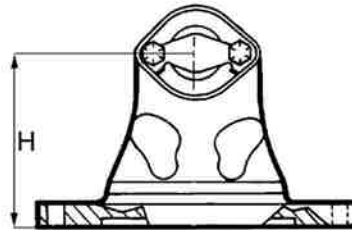


FIG C : FIXATION 2 VIS SPL

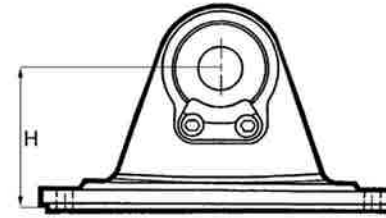


FIG D : FIXATION 3 VIS VOLVO

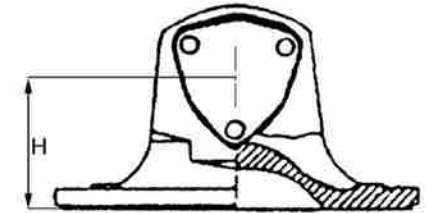


FIG 1 : SAE 4 TROUS

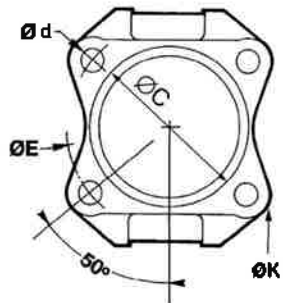


FIG 2 : SAE 6 TROUS
MERCEDES

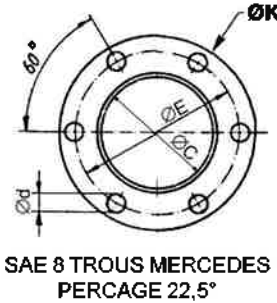


FIG 3 : SAE 8 TROUS

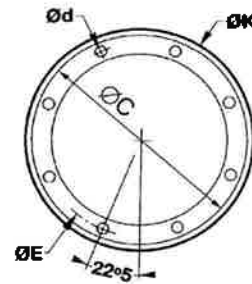


FIG 4 : SAE 12 TROUS

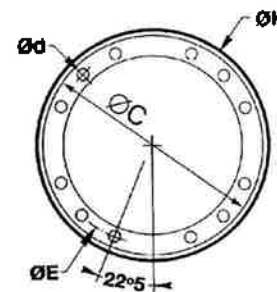


FIG 5 : DIN 4 TROUS

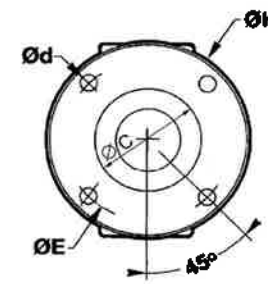


FIG 6 : DIN 6 TROUS

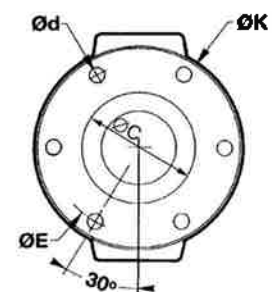


FIG 7 : DIN 8 TROUS

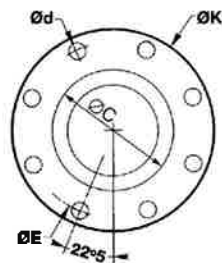


FIG 8 : DIN 10 TROUS

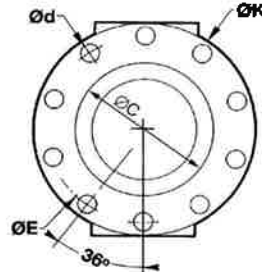


FIG 9 : DIN 10 TROUS
DESAXE

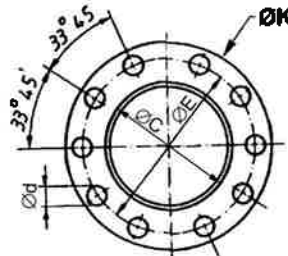


FIG 10 : DENTURE 4
TROUS

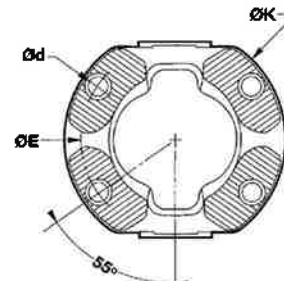


FIG 11 : UNIMOG 4 TROUS

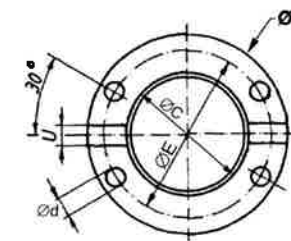
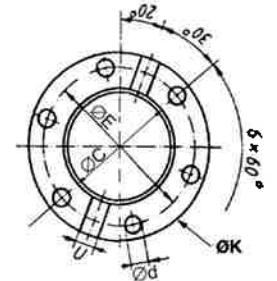


FIG 12 : UNIMOG 6 TROUS

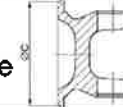


REFERENCE	TYPE	SERIE	BLOC	Ø C	Ø K	Ø E	Nbr trous	Ø d	H	Angle	FIG.	REMARQUE	ORIGINE
2287202300000	DIN	287-20	35 x 96,8	90	150	130	8	12	56		A7		EDS
0012242	DIN	287-20	35 x 96,8	90	150	130	8	12	60	25°	A7		EDS
2287202800000	DIN	287-20	35 x 96,8	90	150	130	8	10	70	35°	A7		EDS
110990253	DIN	287-20	35 x 96,8	90	150	124	4	12	56		A		EDS
11115406000	SAE	287-20	35 x 96,8	69,9	116	95,3	4	12,1	70	35°	A1	SAE1410 - BRIDE RONDE	EDS
0010690	SAE	287-20	35 x 96,8	69,9	116	95,3	4	11,1	56	18°	A1	SAE1410 - BRIDE RONDE	EDS
110990291	SAE	287-20	35 x 96,8	69,9	116	SANS TROUS			60		A	SANS TROUS	
10301062010	SAE	1062	35 x 96,8	82,5	120	101,5	6	10	60	25°	A2	MERCEDES	KEMPF
2287202417100	SAE	287-20	35 x 96,8	82,5	120	101,5	6	10	70	25°	A2	MERCEDES	EDS
11195404	SAE	287-20	35 x 96,8	95,2	150	120,7	4	12,7	70		A1	SAE1550 - BRIDE RONDE	
1112301201	DIN	112	35 x 97	90	150	130	8	10,1	60	20°	A7		ELBE
1112301203	DIN	112	35 x 97	90	150	130	8	12,1	60	20°	A7		ELBE
1112301202	DIN	112	35 x 97	90	150	SANS TROUS			60	20°	A	SANS TROUS	ELBE
1112305203	DIN	112	35 x 97	75	120	101,5	8	10	70	35°	A7		ELBE
1112300203	DIN	112	35 x 97	75	120	101,5	8	10	60	20°	A7		ELBE
1111530203	DIN	53	35 x 97	75	120	101,5	8	10	68	25°	A7		GEWES
1111530103	DIN	53	35 x 97	75	120	101,5	8	8	72	25°	A7		GEWES
20120016278		200	38 x 89	50	100	80	4	10,5	48	22°	A11	UNIMOG	KLEIN
1113300001	DIN	113	38 x 106	75	120	101,5	8	10	60	20°	A7		ELBE
1113305001	DIN	113	38 x 106	75	120	101,5	8	10	72	35°	A7		ELBE
1113301001	DIN	113	38 x 106	90	150	130	8	10	60	20°	A7		ELBE

MACHOIRE A BRIDE



SAE
centrage mâle



DIN
centrage femelle

FIG A : FIXATION A CIRCLIPS

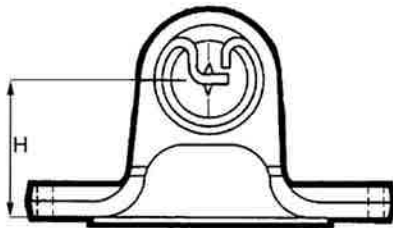


FIG B : FIXATION 2 VIS SPICER

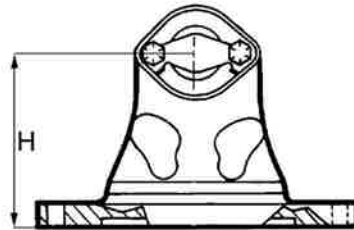


FIG C : FIXATION 2 VIS SPL

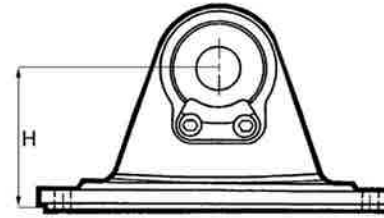


FIG D : FIXATION 3 VIS VOLVO

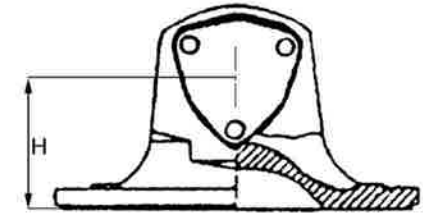


FIG 1 : SAE 4 TROUS

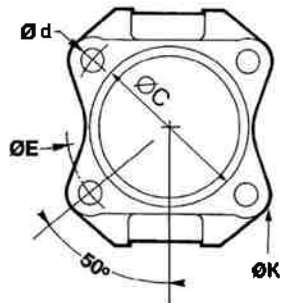


FIG 2 : SAE 6 TROUS
MERCEDES

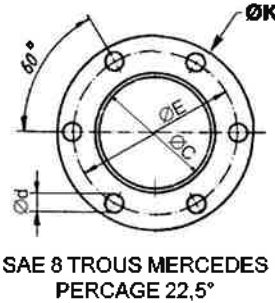


FIG 3 : SAE 8 TROUS



FIG 4 : SAE 12 TROUS

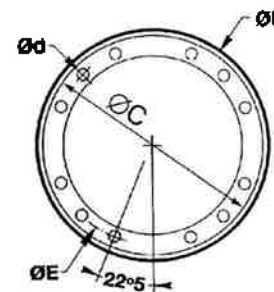


FIG 5 : DIN 4 TROUS

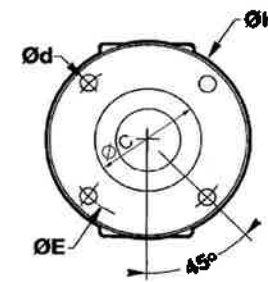


FIG 6 : DIN 6 TROUS

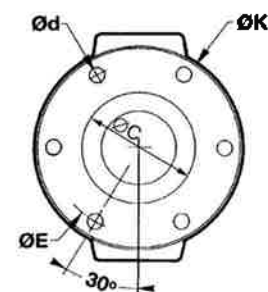


FIG 7 : DIN 8 TROUS

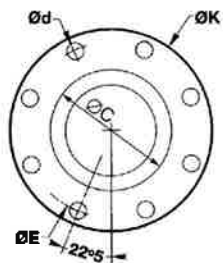


FIG 8 : DIN 10 TROUS

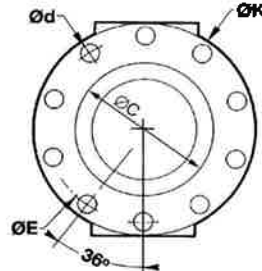


FIG 9 : DIN 10 TROUS
DESAXE

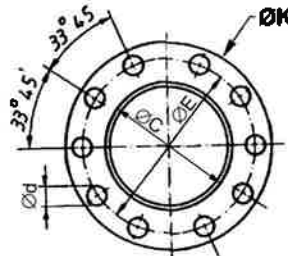


FIG 10 : DENTURE 4
TROUS

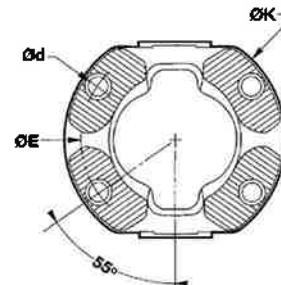


FIG 11 : UNIMOG 4 TROUS

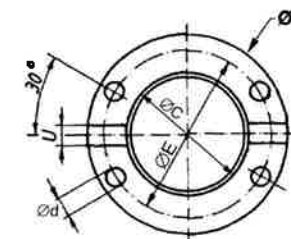
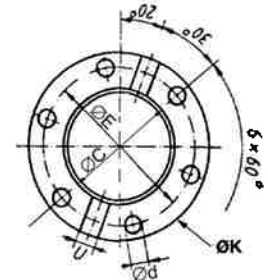


FIG 12 : UNIMOG 6 TROUS

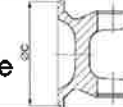


REFERENCE	TYPE	SERIE	BLOC	Ø C	Ø K	Ø E	Nbr trous	Ø d	H	Angle	FIG.	REMARQUE	ORIGINE
1113301003	DIN	113	38 x 106	90	150	130	8	12	60	20°	A7		ELBE
1113301002	DIN	113	38 x 106	90	150	SANS TROUS			60	20°	A	SANS TROUS	
110990250	SAE	113	38 x 106	82,5	130	112	8	10,1	60		A	MERCEDES	
1113308001	SAE	113	38 x 106	95,2	146	120,7	4	12,7	60		A1	SAE1550 - BRIDE RONDE	ELBE
110990308	SAE	113	38 x 106	95,2	150	120,7	4	12,7	72		A1	SAE1550 - BRIDE RONDE	
110990309	SAE	113	38 x 106	95,2	150	120,7	4	12,7	95		A1	SAE1550 - BRIDE RONDE	
12801065010	XS	113	38 x 106	-	120	100	4	11,1	72,5	25°	A10		
20119516092	DIN	196	38 x 110	75	120	101,5	8	10	75	35°	A7		KLEIN
20119616089	XS	196	38 x 110	-	120	100	4	11,1	75	35°	A10	MAN L2000	KLEIN
20119515496		196	38 x 110	72	120	101,5	6	10,4	56	22°	A12	UNIMOG	KLEIN
20119716238		196	38 x 110	-	120	95	4	11	76,3	22°	A	DENTURES KLINGELNBERG	KLEIN
2006DSC	DIN	606/1500	39,6 x 116	75	120	101,5	8	10,1	75	25°	A6	GC 606	
2502602000120	DIN	606/1500	39,6 x 116	75	120	101,6	8	10,1	65		A7		EDS
E020001	DIN	606/1500	39,6 x 116	90	150	130	8	12	90	25°	A7	GC 606	
2006SC	SAE	606/1500	39,6 x 116	95,2	146	120,6	4	12,8	63,5	22°	A1	BRIDE RONDE	
E020051	SAE	606/1500	39,6 x 116	168,2	175	155,5	8	10,1	45	10°	A3	BRIDE RONDE	
E020011	SAE	606/1500	39,6 x 116	168,2	175	155,5	8	10,1	80,5		A3	BRIDE RONDE	
90299	DIN	SPL 90	41,3 x 126,1	75	120	101,6	8	10,1	83	30°	A7		DANA SPICER
90229	DIN	SPL 90	41,3 x 126,1	90	150	130	8	12,1	83,3	25°	A7		DANA SPICER
90259	SAE	SPL 90	41,3 x 126,1	168	175	155,5	8	10,1	83,3	25°	A3		DANA SPICER
90245	XS	SPL 90	41,3 x 126,1	-	120	100	4	11	70	25°	A10		DANA SPICER

MACHOIRE A BRIDE



SAE
centrage mâle



DIN
centrage femelle

FIG A : FIXATION A CIRCLIPS

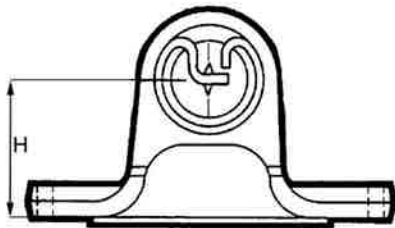


FIG B : FIXATION 2 VIS SPICER

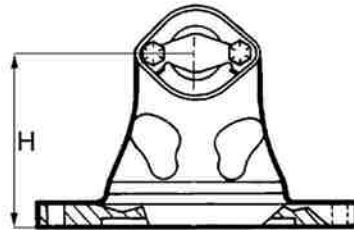


FIG C : FIXATION 2 VIS SPL

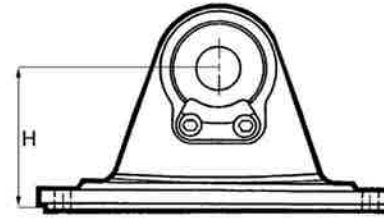


FIG D : FIXATION 3 VIS VOLVO

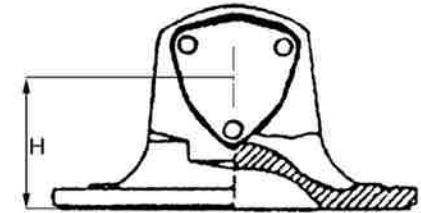


FIG 1 : SAE 4 TROUS

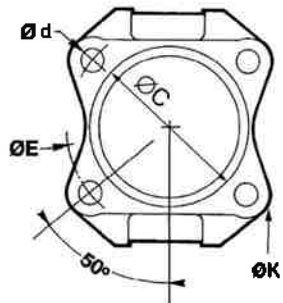


FIG 2 : SAE 6 TROUS
MERCEDES

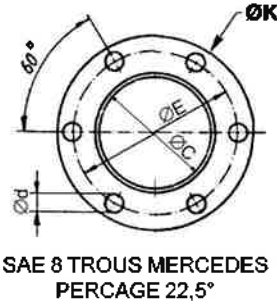


FIG 3 : SAE 8 TROUS



FIG 4 : SAE 12 TROUS

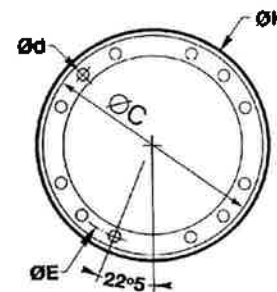


FIG 5 : DIN 4 TROUS

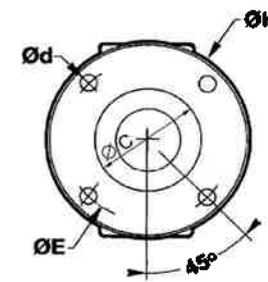


FIG 6 : DIN 6 TROUS

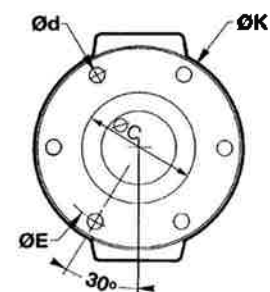


FIG 7 : DIN 8 TROUS

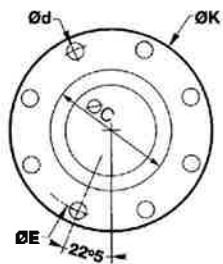


FIG 8 : DIN 10 TROUS

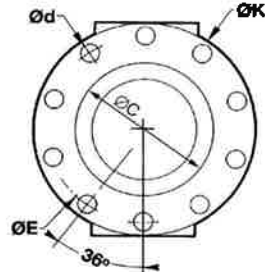


FIG 9 : DIN 10 TROUS
DESAXE

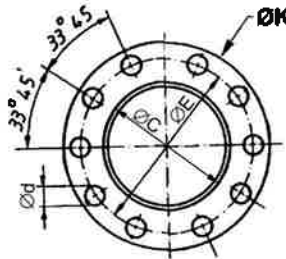


FIG 10 : DENTURE 4
TROUS

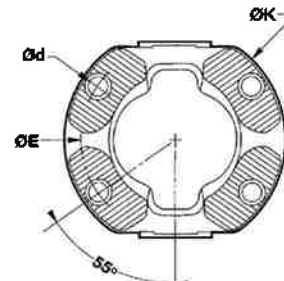


FIG 11 : UNIMOG 4 TROUS

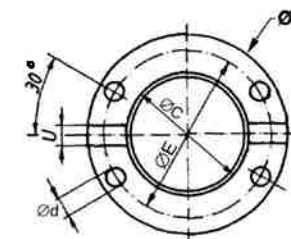
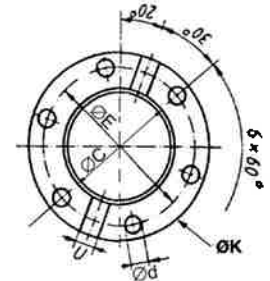


FIG 12 : UNIMOG 6 TROUS

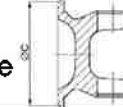


REFERENCE	TYPE	SERIE	BLOC	Ø C	Ø K	Ø E	Nbr trous	Ø d	H	Angle	FIG.	REMARQUE	ORIGINE
90215	XS	SPL 90	41,3 x 126,1	-	150	130	4	13	75	25°	A10	EX : EESKU - 000263	DANA SPICER
20125301081	DIN	587-15	42 x 104,5	75	120	101,5	8	10	75	35°	A7		KLEIN
20125303982	DIN	587-15	42 x 104,5	75	120	101,5	8	8	75	35°	A7		KLEIN
3587152700000	DIN	587-15	42 x 104,5	75	120	SANS			75	35°	A	SANS TROUS	EDS
20125401082	DIN	587-15	42 x 104,5	90	150	130	8	12,1	80	35°	A7		KLEIN
2587152300050	DIN	587-15	42 x 104,5	90	150	130	8	10,1	62		A7		EDS
2587152800070	DIN	587-15	42 x 104,5	90	150	130	8	10,1	80	35°	A7		EDS
2587152417100	DIN	587-15	42 x 104,5	82,6	130	112	8	10	70	25°	A2	MERCEDES	EDS
2587152400170	DIN	587-15	42 x 104,5	168,2	174	155,5	8	9,6	80		A3		EDS
20125416447	XS	587-15	42 x 104,5	-	122	100	4	11	75	25°	A10		KLEIN
20125503883		587-15	42 x 104,5	-	120	95	4	10,5	75	25°	A	DENTURES KLINGELNBERG - UNIMOG	EDS
10311066010	SAE	1066	42 x 106	82,6	130	112	8	10	70	25°	A2	équiv. 286 - 22 GWB / MERCEDES	KEMPF
10451066010	SAE	1066	42 x 106	95,3	150	120,6	4	14	72	25°	A1	BRIDE RONDE	KEMPF
10452066010	SAE	1066	42 x 106	95,3	150	120,6	4	12,7	72	25°	A1	BRIDE RONDE	KEMPF
12801066010	XS	1066	42 x 106	-	120	100	4	11	70	25°	A10	Réf MERCEDES 971 411 0011	KEMPF
1148305005	DIN	148	42 x 117,5	75	120	101,6	8	10,1	80	35°	A7		EDS
1148305001	DIN	148	42 x 117,5	90	150	130	8	12,1	80	35°	A8		EDS
1148300001	DIN	148	42 x 117,5	90	150	130	8	12,1	65	20°	A7		EDS
1148300007	DIN	148	42 x 117,5	90	150	130	8	10,1	65	20°	A7		EDS
1148300002	DIN	148	42 x 117,5	90	150	SANS TROUS			65	20°	A7	SANS TROUS	EDS
1148301001	DIN	148	42 x 117,5	110	180	155,5	8	12,1	65	20°	A7		EDS

MACHOIRE A BRIDE



SAE
centrage mâle



DIN
centrage femelle

FIG A : FIXATION A CIRCLIPS

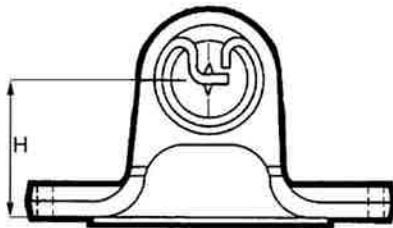


FIG B : FIXATION 2 VIS SPICER

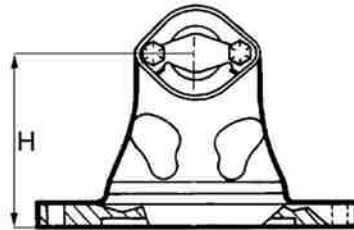


FIG C : FIXATION 2 VIS SPL

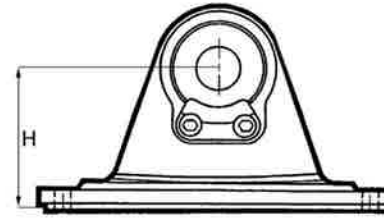


FIG D : FIXATION 3 VIS VOLVO

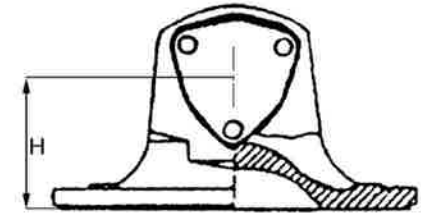


FIG 1 : SAE 4 TROUS

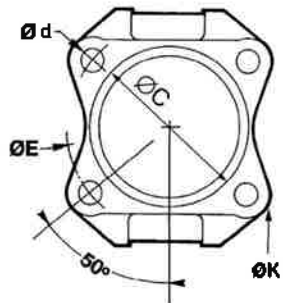


FIG 2 : SAE 6 TROUS
MERCEDES

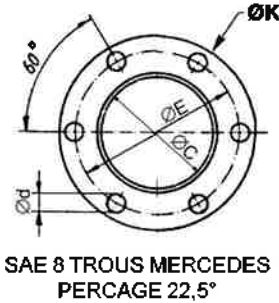


FIG 3 : SAE 8 TROUS

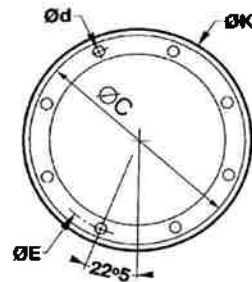


FIG 4 : SAE 12 TROUS

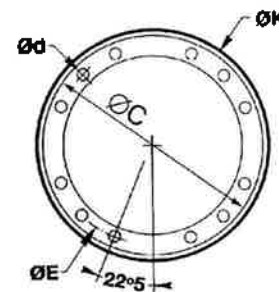


FIG 5 : DIN 4 TROUS

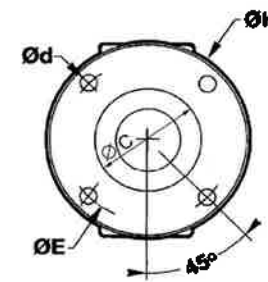


FIG 6 : DIN 6 TROUS

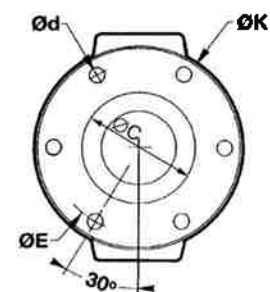


FIG 7 : DIN 8 TROUS

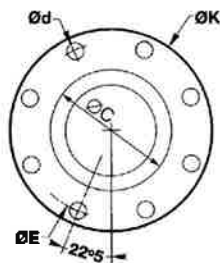


FIG 8 : DIN 10 TROUS

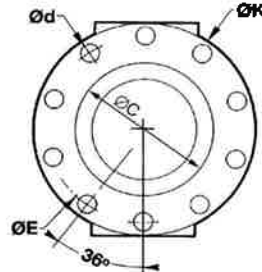


FIG 9 : DIN 10 TROUS
DESAXE

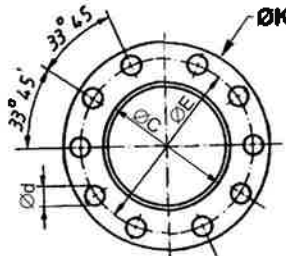


FIG 10 : DENTURE 4
TROUS

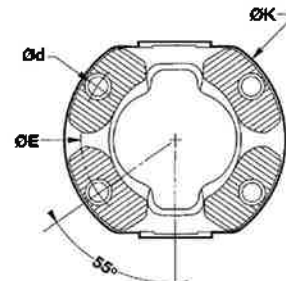


FIG 11 : UNIMOG 4 TROUS

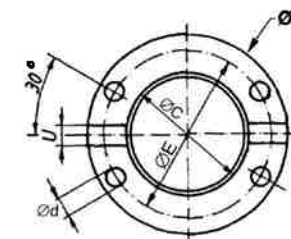
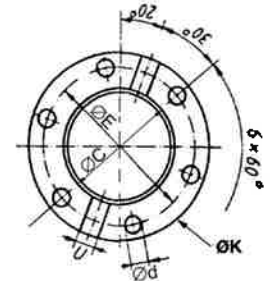


FIG 12 : UNIMOG 6 TROUS

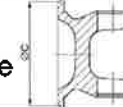


REFERENCE	TYPE	SERIE	BLOC	Ø C	Ø K	Ø E	Nbr trous	Ø d	H	Angle	FIG.	REMARQUE	ORIGINE
1148301011	DIN	148	42 x 117,5	110	180	155,5	12	16,1	65	20°	A	SCHENCK - 3 groupes de 4 trous	EDS
MAB2035DIN120	DIN	2035	42 x 119,4	75	120	101,6	8	10,1	80	25°	A7		EDS
2687352000000	DIN	2035	42 x 119,4	90	150	130	8	12,1	72	25°	A7		EDS
0017911	DIN	2035	42 x 119,4	90	150	130	8	12,1	95	44°	A7		DANA SPICER GWB
0018675	DIN	2035	42 x 119,4	90	150	SANS TROUS			95	44°	A	SANS TROUS	DANA SPICER GWB
2687352800030	DIN	2035	42 x 119,4	95	165	140	8	16,1	90	35°	A7		
0018692	DIN	2035	42 x 119,4	110	180	155,5	8	14,1	90	35°	A7		DANA SPICER GWB
2687352400020	SAE	2035	42 x 119,4	95,2	146	120,7	4	14,1	72	25°	A1		
0018778	SAE	2035	42 x 119,4	168,2	174	155,5	8	10,1	88	35°	A3		DANA SPICER GWB
0018668	SAE	2035	42 x 119,4	168,2	174	155,5	8	9,6	88	35°	A3		EDS
0017312	XS	2035	42 x 119,4	-	120	100	4	11	75	25°	A10		DANA SPICER GWB
0017311	XS	2035	42 x 119,4	-	155	130	4	13	75	25°	A10		DANA SPICER GWB
0017925	XS	2035	42 x 119,4	-	152	130	4	13	75	25°	A10		DANA SPICER GWB
2687352800500	XS	2035	42 x 119,4	-	152	130	4	13	88	35°	A10		EDS
1115300001	DIN	115	42 X 123	90	150	130	8	12,1	80	35°	A7		ELBE
0015776	DIN	NK 300	44 x 126	90	150	130	8	10	62	25°	D8	VOLVO SPECIAL DIN	
0015725	SAE	NK300	44 x 126	168,2	174	155,5	8	9	62	22°	D3	VOLVO	
SF52007	DIN	186-30	45 x 120,4	90	150	130	8	12	90	30°	A7	MERCEDES	KEMPF
110990337	DIN	57	47 x 132,2	95	165	140	8	14,1	95		A7		
521149	DIN	1610	47,6 x 134,9	90	150	130	8	12,1	91,9	35°	B7		DANA SPICER
521139	DIN	1610	47,6 x 134,9	95	165	140	8	14,1	91,9	35°	B7		DANA SPICER

MACHOIRE A BRIDE



SAE
centrage mâle



DIN
centrage femelle

FIG A : FIXATION A CIRCLIPS

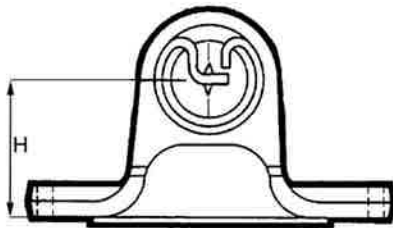


FIG B : FIXATION 2 VIS SPICER

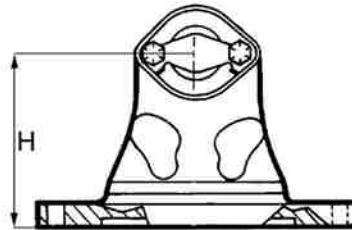


FIG C : FIXATION 2 VIS SPL

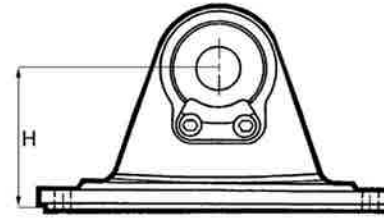


FIG D : FIXATION 3 VIS VOLVO

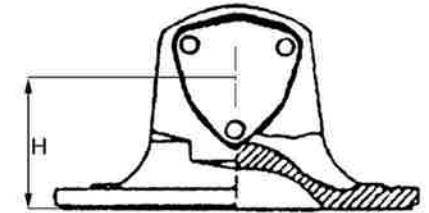


FIG 1 : SAE 4 TROUS

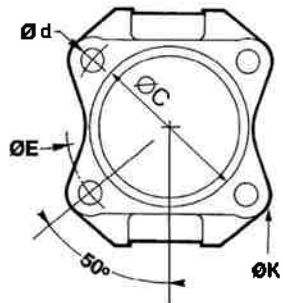


FIG 2 : SAE 6 TROUS
MERCEDES

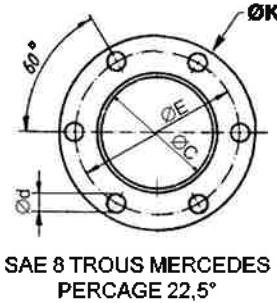


FIG 3 : SAE 8 TROUS

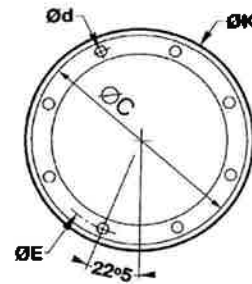


FIG 4 : SAE 12 TROUS

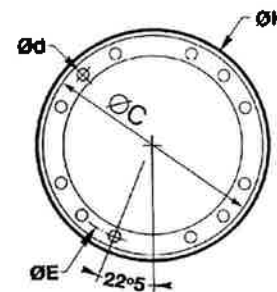


FIG 5 : DIN 4 TROUS

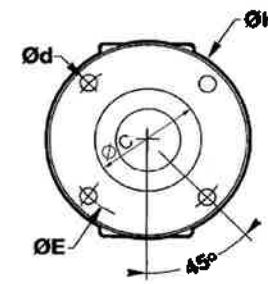


FIG 6 : DIN 6 TROUS

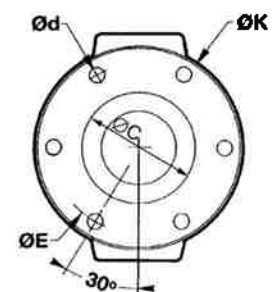


FIG 7 : DIN 8 TROUS

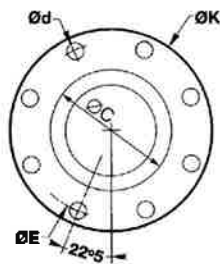


FIG 8 : DIN 10 TROUS

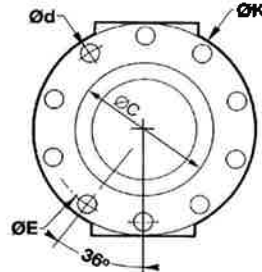


FIG 9 : DIN 10 TROUS
DESAXE

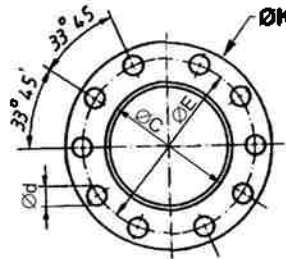


FIG 10 : DENTURE 4
TROUS

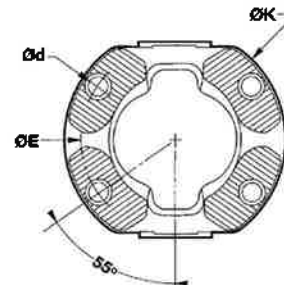


FIG 11 : UNIMOG 4 TROUS

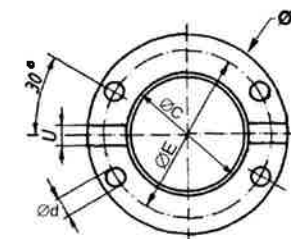
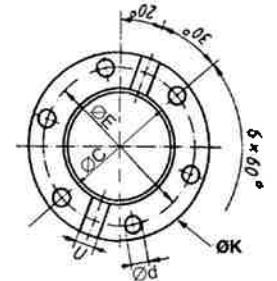


FIG 12 : UNIMOG 6 TROUS

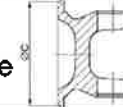


REFERENCE	TYPE	SERIE	BLOC	Ø C	Ø K	Ø E	Nbr trous	Ø d	H	Angle	FIG.	REMARQUE	ORIGINE
521039	SAE	1610	47,6 x 134,9	168	175	155,5	8	10,1	73,2	35°	B3	5 - 2 - 1059 avec Ø d = 9,76	DANA SPICER
52379A	SAE	1610	47,6 x 134,9	168	175	155,5	8	10,1	47,8	8°	B3	5 - 2 - 379 avec Ø d = 9,76	DANA SPICER
52279A	SAE	1610	47,6 x 134,9	168	175	155,5	8	10,1	69,85	22°	B3		DANA SPICER
52629	SAE	1610	47,6 x 134,9	196,8	203	184	8	9,6	68		B3		
MAB2040ZF76	DIN	2040	47,6 x 135	76,2	150	121	6	16,3	94	25°	A6	ZF	EDS
2687402000150	DIN	2040	47,6 x 135	90	150	130	8	12,1	93	25°	A7		
0017912	DIN	2040	47,6 x 135	90	150	130	8	12,1	102	44°	A7		DANA SPICER GWB
0018459	DIN	2040	47,6 x 135	90	150	130	SANS		102	44°	A	SANS TROUS	DANA SPICER GWB
0017913	DIN	2040	47,6 x 135	95	165	140	8	16,1	90	35°	A7		DANA SPICER GWB
0017916	DIN	2040	47,6 x 135	110	180	155,5	10	16,1	102	44°	A8		DANA SPICER GWB
MAB2040DIN180	DIN	2040	47,6 x 135	110	180	155,5	8	14,1	85	25°	A7		
0017914	DIN	2040	47,6 x 135	110	180	155,5	8	14,1	102	44°	A7		DANA SPICER GWB
0018437	DIN	2040	47,6 x 135	110	180	155,5	SANS		102	44°	A	SANS TROUS	DANA SPICER GWB
0018773	SAE	2040	47,6 x 135	168,2	174,6	155,5	8	10,1	70	25°	A3		DANA SPICER GWB
0018781	SAE	2040	47,6 x 135	168,2	174,6	155,5	8	10,1	100	44°	A3		DANA SPICER GWB
204002003WA	SAE	2040	47,6 x 135	168,2	174,6	155,5	8	10,1	92	40°	A3		
0018782	SAE	2040	47,6 x 135	196,8	203	184	12	9,7	70	25°	A4		DANA SPICER GWB
0018783	SAE	2040	47,6 x 135	196,8	203	184	12	10	70	25°	A4		DANA SPICER GWB
0018784	SAE	2040	47,6 x 135	196,8	203	184	12	11,1	70	25°	A4		DANA SPICER GWB
0019049	SAE	2040	47,6 x 135	196,8	203	184	12	10	100	44°	A4		DANA SPICER GWB
0017009	XS	2040	47,6 x 135	-	155	130	4	13,1	82	25°	A10		DANA SPICER GWB

MACHOIRE A BRIDE



SAE
centrage mâle



DIN
centrage femelle

FIG A : FIXATION A CIRCLIPS

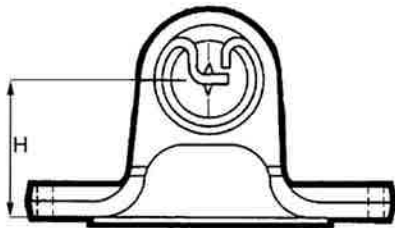


FIG B : FIXATION 2 VIS SPICER

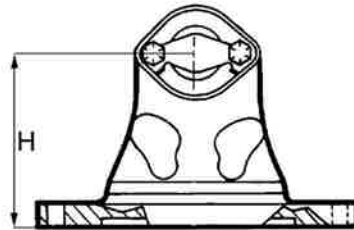


FIG C : FIXATION 2 VIS SPL

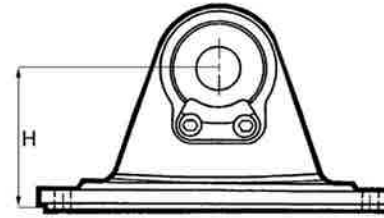


FIG D : FIXATION 3 VIS VOLVO

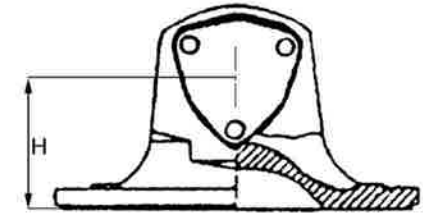


FIG 1 : SAE 4 TROUS

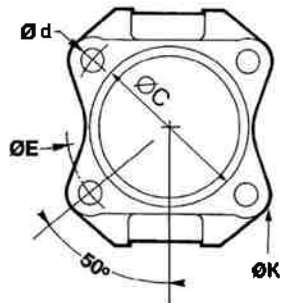


FIG 2 : SAE 6 TROUS
MERCEDES

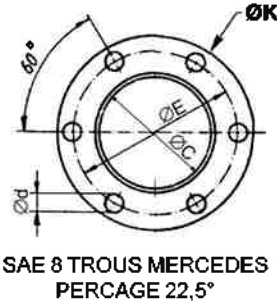


FIG 3 : SAE 8 TROUS



FIG 4 : SAE 12 TROUS

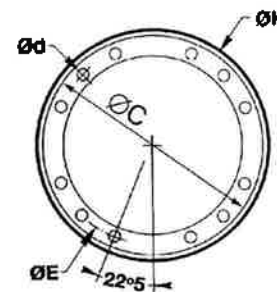


FIG 5 : DIN 4 TROUS

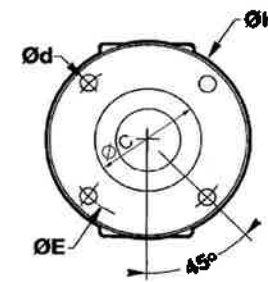


FIG 6 : DIN 6 TROUS

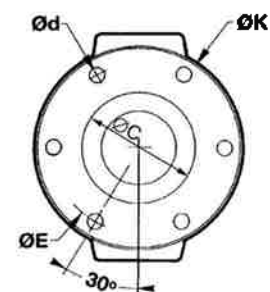


FIG 7 : DIN 8 TROUS

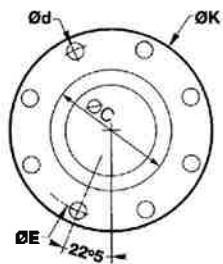


FIG 8 : DIN 10 TROUS

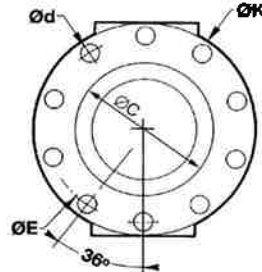


FIG 9 : DIN 10 TROUS
DESAXE

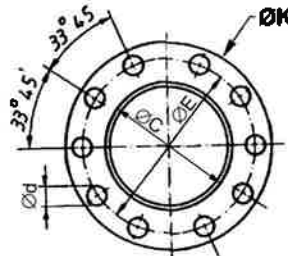


FIG 10 : DENTURE 4
TROUS

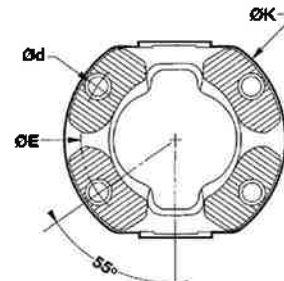


FIG 11 : UNIMOG 4 TROUS

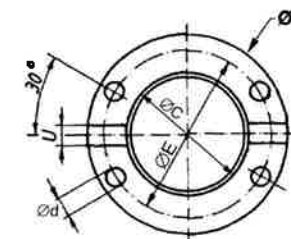
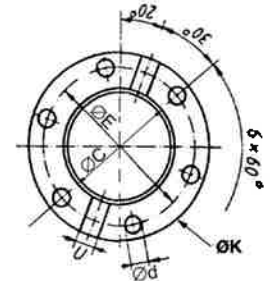


FIG 12 : UNIMOG 6 TROUS

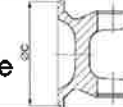


REFERENCE	TYPE	SERIE	BLOC	Ø C	Ø K	Ø E	Nbr trous	Ø d	H	Angle	FIG.	REMARQUE	ORIGINE
0017011	XS	2040	47,6 x 135	-	155	130	4	13,1	102	44°	A10		DANA SPICER GWB
0017308	XS	2040	47,6 x 135	-	180	150	4	15	82	25°	A10		DANA SPICER GWB
0017926	XS	2040	47,6 x 135	-	180	150	4	15	102	44°	A10		DANA SPICER GWB
20137501114	DIN	375	48 x 116,5	90	150	130	8	12,1	86	35°	A7	EQUIVALENT GWB 587 - 20	KLEIN
2587202700100	DIN	375	48 x 116,5	90	150	130	8	12,1	81	25°	A7	EQUIVALENT GWB 587 - 20	
201375DIN165	DIN	375	48 x 116,5	95	165	140	8	16,1	86	35°	A7	EQUIVALENT GWB 587 - 20	KLEIN
20137603890	DIN	375	48 x 116,5	110	180	155,5	8	14	86	35°	A7	EQUIVALENT GWB 587 - 20	KLEIN
3587202800020	DIN	375	48 x 116,5	110	180	SANS TROUS			86	35°	A	EQUIVALENT GWB 587 - 20	EDS
20137603958	SAE	375	48 x 116,5	168,2	175	155,5	8	10	86	35°	A3	EQUIVALENT GWB 587 - 20	KLEIN
2587202400190	SAE	587-20	48 x 116,5	196,8	203	184	12	10	86	35°	A4		EDS
20137616527	XS	375	48 x 116,5	-	120	100	4	11	75	25°	A10		KLEIN
20137501070		375	48 x 116,5	-	120	95	4	13	75	25°	A	DENTURES KLINGELNBERG	KLEIN
20137616352	XS	375	48 x 116,5	-	152	130	4	13	86	35°	A10		KLEIN
MAB58720SAE175H	SAE	587-20	48 x 116,5	168,2	175	155,5	8	10	75		A	Série 587 - 20 - pour joint double centré avec rotule	KLEIN
15311073012	DIN	286-33	48 x 126	90	150	130	4	14	53	20°	A5	MERCEDES	KEMPF
15311073017	DIN	286-33	48 x 126	90	150	130	4	14	45	5°	A5	MERCEDES	KEMPF
2186332127060	DIN	286-33	48 x 126	90	150	130	4	14	58	15°	A5	IVECO	KEMPF
10311073010	DIN	286-33	48 x 126	90	150	130	8	12	75	25°	A7	MERCEDES	KEMPF
12311073010	DIN	286-33	48 x 126	90	150	130	8	12	90	35°	A7	MERCEDES	KEMPF
2186332117070	DIN	286-33	48 x 126	90	150	130	4	12	90	35°	A7	MERCEDES	KEMPF
10161076012	DIN	286-33	48 x 126	110	180	155,5	8	14,1	72	25°	A7	MERCEDES	KEMPF

MACHOIRE A BRIDE



SAE
centrage mâle



DIN
centrage femelle

FIG A : FIXATION A CIRCLIPS

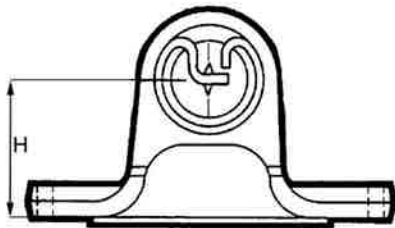


FIG B : FIXATION 2 VIS SPICER

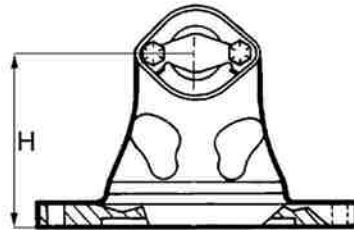


FIG C : FIXATION 2 VIS SPL

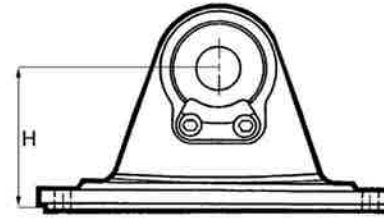


FIG D : FIXATION 3 VIS VOLVO

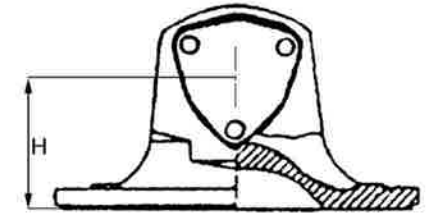


FIG 1 : SAE 4 TROUS

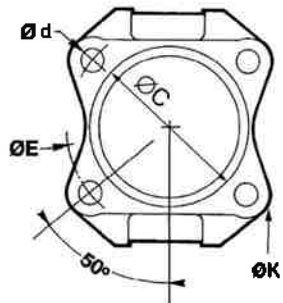


FIG 2 : SAE 6 TROUS
MERCEDES

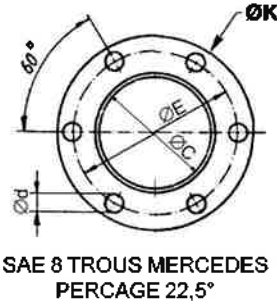


FIG 3 : SAE 8 TROUS



FIG 4 : SAE 12 TROUS

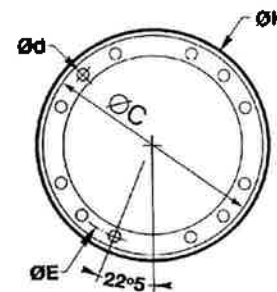


FIG 5 : DIN 4 TROUS

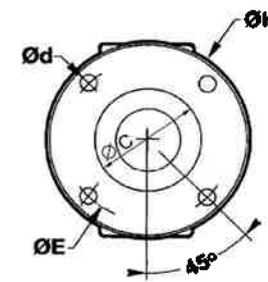


FIG 6 : DIN 6 TROUS

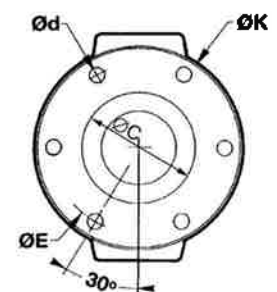


FIG 7 : DIN 8 TROUS

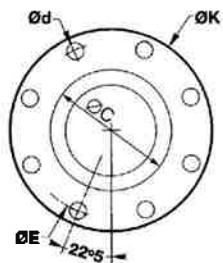


FIG 8 : DIN 10 TROUS

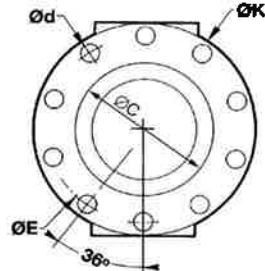


FIG 9 : DIN 10 TROUS
DESAXE

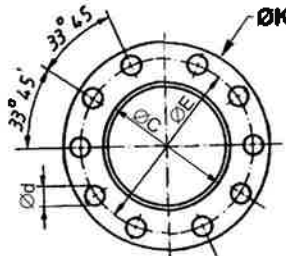


FIG 10 : DENTURE 4
TROUS

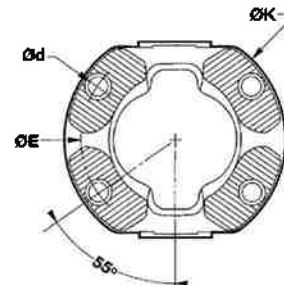


FIG 11 : UNIMOG 4 TROUS

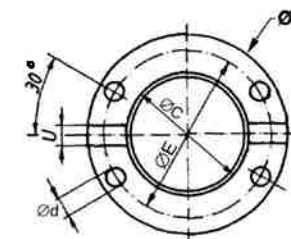
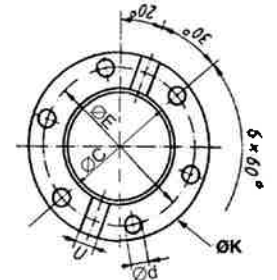


FIG 12 : UNIMOG 6 TROUS

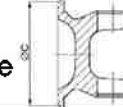


REFERENCE	TYPE	SERIE	BLOC	Ø C	Ø K	Ø E	Nbr trous	Ø d	H	Angle	FIG.	REMARQUE	ORIGINE
1158306001	DIN	286-33	48 x 126	110	180	155,5	8	14,1	90	35°	A7	MERCEDES	EDS
2186332192070	DIN	286-33	48 x 126	110	180	155,5	6	14,1	47	5°	A6	MERCEDES HANOMAG	EDS
1158308003	SAE	286-33	48 x 126	168,2	175	155,5	8	10,1	90	35°	A3		EDS
12801073010	XS	286-33	48 x 126	-	154	130	4	13	75	25°	A10	MERCEDES dentures frontales	KEMPF
2286332717500	XS	286-33	48 x 126	-	154	130	4	13	90	35°	A10	MERCEDES dentures frontales	EDS
20149016176	XS	490	48 x 135	-	155	130	4	13	82	25°	A10	équiv. 2040 et 687-40	KLEIN
20149016628	XS	490	48 x 135	-	155	130	4	13	102	44°	A10	équiv. 2040 et 687-40	KLEIN
20149016161	XS	490	48 x 135	-	180	150	4	15	82	25°	A10	équiv. 2040 et 687-40	KLEIN
140225	XS	SPL 140	49,2 x 138,6	-	155	130	4	13	79	25°	C10		DANA SPICER
140215	XS	SPL 140	49,2 x 138,6	-	180	150	4	15	82	25°	C10		DANA SPICER
G020081	DIN	806	49,2 x 154,9	110	180	155,5	10	16,1	100	35°	A8		EDS
2502802017087	SAE	2050	49,2 x 154,9	196,8	203	184	12	10,1	51	8°	A4		
0018838	SAE	2050	49,2 x 154,9	196,8	203	184	12	10,1	76,5	25°	A4		DANA SPICER GWB
0018837	SAE	2050	49,2 x 154,9	196,8	203	184	12	11,1	76,5	25°	A4		DANA SPICER GWB
0018795	SAE	2050	49,2 x 154,9	196,8	203	184	12	10,1	95	35°	A4		DANA SPICER GWB
0017271	XS	2050	49,2 x 154,9	-	180	180	4	15	85	25°	A10		DANA SPICER GWB
MAB1710DIN150C76	DIN	1710	49,2 x 155	76,2	150	121	6	17,1	85		B		
621259	DIN	1710	49,2 x 155	95	165	140	8	16,1	86,9/100	35°	B7		DANA SPICER
621309	DIN	1710	49,2 x 155	110	180	155,5	8	14,1	86,9/100	35°	B7		DANA SPICER
621339	DIN	1710	49,2 x 155	110	180	155,5	8	16,1	86,9	35°	B7		DANA SPICER
70021801016	DIN	1710	49,2 x 155	110	180	155,5	10	16,1	100	35°	B8		EDS

MACHOIRE A BRIDE



SAE
centrage mâle



DIN
centrage femelle

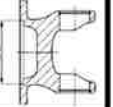


FIG A : FIXATION A CIRCLIPS

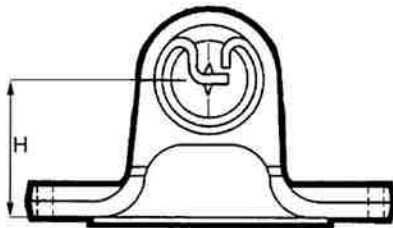


FIG B : FIXATION 2 VIS SPICER

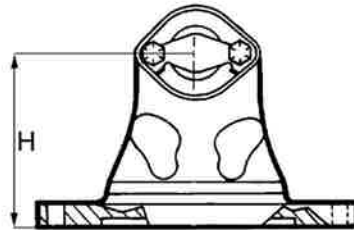


FIG C : FIXATION 2 VIS SPL

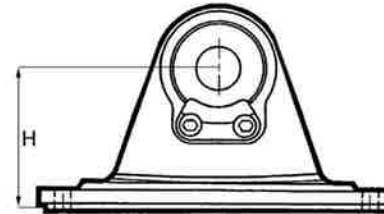


FIG D : FIXATION 3 VIS VOLVO

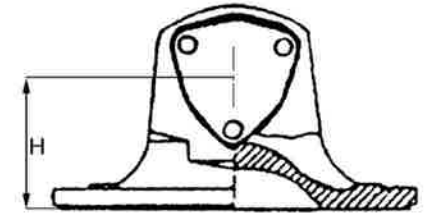


FIG 1 : SAE 4 TROUS

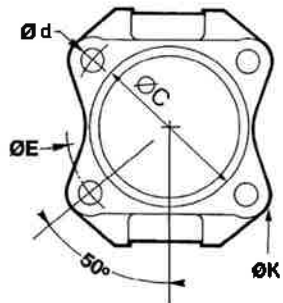


FIG 2 : SAE 6 TROUS
MERCEDES

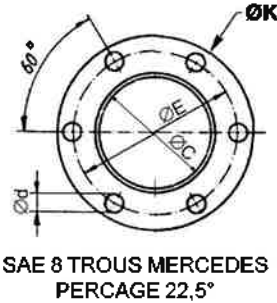


FIG 3 : SAE 8 TROUS



FIG 4 : SAE 12 TROUS

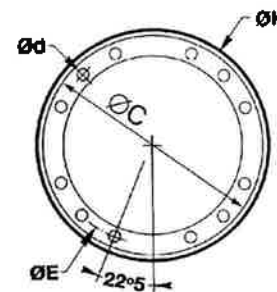


FIG 5 : DIN 4 TROUS

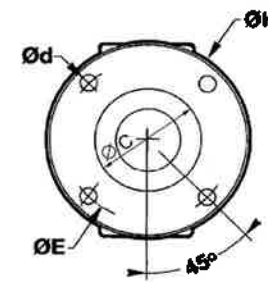


FIG 6 : DIN 6 TROUS

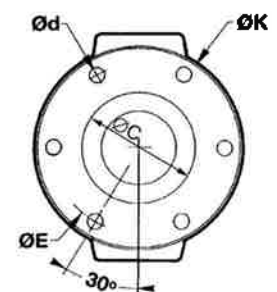


FIG 7 : DIN 8 TROUS

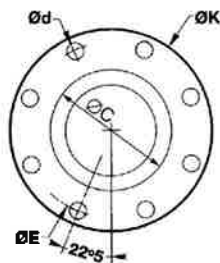


FIG 8 : DIN 10 TROUS

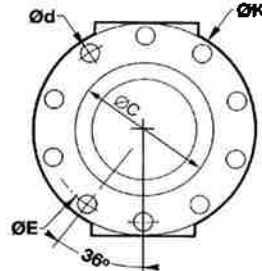


FIG 9 : DIN 10 TROUS
DESAXE

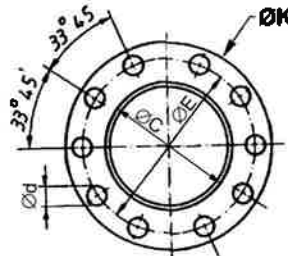


FIG 10 : DENTURE 4
TROUS

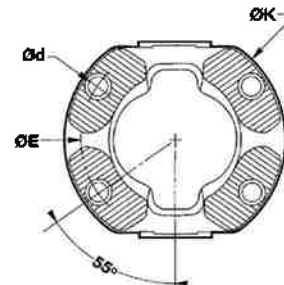


FIG 11 : UNIMOG 4 TROUS

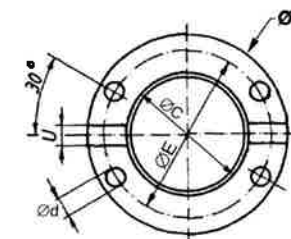
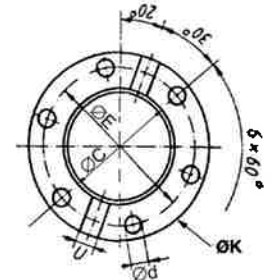


FIG 12 : UNIMOG 6 TROUS

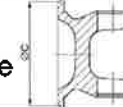


REFERENCE	TYPE	SERIE	BLOC	Ø C	Ø K	Ø E	Nbr trous	Ø d	H	Angle	FIG.	REMARQUE	ORIGINE
621299A	SAE	1710	49,2 x 155	168	175	155,5	8	10,1	98	35°	B3	CENTRAGE 1610	DANA SPICER
621359	SAE	1710	49,2 x 155	197	203	184	12	10,1	76,2	29°	B4	6 - 2 - 749 avec Ø d = 9,5 8 trous	DANA SPICER
621389	SAE	1710	49,2 x 155	197	203	184	12	10,1	79,2	35°	B4		DANA SPICER
62769A	SAE	1710	49,2 x 155	197	203	184	12	10,1	50,8	8°	B4	6 - 2 - 769 avec Ø d = 9,5 8 trous	DANA SPICER
62779	SAE	1710	49,2 x 155	197	203	184	12	11,1	76,2	20°	B4		DANA SPICER
7002001	SAE	1710	49,2 x 155	90			4	14,1				mitsubishi / trous distants 122 x 83	
06/02/2015	XS	1710	49,2 x 155	-	150	130	4	13	81	25°	B10		DANA SPICER
06/02/2025	XS	1710	49,2 x 155	-	180	150	4	15	83	25°	B10		DANA SPICER
63289	DIN	1760	49,2 x 177,8	110	180	155,5	8	14,1	108	30°	B7		DANA SPICER
63269	DIN	1760	49,2 x 177,8	110	180	155,5	8	16,1	108	30°	B7		DANA SPICER
63259	DIN	1760	49,2 x 177,8	110	180	155,5	10	16,1	108	30°	B10		DANA SPICER
63219	SAE	1760	49,2 x 177,8	197	203	184	12	11,1	86	30°	B4		DANA SPICER
63215	XS	1760	49,2 x 177,8	-	180	150	4	15	88	25°	B10		DANA SPICER
652439	DIN	1810	49,2 x 191,5	110	180	155,5	8	14,1	92	22°	B7		DANA SPICER
652419	DIN	1810	49,2 x 191,5	110	180	155,5	10	16,1	92	20°	B8		DANA SPICER
652329	SAE	1810	49,2 x 191,5	197	203	184	12	11,1	86	30°	B4		DANA SPICER
652359	SAE	1810	49,2 x 191,5	197	203	184	12	11,1	66	12°	B4		DANA SPICER
65215	XS	1810	49,2 x 191,5	-	180	150	4	15	88	25°	B10		DANA SPICER
0015816	SAE	NK400	50 x 152,6	197	203	184	8	9	76	25°	D3	VOLVO 1651030	EDS
2800402400200	SAE	NK400	50 x 152,6	197	203	184	12	10,1	76	25°	D3	VOLVO	EDS
0015268	SAE	NK400	50 x 152,6	197	203	184	12	11	76	25°	D4	VOLVO	EDS

MACHOIRE A BRIDE



SAE
centrage mâle



DIN
centrage femelle

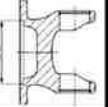


FIG A : FIXATION A CIRCLIPS

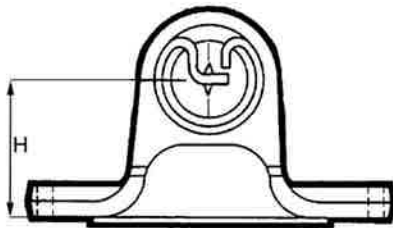


FIG B : FIXATION 2 VIS SPICER

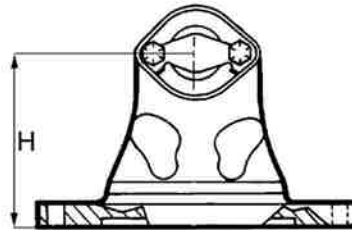


FIG C : FIXATION 2 VIS SPL

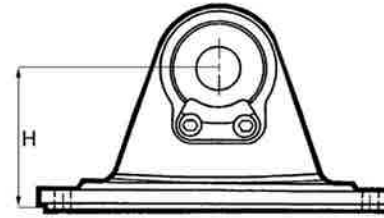


FIG D : FIXATION 3 VIS VOLVO

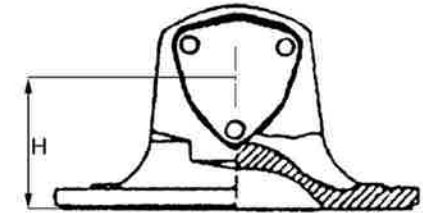


FIG 1 : SAE 4 TROUS

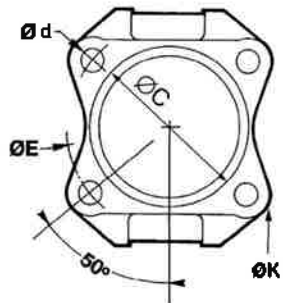


FIG 2 : SAE 6 TROUS
MERCEDES

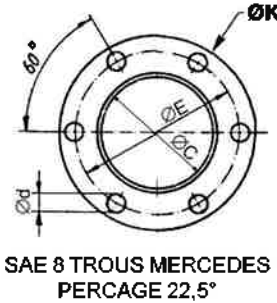


FIG 3 : SAE 8 TROUS

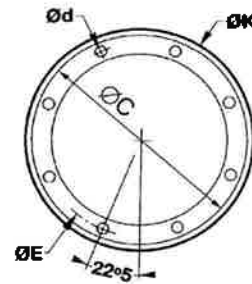


FIG 4 : SAE 12 TROUS

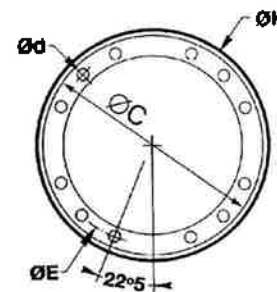


FIG 5 : DIN 4 TROUS

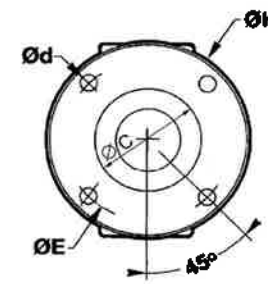


FIG 6 : DIN 6 TROUS

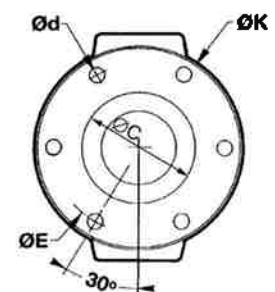


FIG 7 : DIN 8 TROUS

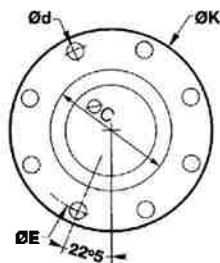


FIG 8 : DIN 10 TROUS

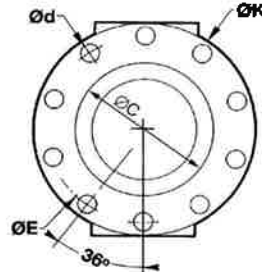


FIG 9 : DIN 10 TROUS
DESAXE

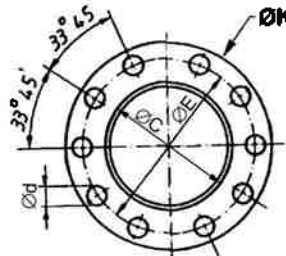


FIG 10 : DENTURE 4
TROUS

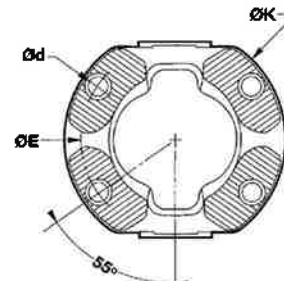


FIG 11 : UNIMOG 4 TROUS

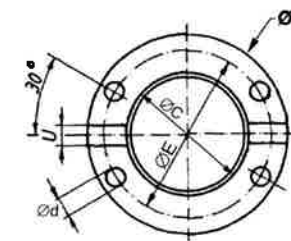
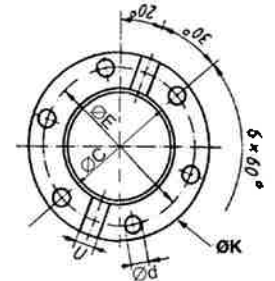


FIG 12 : UNIMOG 6 TROUS

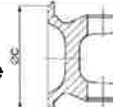


REFERENCE	TYPE	SERIE	BLOC	Ø C	Ø K	Ø E	Nbr trous	Ø d	H	Angle	FIG.	REMARQUE	ORIGINE
0015778	SAE	NK400	50 x 152,6	168,2	174	155,5	8	9	76	30°	D3	VOLVO	EDS
2587302000120	DIN	587-30	52 x 133	90	150	130	8	12	68	25°	A7	EQUIVALENT GWB 587 - 30	EDS
2587302000030	DIN	400	52 x 133	90	150	130	8	12,1	78	25°	A7	587-30	EDS
20141001093	DIN	400	52 x 133	90	150	130	8	12	95	35°	A7	EQUIVALENT GWB 587 - 30	KLEIN
20141001094	DIN	400	52 x 133	90	150	130	8	14	95	35°	A7	EQUIVALENT GWB 587 - 30	KLEIN
2587302700440	DIN	587-30	52 x 133	90	150	130	12	12,1	95	35°	A		EDS
20141015712	DIN	400	52 x 133	90	150	SANS TROUS			95	35°	A	EQUIV. GWB NON PERCEE 587 - 30	KLEIN
20146003959	DIN	400	52 x 133	95	165	140	8	16	95	35°	A7	EQUIVALENT GWB 587 - 30	KLEIN
MAB58730165	DIN	587-30	52 x 133	95	165	140	4	14,1	95	35°	A5		EDS
20149001098	DIN	400	52 x 133	110	180	155,5	8	14	95	35°	A7	EQUIVALENT GWB 587 - 30	KLEIN
0012804	DIN	587-30	52 x 133	110	180	155,5	8	14	80	24°	A7	EQUIVALENT GWB 587 - 30	DANA SPICER GWB
20149001099	DIN	400	52 x 133	110	180	155,5	8	16	95	35°	A7	EQUIVALENT GWB 587 - 30	KLEIN
2587302300130	DIN	587-30	52 x 133	110	180	155,5	10	16	78	24°	A8	EQUIVALENT GWB 587 - 30	EDS
20149001118	DIN	400	52 x 133	110	180	155,5	10	16	95	35°	A8	EQUIVALENT GWB 587 - 30	KLEIN
2587302800225	DIN	587-30	52 x 147	140	225	196	8	16,1	90	25°	A7		
MAB58730165	SAE	587-30	52 x 133	95	165	140	4	14,1	95	35°	A		EDS
2587302400070	SAE	587-30	52 x 133	168,2	174,6	155,5	8	9,5	76	24°	A3	EQUIVALENT GWB 587-30 / SAE1600	EDS
20149515235	SAE	400	52 x 133	168,2	174,6	155,5	8	9,5	95	35°	A3	EQUIVALENT GWB 587-30 / SAE1600	KLEIN
20149515002	SAE	400	52 x 133	196,8	203	184,2	12	10	95	35°	A4	EQUIVALENT GWB 587-30 / SAE1700	KLEIN
2587302400210	SAE	587-30	52 x 133	196,8	203	184,2	12	11	95	35°	A4	EQUIVALENT GWB 587-30 / SAE1700	
SF62022	SAE	587-30	52 x 133	196,8	203	184,2	12	10	70	25°	A4	SAE1700	KEMPF

MACHOIRE A BRIDE



SAE
centrage mâle



DIN
centrage femelle

FIG A : FIXATION A CIRCLIPS

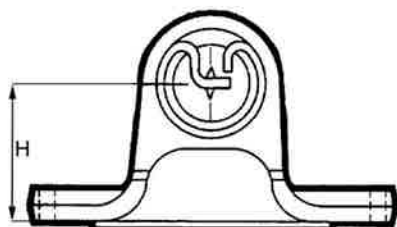


FIG B : FIXATION 2 VIS SPICER

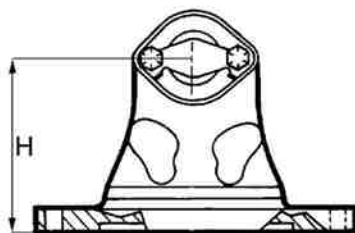


FIG C : FIXATION 2 VIS SPL

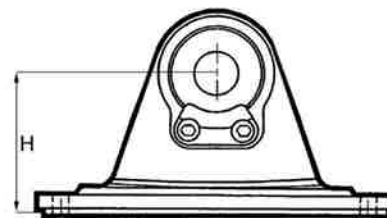


FIG D : FIXATION 3 VIS VOLVO

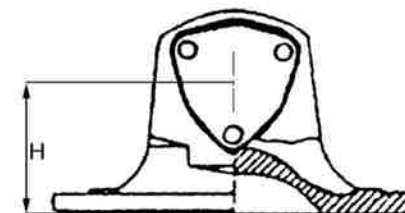


FIG 1 : SAE 4 TROUS

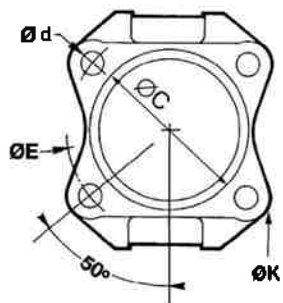


FIG 2 : SAE 6 TROUS
MERCEDES

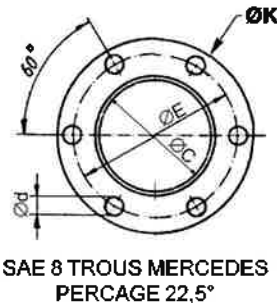


FIG 3 : SAE 8 TROUS

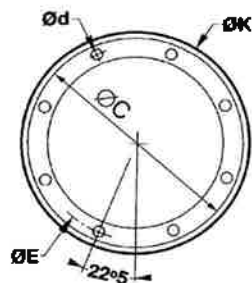


FIG 4 : SAE 12 TROUS

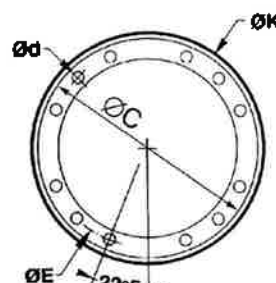


FIG 5 : DIN 4 TROUS

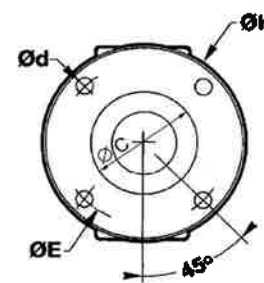


FIG 6 : DIN 6 TROUS

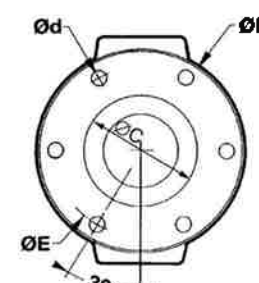


FIG 7 : DIN 8 TROUS

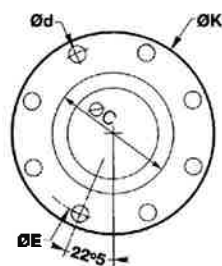


FIG 8 : DIN 10 TROUS

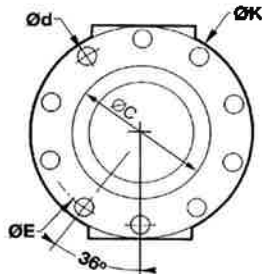


FIG 9 : DIN 10 TROUS
DESAXE

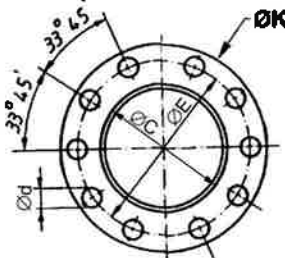


FIG 10 : DENTURE 4
TROUS

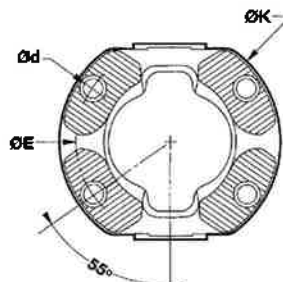


FIG 11 : UNIMOG 4 TROUS

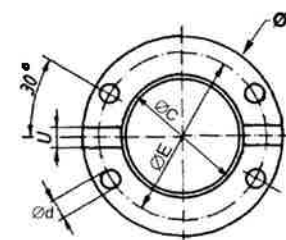


FIG 12 : UNIMOG 6 TROUS

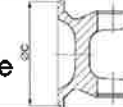


REFERENCE	TYPE	SERIE	BLOC	Ø C	Ø K	Ø E	Nbr trous	Ø d	H	Angle	FIG.	REMARQUE	ORIGINE
20149015882	XS	400	52 x 133	-	180	150	4	15	95	35°	A10	EQUIVALENT GWB 587 - 30	KLEIN
12801078010	XS	587-30	52 x 133	-	165	140	4	13	95	35°	A10	EQUIVALENT GWB 587 - 30	KLEIN
20149015597	XS	400	52 x 133	-	150	130	4	13	95	35°	A10	EQUIVALENT GWB 587 - 30	KLEIN
25873002000510	XS	587-30	52 x 133	-	150	130	4	13	78	25°	A10	EQUIVALENT GWB 587 - 30	
0017917	DIN	2045	52 x 147,2	95	165	140	8	16,1	112	44°	A7		DANA SPICER GWB
0017918	DIN	2045	52 x 147,2	110	180	155,5	8	14,1	95	35°	A7		DANA SPICER GWB
0017919	DIN	2045	52 x 147,2	110	180	155,5	8	16,1	95	35°	A7		DANA SPICER GWB
0017476	DIN	2045	52 x 147,2	110	180	155,5	10	16,1	95	35°	A8		DANA SPICER GWB
0018438	DIN	2045	52 x 147,2	110	180	155,5	SANS		95	35°	A	SANS TROUS	DANA SPICER GWB
36884523000060	DIN	2045	52 x 147,2	140	225				95	25°	A	SANS TROUS	EDS
0018729	DIN	2045	52 x 147,2	140	225	196	8	16,1	90	25°	A7		DANA SPICER GWB
0018921	SAE	2045	52 x 147,2	168,2	175	155,5	8	9,5	95	35°	A3		
0018789	SAE	2045	52 x 147,2	196,8	203	184,12	12	10,1	86	25°	A4		DANA SPICER GWB
0018790	SAE	2045	52 x 147,2	196,8	203	184,12	12	11,1	86	25°	A4		DANA SPICER GWB
0018788	SAE	2045	52 x 147,2	196,8	203	184,12	12	9,6	86	25°	A4		DANA SPICER GWB
0017928	XS	2045	52 x 147,2	-	155	130	4	13	100	37°	A10	IVECO	DANA SPICER GWB
20159016369	XS	590	52 x 147,2	-	150	130	4	13	85	25°	A10	équiv. GKN 2045	KLEIN
0017014	XS	2045	52 x 147,2	-	180	150	4	15	87	25°	A10	IVECO	DANA SPICER GWB
20159016147	XS	590	52 x 147,2	-	180	150	4	15	85	25°	A10	équiv. GKN 2045	KLEIN
0017303	XS	2045	52 x 147,2	-	180	150	4	15	108	44°	A10		DANA SPICER GWB
20159016283	XS	590	52 x 147,2	-	180	150	4	15	108	44°	A10	équiv. GKN 2045	KLEIN

MACHOIRE A BRIDE



SAE
centrage mâle



DIN
centrage femelle

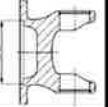


FIG A : FIXATION A CIRCLIPS

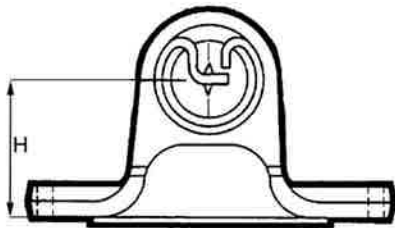


FIG B : FIXATION 2 VIS SPICER

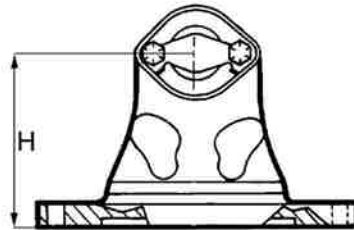


FIG C : FIXATION 2 VIS SPL

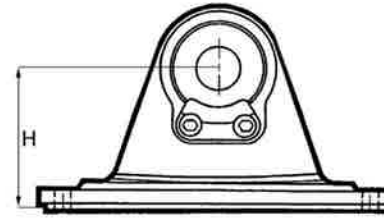


FIG D : FIXATION 3 VIS VOLVO

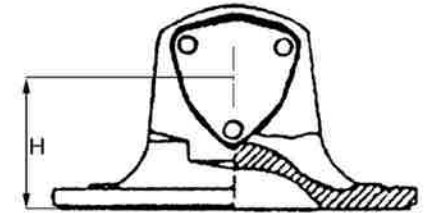


FIG 1 : SAE 4 TROUS

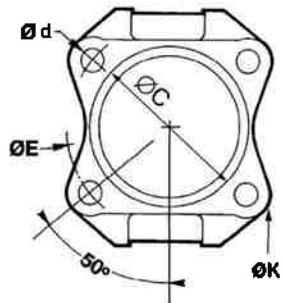


FIG 2 : SAE 6 TROUS
MERCEDES

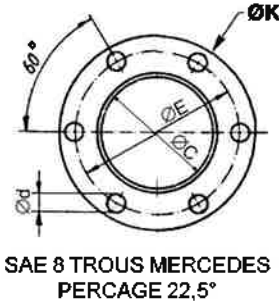


FIG 3 : SAE 8 TROUS

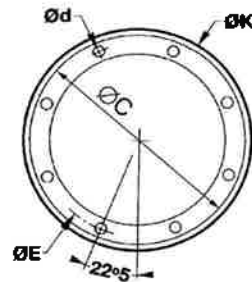


FIG 4 : SAE 12 TROUS

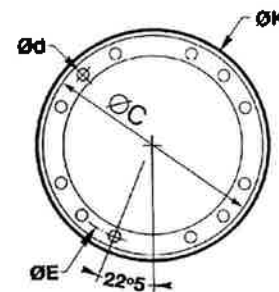


FIG 5 : DIN 4 TROUS

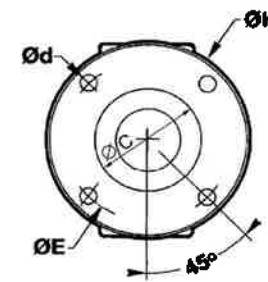


FIG 6 : DIN 6 TROUS

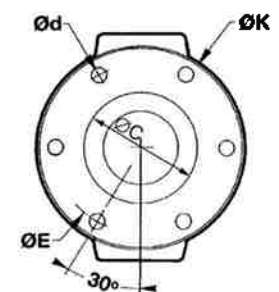


FIG 7 : DIN 8 TROUS

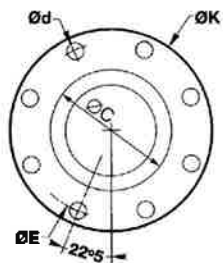


FIG 8 : DIN 10 TROUS

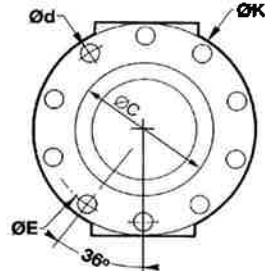


FIG 9 : DIN 10 TROUS
DESAXE

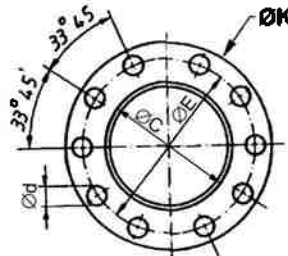


FIG 10 : DENTURE 4
TROUS

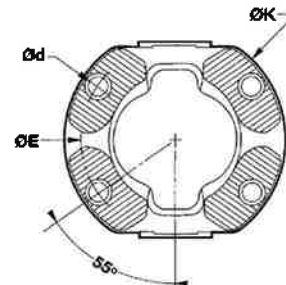


FIG 11 : UNIMOG 4 TROUS

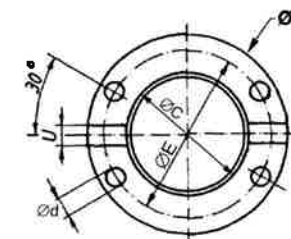
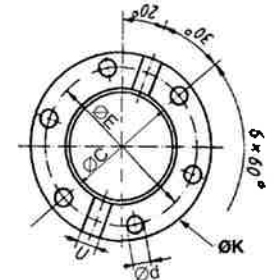


FIG 12 : UNIMOG 6 TROUS

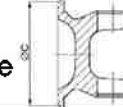


REFERENCE	TYPE	SERIE	BLOC	Ø C	Ø K	Ø E	Nbr trous	Ø d	H	Angle	FIG.	REMARQUE	ORIGINE
15311075010	DIN	286-37	53 x 135	95	165	140	8	16	85	25°	A7	MERCEDES	KEMPF
1863702745	DIN	286-37	53 x 135	95	165	140	8	16	90		A7	MERCEDES	EDS
12311075010	DIN	286-37	53 x 135	95	165	140	8	16	97	35°	A7	MERCEDES	KEMPF
15311075013	DIN	286-37	53 x 135	110	180	155,5	8	14,1	85	25°	A7	MERCEDES	KEMPF
15311075012	DIN	286-37	53 x 135	110	180	155,5	10	16,1	85	25°	A8	MERCEDES	KEMPF
12801075010	XS	286-37	53 x 135	-	165	140	4	13	97	35°	A10	MERCEDES	KEMPF
14801075010	XS	286-37	53 x 135	-	155	130	4	13	85	25°	A10	MERCEDES	KEMPF
15801075010	XS	286-37	53 x 135	-	180	150	4	15	90	35°	A10	MERCEDES	KEMPF
170219	SAE	SPL 170	55 x 163,9	197	203	184	12	11,1	81,5	25°	C4		DANA SPICER
170215	XS	SPL 170	55 x 163,9	-	180	150	4	15	87	25°	C10		DANA SPICER
170225	XS	SPL 170	55 x 163,9	-	155	130	4	13	82,5	25°	C10		DANA SPICER
82109	SAE	1880	55,5 x 205,5	178	241	209,4	8	16	88,9	22°	B1	8 trous	DANA SPICER
20160015579	DIN	600	57 x 144	95	165	140	8	16	100	35°	A7	EQUIVALENT GWB 587 - 35 / 36	KLEIN
20160003978	DIN	600	57 x 144	110	180	155,5	8	14	100	35°	A7	EQUIVALENT GWB 587 - 35 / 36	KLEIN
2587352000060	DIN	587-35	57 x 144	110	180	155,5	8	14	85	25°	A7	EQUIVALENT GWB 587 - 35 / 36	EDS
20160004014	DIN	600	57 x 144	110	180	155,5	10	16	100	35°	A8	EQUIVALENT GWB 587 - 35 / 36	KLEIN
20160015056	DIN	600	57 x 144	110	180	155,5	8	16	100	35°	A7	EQUIVALENT GWB 587 - 35 / 36	KLEIN
20160015624	DIN	600	57 x 144	110	180	155,5	10	16	100	35°	A9	EQUIV. GWB 587-35/36 trous désaxés	KLEIN
2587352300000	DIN	587-35	57 x 144	140	225	196	8	16	85	24°	A7		EDS
20161015135	DIN	600	57 x 144	140	225	196	8	16	100	35°	A7	EQUIVALENT GWB 587 - 35 / 36	KLEIN
2587352400240	SAE	600	57 x 144	196,8	203	184,2	12	10,1	100	35°	A4	EQUIVALENT GWB 587 - 35 / 36	EDS

MACHOIRE A BRIDE



SAE
centrage mâle



DIN
centrage femelle

FIG A : FIXATION A CIRCLIPS

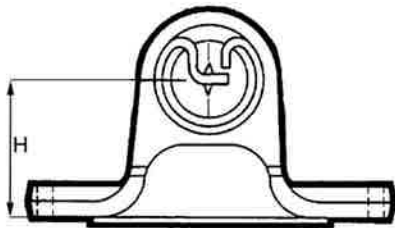


FIG B : FIXATION 2 VIS SPICER

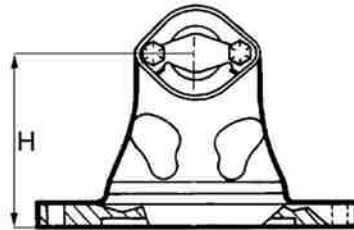


FIG C : FIXATION 2 VIS SPL

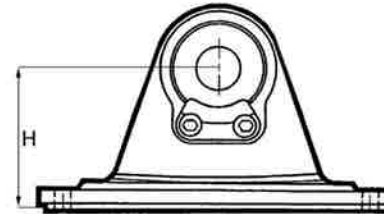


FIG D : FIXATION 3 VIS VOLVO

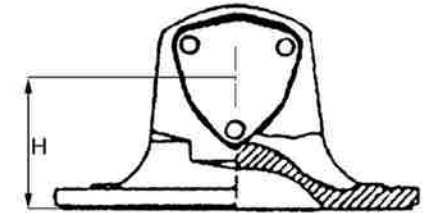


FIG 1 : SAE 4 TROUS

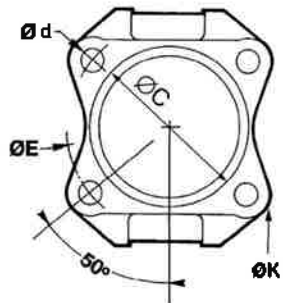


FIG 2 : SAE 6 TROUS
MERCEDES

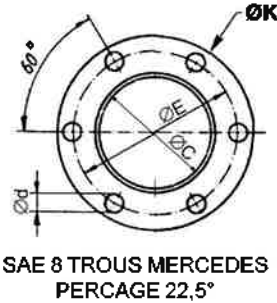


FIG 3 : SAE 8 TROUS

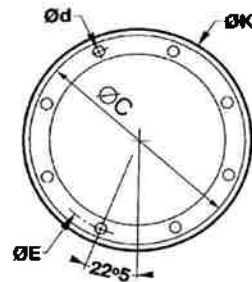


FIG 4 : SAE 12 TROUS

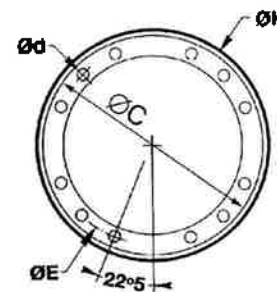


FIG 5 : DIN 4 TROUS

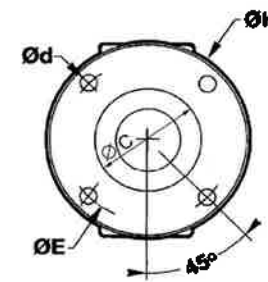


FIG 6 : DIN 6 TROUS

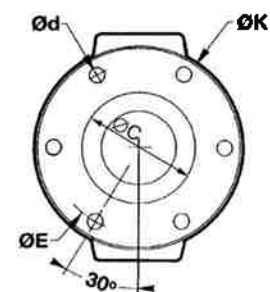


FIG 7 : DIN 8 TROUS

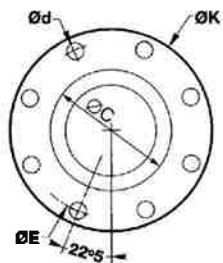


FIG 8 : DIN 10 TROUS

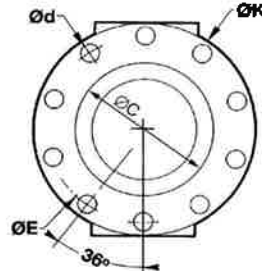


FIG 9 : DIN 10 TROUS
DESAXE

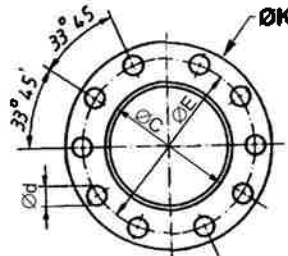


FIG 10 : DENTURE 4
TROUS

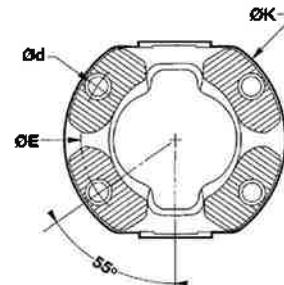


FIG 11 : UNIMOG 4 TROUS

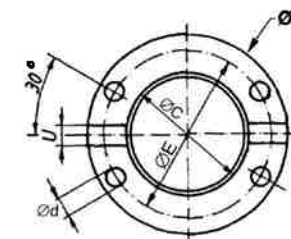
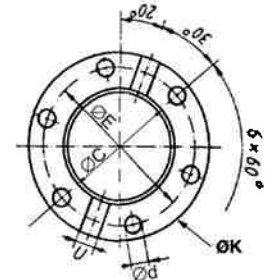


FIG 12 : UNIMOG 6 TROUS

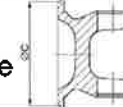


REFERENCE	TYPE	SERIE	BLOC	Ø C	Ø K	Ø E	Nbr trous	Ø d	H	Angle	FIG.	REMARQUE	ORIGINE
20160515211	SAE	600	57 x 144	196,8	203	184,2	12	11,1	95	35°	A4	EQUIVALENT GWB 587 - 35 / 36	KLEIN
0012855	SAE	587-35	57 x 144	196,8	203	184,2	12	11,1	80	24°	A4		EDS
20160015896	XS	600	57 x 144	-	150	130	4	13	100	35°	A10	EQUIVALENT GWB 587 - 35 / 36	KLEIN
20160015591	XS	600	57 x 144	-	180	150	4	15	100	35°	A10	EQUIVALENT GWB 587 - 35 / 36	KLEIN
0017920	DIN	587-42	57 x 152	110	180	155,5	8	14	115	35°	A7	EQUIVALENT 587 - 42 / 2055	DANA SPICER GWB
2587422000100	DIN	587-42	57 x 152	110	180	155,5	8	14	95	25°	A7	EQUIVALENT 587 - 42 / 2055	EDS
1120303011	DIN	120	57 x 152	110	180	155,5	8	16	86	24°	A7	EQUIVALENT 587 - 42 / 2055	ELBE
1120300005	DIN	120	57 x 152	110	180	155,5	8	16	96	35°	A7	EQUIVALENT 587 - 42 / 2055	ELBE
1120300007	DIN	120	57 x 152	110	180	155,5	8	14	96	35°	A7	EQUIVALENT 587 - 42 / 2055	ELBE
0017921	DIN	2055	57 x 152	110	180	155,5	8	16,1	115	35°	A7	2055 / 587 - 42	DANA SPICER GWB
0017964	DIN	2055	57 x 152	110	180	155,5	10	16,1	115	35°	A8	2055 / 587 - 42	DANA SPICER GWB
11117305	DIN	120	57 x 152	110	180	155,5	10	16	100	35°	A8	EQUIVALENT 587 - 42 / 2055	
20165015659	DIN	650	57 x 152	110	180	155,5	10	16	95	35°	A8	EQUIVALENT 587 - 42 / 2055	KLEIN
1120303001	DIN	120	57 x 152	110	180	155,5	10	16	86	24°	A8	EQUIVALENT 587 - 42 / 2055	ELBE
1120300001	DIN	120	57 x 152	110	180	155,5	10	16	96	24°	A8	EQUIVALENT 587 - 42 / 2055	ELBE
1120300002	DIN	120	57 x 152	110	180				96	30°	A	587 - 42 / 2055 / SANS TROUS	ELBE
10161093010	DIN	587-42	57 x 152	140	225	196	8	16,1	92	25°	A7		KEMPF
1120301001	DIN	120	57 x 152	140	225	196	8	16,1	96	25°	A7	EQUIVALENT 587 - 42 / 2055	ELBE
110990695	DIN	587 - 42	57 x 152	140	225	196	8	17,1	95		A	avec rainure de clavette frontale de 32	
2587422300070	DIN	587 - 42	57 x 152	140	225	196	12	16,1	95		A		
2587422800250	DIN	587-42	57 x 152	140	250	218	8	18,1	100		A7	EQUIVALENT 587 - 42 / 2055	

MACHOIRE A BRIDE



SAE
centrage mâle



DIN
centrage femelle

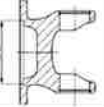


FIG A : FIXATION A CIRCLIPS

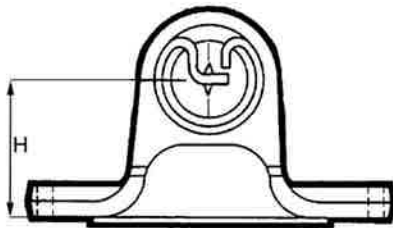


FIG B : FIXATION 2 VIS SPICER

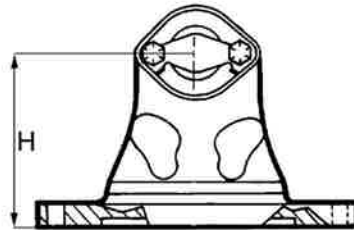


FIG C : FIXATION 2 VIS SPL

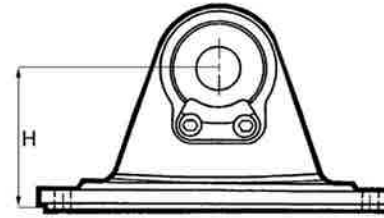


FIG D : FIXATION 3 VIS VOLVO

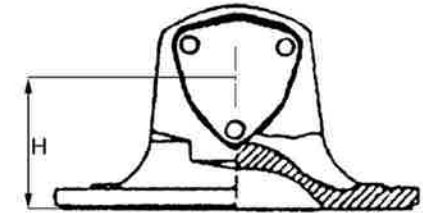


FIG 1 : SAE 4 TROUS

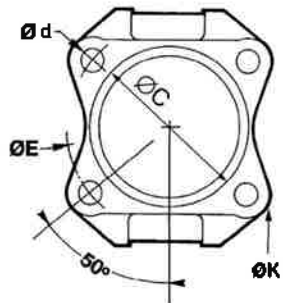


FIG 2 : SAE 6 TROUS
MERCEDES

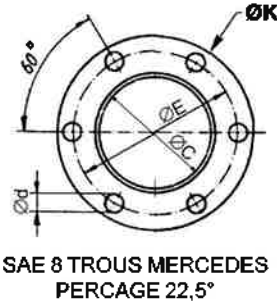


FIG 3 : SAE 8 TROUS

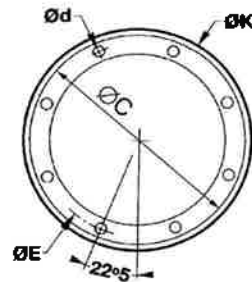


FIG 4 : SAE 12 TROUS

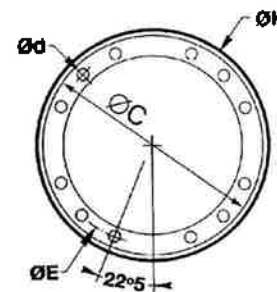


FIG 5 : DIN 4 TROUS

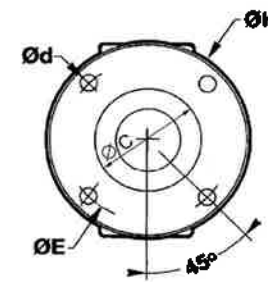


FIG 6 : DIN 6 TROUS

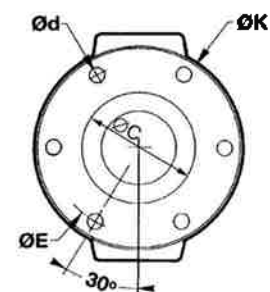


FIG 7 : DIN 8 TROUS

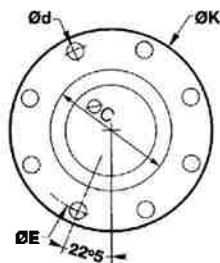


FIG 8 : DIN 10 TROUS

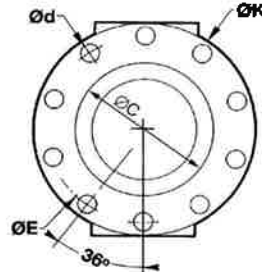


FIG 9 : DIN 10 TROUS
DESAXE

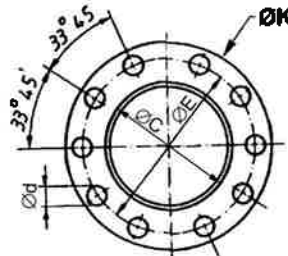


FIG 10 : DENTURE 4
TROUS

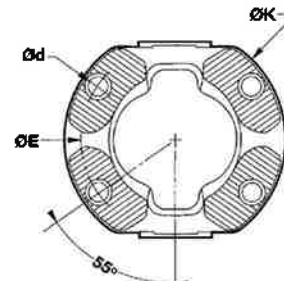


FIG 11 : UNIMOG 4 TROUS

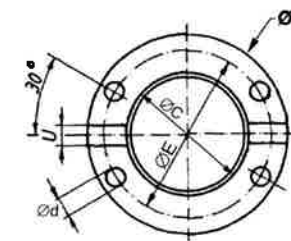
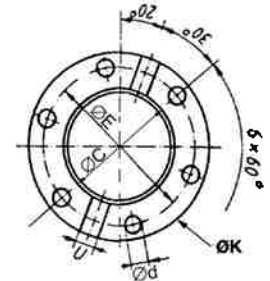


FIG 12 : UNIMOG 6 TROUS

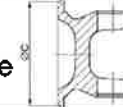


REFERENCE	TYPE	SERIE	BLOC	Ø C	Ø K	Ø E	Nbr trous	Ø d	H	Angle	FIG.	REMARQUE	ORIGINE
110990360	SAE	587-42	57 x 152	196,8	203	184	8	9,7	90		A		
SF652011	SAE	587-42	57 x 152	196,8	203	184	12	11	92	35°	A4		KEMPF
0013103	SAE	587-42	57 x 152	196,8	203	184	12	11	95	35°	A4		EDS
2587422410075	SAE	587-42	57 x 152	196,8	203	184	12	11	100		A4		EDS
SF652013	SAE	587-42	57 x 152	196,8	203	184	12	11	60	8°	A4		KEMPF
110990590	SAE	587-42	57 x 152	198	205	187,5	12	12,1	92		A		
2587422400210	SAE	587-42	57 x 152	203	210	185	10	13,1	95	25°	A		EDS
A11197327	XS	587-42	57 x 152	-	180	150	4	15	60	8°	A10		GEWES
20162016191	XS	620	57 x 152	-	180	150	4	15	92	25°	A10	MAN - DAF équiv. 587 - 42 / 2055	KLEIN
0017016	XS	2055	57 x 152	-	180	150	4	15	92	25°	A10	2055 / 587 - 42	DANA SPICER GWB
0017017	XS	2055	57 x 152	-	180	150	4	15	102	35°	A10	2055 / 587 - 42	DANA SPICER GWB
20165015660	XS	650	57 x 152	-	180	150	4	15	95	35°	A10	EQUIVALENT 587 - 42 / 2055	KLEIN
17858	SAE	NK500/600	57 x 152,5	197	203	184	12	11	80	25°	D4	VOLVO - NK500 et NK600	
0017163	SAE	NK500/600	57 x 152,5	196,8	203	184	8	9	80	25°	D4	VOLVO - NK500 et NK600	
20168015805	DIN	680	57 x 172	110	180	155,5	10	16	110	25°	A8	IVECO	KLEIN
20168016018	XS	680	57 x 172	-	180	150	4	15	100	28°	A10	IVECO	KLEIN
H020133	DIN	906/2060	59 x 167,7	110	180	155,5	10	16	110	25°	A8	EQUIVALENT 2060 / 906	DANA SPICER GWB
0018099	DIN	2060	59 x 167,7	110	180	155,5	10	16,1	110	25°	A8	EQUIVALENT 2060 / 906	DANA SPICER GWB
0018840	SAE	2060	59 x 167,7	196,8	203	184	12	11	86	25°	A4	EQUIVALENT 2060 / 906	DANA SPICER GWB
2502902400100	SAE	2060	59 x 167,7	196,8	250	228,6	12	12	90	25°	A4	SAE1900	EDS
0017929	XS	2060	59 x 167,7	-	180	150	4	15	100	25°	A10	EQUIVALENT 2060 / 906	DANA SPICER GWB

MACHOIRE A BRIDE



SAE
centrage mâle



DIN
centrage femelle

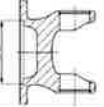


FIG A : FIXATION A CIRCLIPS

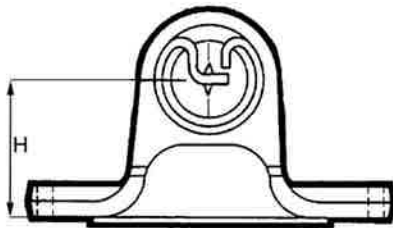


FIG B : FIXATION 2 VIS SPICER

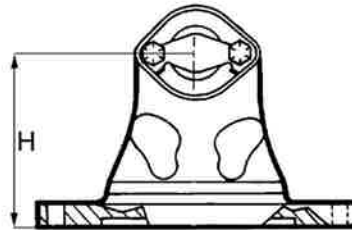


FIG C : FIXATION 2 VIS SPL

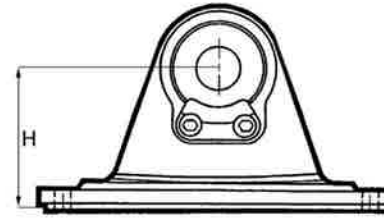


FIG D : FIXATION 3 VIS VOLVO

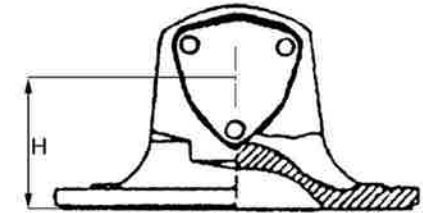


FIG 1 : SAE 4 TROUS

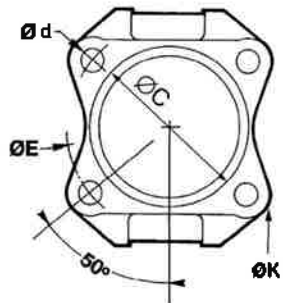


FIG 2 : SAE 6 TROUS
MERCEDES

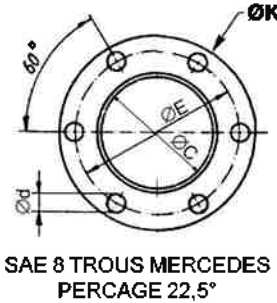


FIG 3 : SAE 8 TROUS

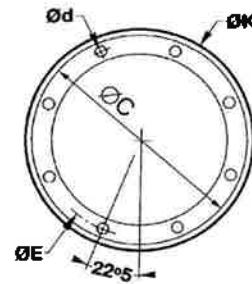


FIG 4 : SAE 12 TROUS

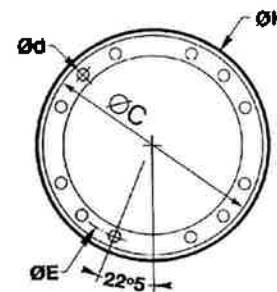


FIG 5 : DIN 4 TROUS

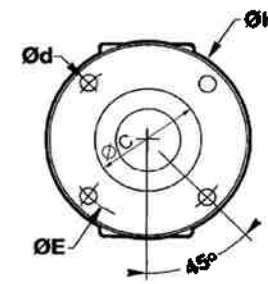


FIG 6 : DIN 6 TROUS

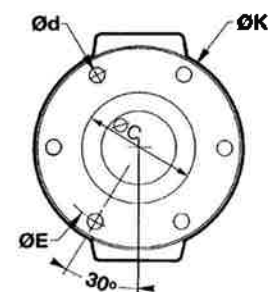


FIG 7 : DIN 8 TROUS

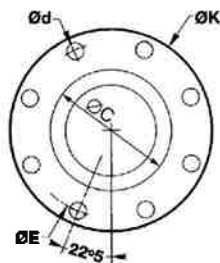


FIG 8 : DIN 10 TROUS

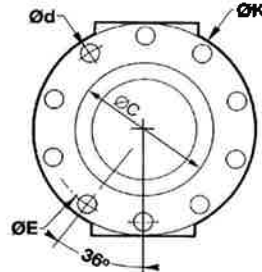


FIG 9 : DIN 10 TROUS
DESAXE

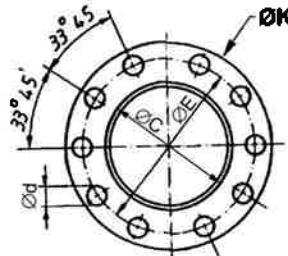


FIG 10 : DENTURE 4
TROUS

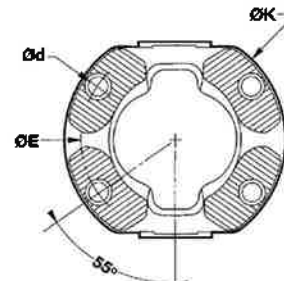


FIG 11 : UNIMOG 4 TROUS

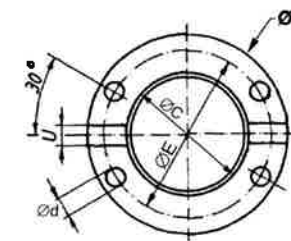
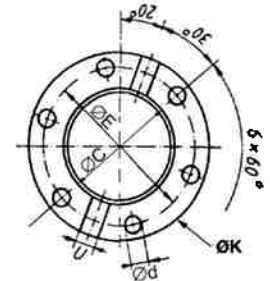


FIG 12 : UNIMOG 6 TROUS

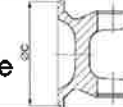


REFERENCE	TYPE	SERIE	BLOC	Ø C	Ø K	Ø E	Nbr trous	Ø d	H	Angle	FIG.	REMARQUE	ORIGINE
250219	SAE	SPL 250	60 x 162,8	197	203	184	12	11,1	89	25°	C4		DANA SPICER
250215	XS	SPL 250	60 x 162,8	-	180	150	4	15	91	25°	C10		DANA SPICER
2587482700030	DIN	700	65 x 172	110	180	155,5	8	14	110	30°	A7	EQUIVALENT GWB 587 - 48	
20170015360	DIN	700	65 x 172	110	180	155,5	10	16	110	30°	A8	EQUIVALENT GWB 587 - 48	KLEIN
20170015370	DIN	700	65 x 172	110	180	155,5	10	16	110	30°	A9	Equiv. GWB 587-48 trous désaxés	KLEIN
MAB58748CF120	DIN	58748	65 x 172	120	180	155,5	12	18	110	30°	A		
20170015718	DIN	700	65 x 172	110	180	-	-	-	110	25°	A	GWB 587 - 48 NON PERCEE	KLEIN
20171015564	DIN	700	65 x 172	140	225	196	8	16,1	110	30°	A7	EQUIVALENT GWB 587 - 48	KLEIN
10001100010	DIN	587-48	65 x 172	140	225	196	8	16,1	105	24°	A7	EQUIVALENT GWB 587 - 48	KEMPF
1122304001	DIN	587-48	65 x 172	140	225	196	8	16,1	100	24°	A7	EQUIVALENT GWB 587 - 48	ELBE
1122301003	DIN	587-48	65 x 172	140	225	196	12	16,1	100	30°	A	EQUIVALENT GWB 587 - 48	ELBE
206502225108	DIN	2065	65 x 172	140	225	170	10	18,1	110	25°	A7	ZF	
10161100010	DIN	587-48	65 x 172	140	250	218	8	18,1	105	24°	A7	EQUIVALENT GWB 587 - 48	KEMPF
3587482800120	DIN	587-48	65 x 172	140	250				110		A	GWB 587 - 48 NON PERCEE	EDS
2587482800150	DIN	587-48	65 x 172	190	250		8	18,1	110	25°	A7		EDS
20170515458	SAE	700	65 x 172	196,8	203	184	12	11	110	25°	A4	EQUIVALENT GWB 587 - 48	KLEIN
2587482400190	SAE	587-48	65 x 172	177,7	244	209,4	8	16,1	110	25°	A	SAE1880	EDS
10561100016	SAE	587-48	65 x 172	196,8	250	228,6	12	12	105	25°	A4	SAE1900	EDS
2587482400170	SAE	587-48	65 x 172	222,25	276	247,6	8	16	111	25°	A	SAE1950	EDS
20170015641	XS	700	65 x 172	-	180	150	4	15	100	28°	A10	EQUIVALENT GWB 587 - 48	KLEIN
0017564	XS	2065	65 x 172	-	180	150	4	15	75	10°	A10	EQUIVALENT GWB 587 - 48	DANA SPICER GWB

MACHOIRE A BRIDE



SAE
centrage mâle



DIN
centrage femelle

FIG A : FIXATION A CIRCLIPS

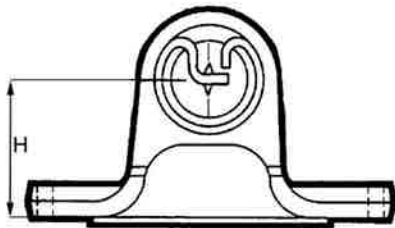


FIG B : FIXATION 2 VIS SPICER

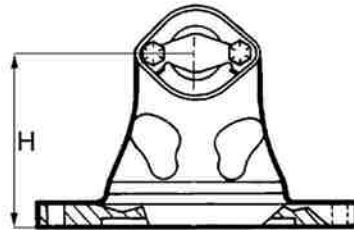


FIG C : FIXATION 2 VIS SPL

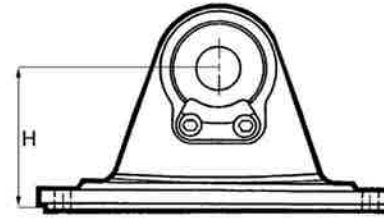


FIG D : FIXATION 3 VIS VOLVO

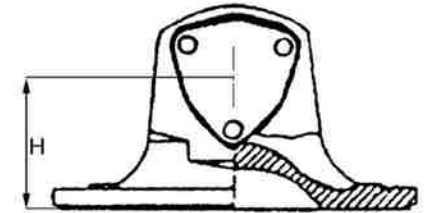


FIG 1 : SAE 4 TROUS

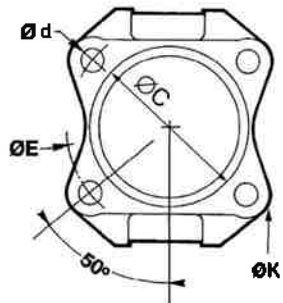


FIG 2 : SAE 6 TROUS
MERCEDES

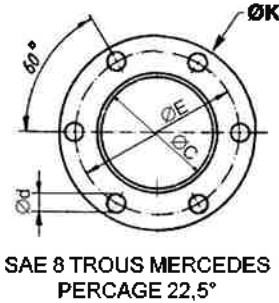


FIG 3 : SAE 8 TROUS



FIG 4 : SAE 12 TROUS

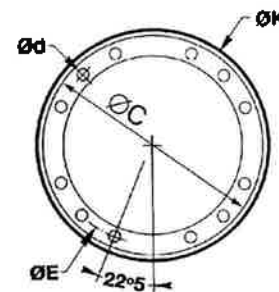


FIG 5 : DIN 4 TROUS

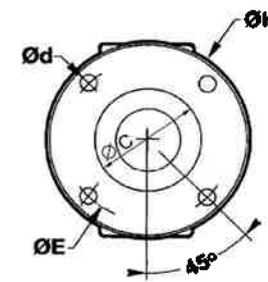


FIG 6 : DIN 6 TROUS

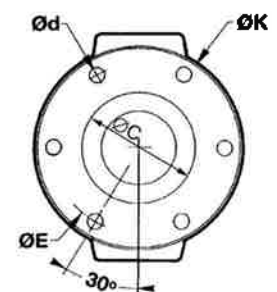


FIG 7 : DIN 8 TROUS

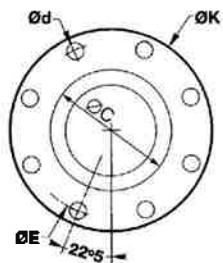


FIG 8 : DIN 10 TROUS

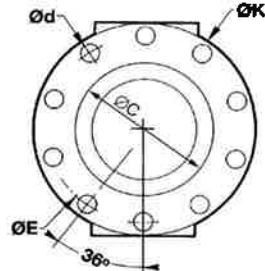


FIG 9 : DIN 10 TROUS
DESAXE

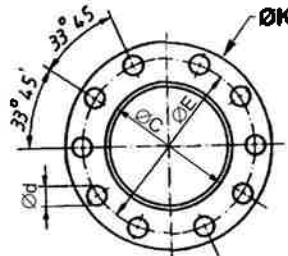


FIG 10 : DENTURE 4
TROUS

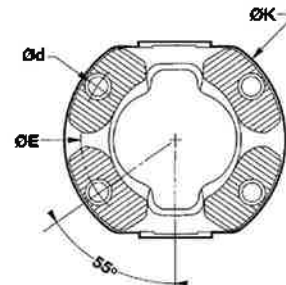


FIG 11 : UNIMOG 4 TROUS

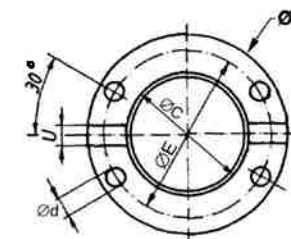
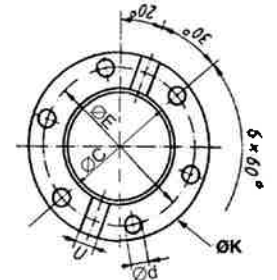


FIG 12 : UNIMOG 6 TROUS

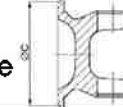


REFERENCE	TYPE	SERIE	BLOC	Ø C	Ø K	Ø E	Nbr trous	Ø d	H	Angle	FIG.	REMARQUE	ORIGINE
0017930	XS	2065	65 x 172	-	180	150	4	15	105	25°	A10	EQUIVALENT GWB 587 - 48	DANA SPICER GWB
2888602000500	XS	P600	65 x 190	-	208		4	15	100	25°	10		
12801098010	XS	385-60	68 x 89IC	-	180	150	4	15	100	22°	A10	MERCEDES	KEMPF
0018960	XS	802-79	68 x 117IC	-	200	165	4	15	113	22°	A10	MERCEDES	
10161102010	DIN	802-79	68 x 117IC	175	285	245	8	20	120	20°	A7		EDS
0010786	DIN	587-50	72 x 185	140	225	196	8	16	108	24°	A7		DANA SPICER GWB
2587502000060	DIN	587-50	72 x 185	140	225	196	12	16	108	24°	A		
2587502300320	DIN	587-50	72 x 185	140	250	218	8	18	108	24°	A7	0016721	EDS
2587502300140	SAE	587-50	72 x 185	175	285	245	8	20	108	24°	A7		EDS
2587502400090	SAE	587-50	72 x 185	196,8	203	184		11			A4		EDS
2587502400060	SAE	587-50	72 x 185	196,8	250	228,6	12	12	108	24°	A4	SAE1900	EDS
2587502400150	SAE	587-50	72 x 185	222,25	276	247,6	8	15,9	108	24°	A	SAE1950	EDS
2587502000580	XS	587-50	72 x 185	-	200	165	4	15	108	24°	A10		EDS
MAB29250DIN	DIN	392-50	74x129/222	140	250	218	8	18	135		7	Fixation entre pontet type GWB - Avec pontet et vis	EDS
2190552000000	DIN	190-55	74x154/244	140	250	218	8	18	130	15°	7	Fixation entre pontet type GWB - Avec pontet et vis	EDS
10001105011	DIN	105	74 x 195	140	225	196	8	16,1	125	18°	A7		EDS
10161105011	DIN	105	74 x 195	140	250	218	8	18	125	18°	A7		KEMPF
2587552000000	DIN	587-55	74 x 217	140	250	218	8	18	125		A7		
2587552300100	DIN	587-55	74 x 217	175	285	245	8	20	125	20°	A7		EDS
30021003002	DIN	292-55	83x139/246	105	250	218	8	19,1	145	15°		Fixation pontet et vis type GWB - Clavette frontale 40	EDS
2190602000100	DIN	190-60	83x175/280	175	285	245	8	20	135			Fixation entre pontet type GWB - Avec pontet et vis	EDS

MACHOIRE A BRIDE



SAE
centrage mâle



DIN
centrage femelle

FIG A : FIXATION A CIRCLIPS

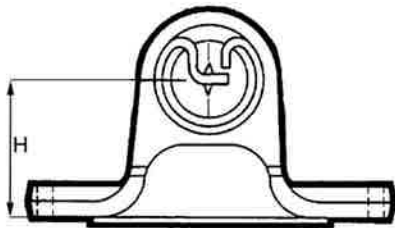


FIG B : FIXATION 2 VIS SPICER

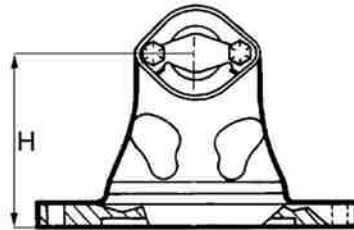


FIG C : FIXATION 2 VIS SPL

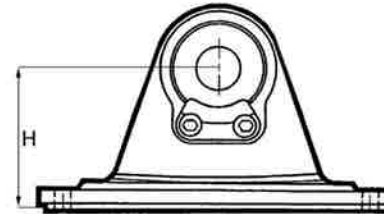


FIG D : FIXATION 3 VIS VOLVO

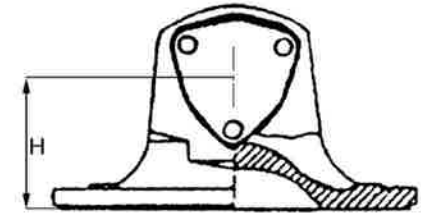


FIG 1 : SAE 4 TROUS

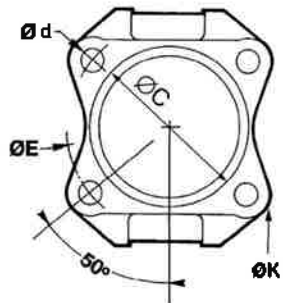


FIG 2 : SAE 6 TROUS
MERCEDES

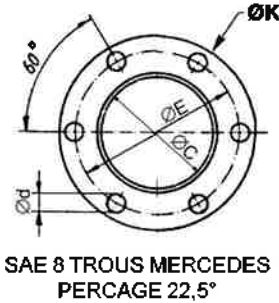


FIG 3 : SAE 8 TROUS

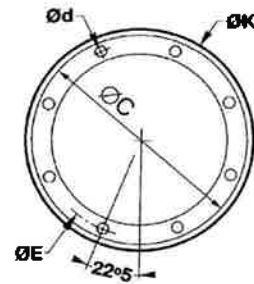


FIG 4 : SAE 12 TROUS

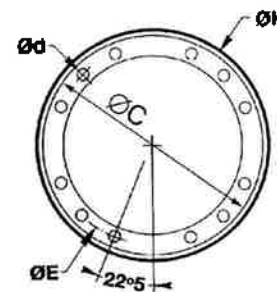


FIG 5 : DIN 4 TROUS

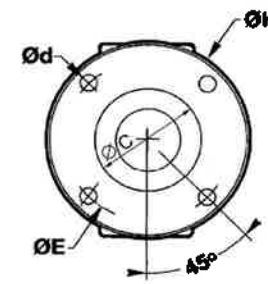


FIG 6 : DIN 6 TROUS

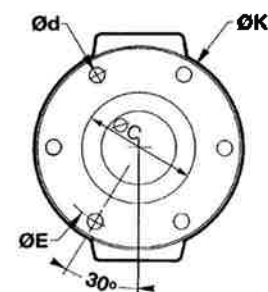


FIG 7 : DIN 8 TROUS

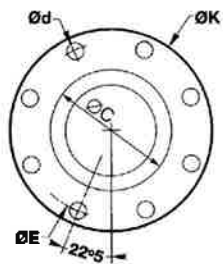


FIG 8 : DIN 10 TROUS

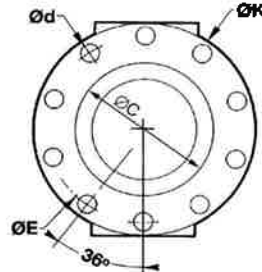


FIG 9 : DIN 10 TROUS
DESAXE

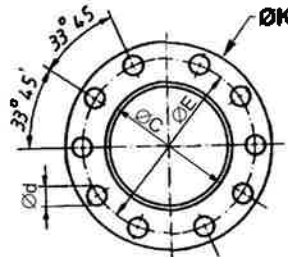


FIG 10 : DENTURE 4
TROUS

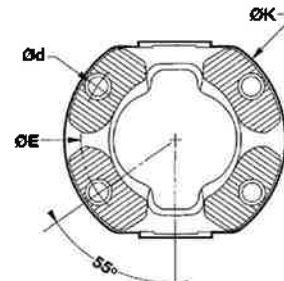


FIG 11 : UNIMOG 4 TROUS

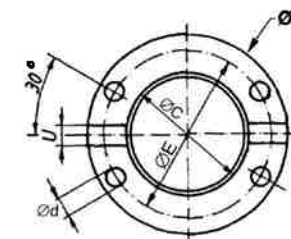
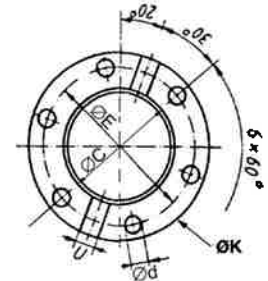


FIG 12 : UNIMOG 6 TROUS



REFERENCE	TYPE	SERIE	BLOC	Ø C	Ø K	Ø E	Nbr trous	Ø d	H	Angle	FIG.	REMARQUE	ORIGINE
10391115010	DIN	115	83 x 220	105	250	218	8	19	130	15°	A7	Bride avec clavette de 40 (livré sans clavette)	KEMPF
258760200000	DIN	587-60	83 x 231,4	175	285	245	8	20	135		A7		EDS
20041000001	DIN	190-65	95 x 190/308	175	315	280	8	22,1	150		7		EDS
10191124010	DIN	124/125	95 x 250	175	285	245	8	20	140	24°	A7		KEMPF
11381125010	DIN	124/125	95 x 250	125	285	245	8	21	180	15°	A7	Bride avec clavette de 40 (livré sans clavette)	KEMPF
Clavette de 40 Réf : 11381125440													KEMPF
10351124010	DIN	124/125	95 x 250	130	315	280	10	23	150	24°	A10	2 x M22 + clavette 40 (livré sans clavette)	KEMPF
10001124010	DIN	124/125	95 x 250	175	315	280	8	22	140	24°	A7		KEMPF
11491127010	DIN	124/125	95 x 250		285	245	4	21	150		A	DENTURE HIRTH Z60	
MAB39265	DIN	392-65	110x176/309	130	315	280	10	23	205	15°		2 x M22 + clavette 40 (livré sans clavette)	EDS
2190702300100	DIN	190-70	110x210/340	250	390	345	10	24,1	210	15°	8	Fixation pontet et vis type GWB	EDS
10391125010	DIN	135	110 x 275	130	315	280	10	23	180			Bride avec clavette de 40 (livré sans clavette)	KEMPF
10161135010	DIN	135	110 x 275	220	350	310	10	22	180	15°	A8		KEMPF
30051003002	DIN	392-70	120x196/343	155	350	310	10	23,1	185	15°		clavette 50 (livré sans clavette)	EDS

